

HANNAY & ASSOCIATES, ARCHITECTS
 1726 South Hillside, Wichita, Kansas, 67211
 Phone (316) 683-8985
 Fax (316) 684-1441

2018
 GENESIS HEALTH CLUBS
 OVERLAND PARK
 6700 W 110 Street, 66211

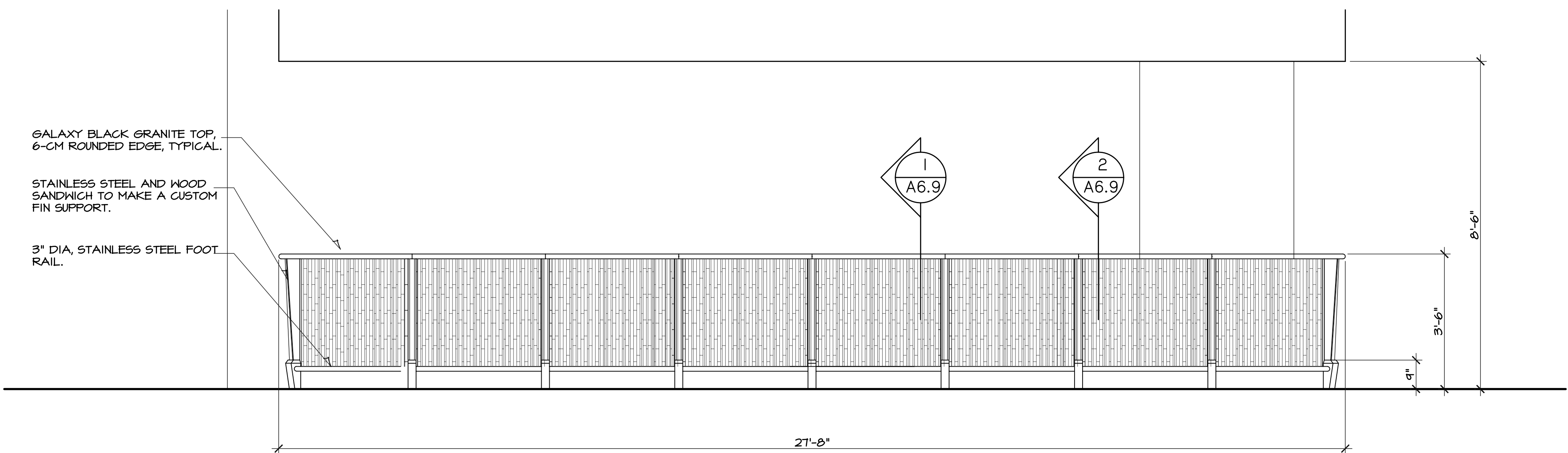


DRAWINGS ISSUED			
NO.	DATE	ITEM	ISSUED
18	6/07/18	ADDENDUM #3	
17	2/12/18	PERMIT	
16	2/09/18	CHECK SET	
15	2/02/18	CHECK SET	
14	01/15/18	CHECK SET	
13	01/08/18	CHECK SET	

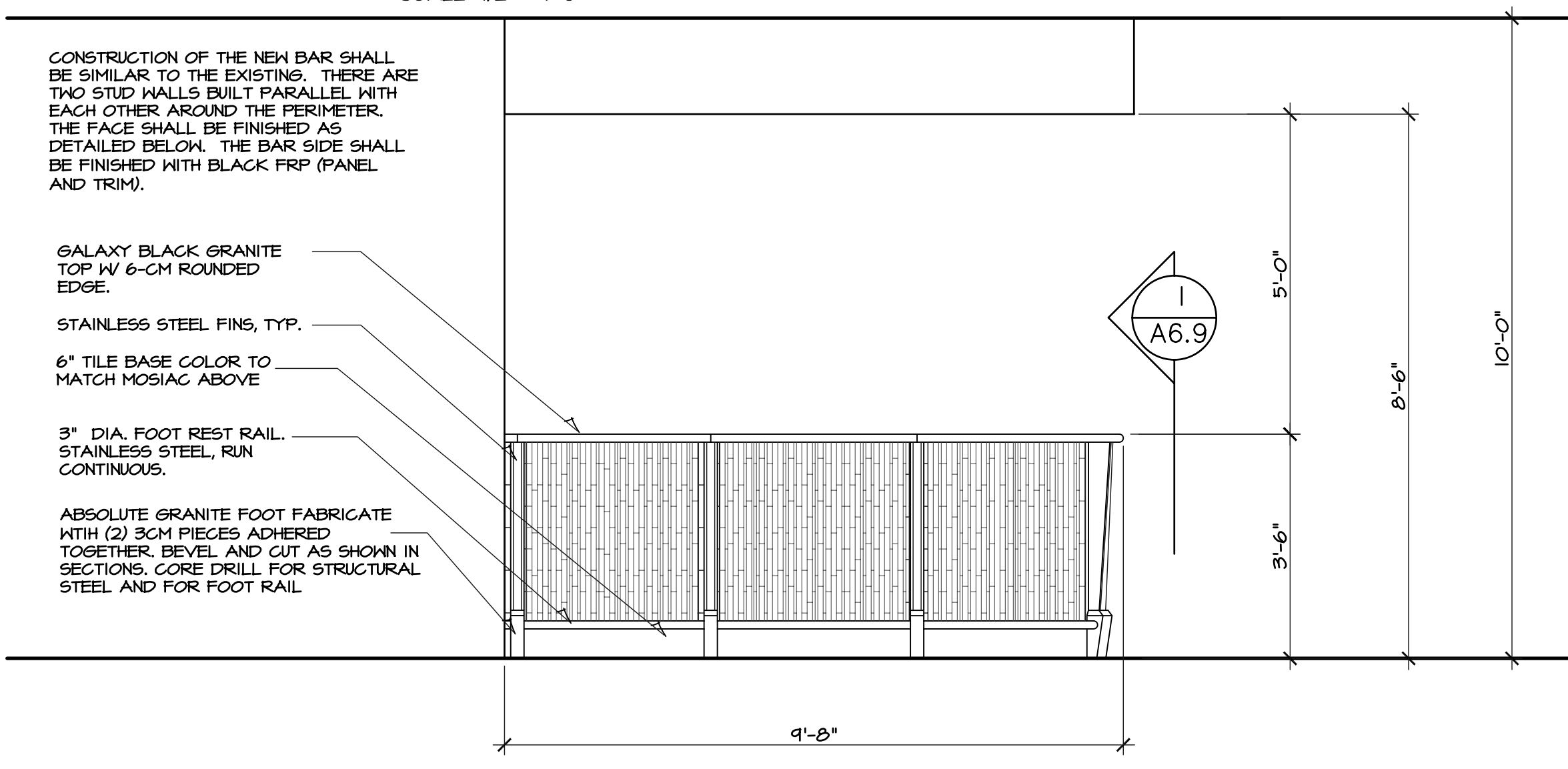
COMPUTER DRAWING
 OP_A101.DWG

DATE: FEBRUARY 2018
 DRAWN BY: CHECKED BY:
 MH, CH, BS, TH MRH

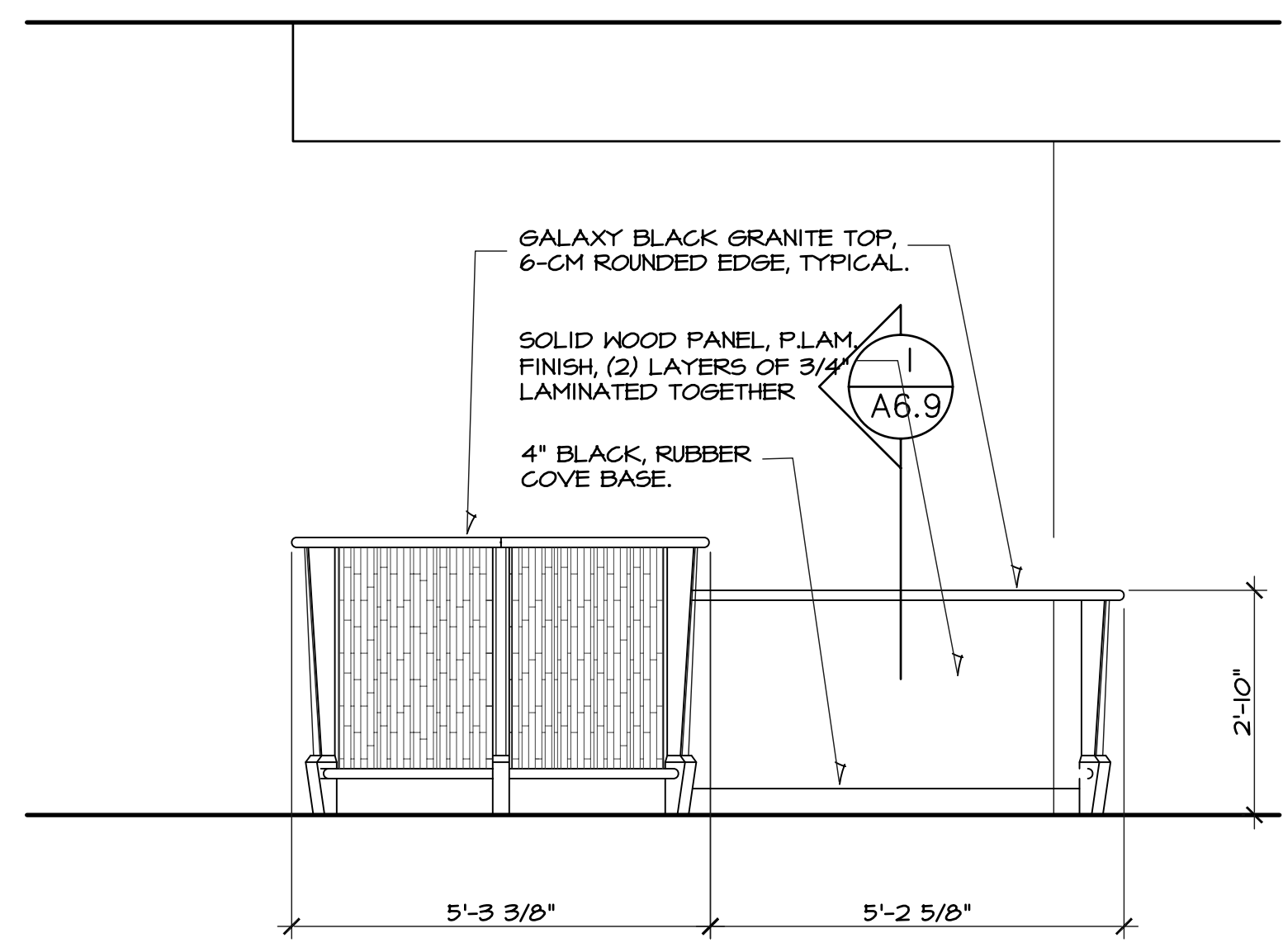
SHEET
A6.9
 OF SHEETS



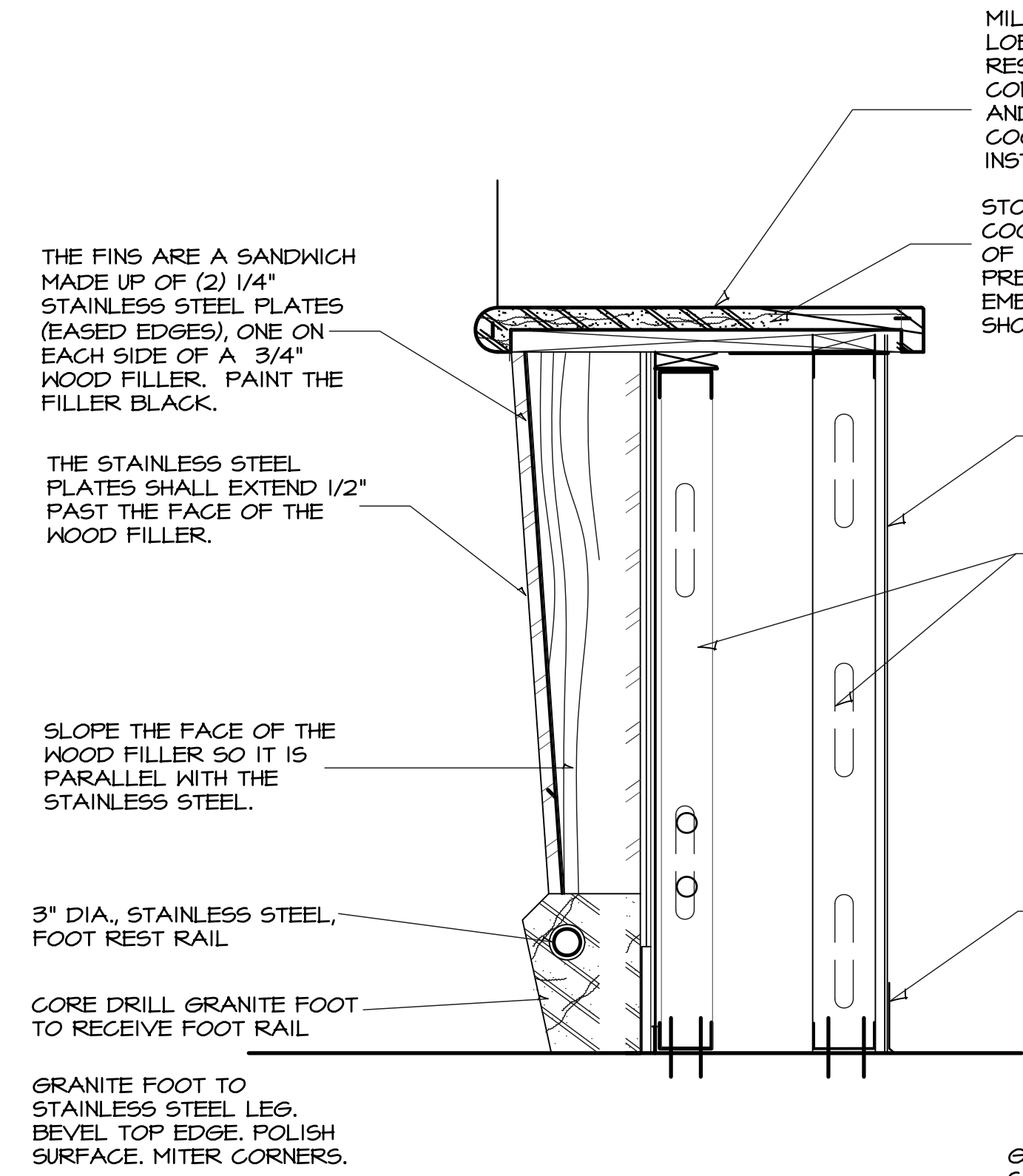
A WEST BAR ELEVATION
 SCALE: 1/2" = 1'-0"



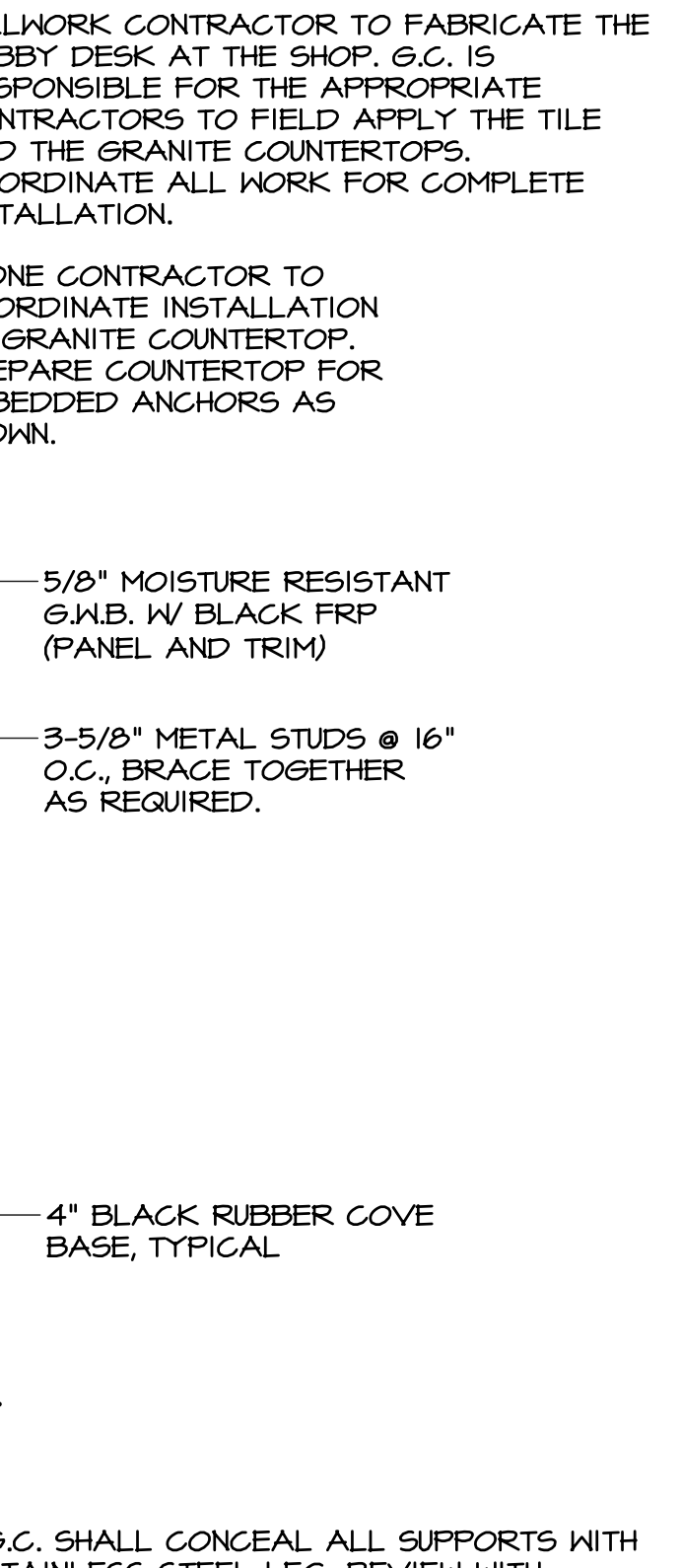
B SOUTH BAR ELEVATION
 SCALE: 1/2" = 1'-0"



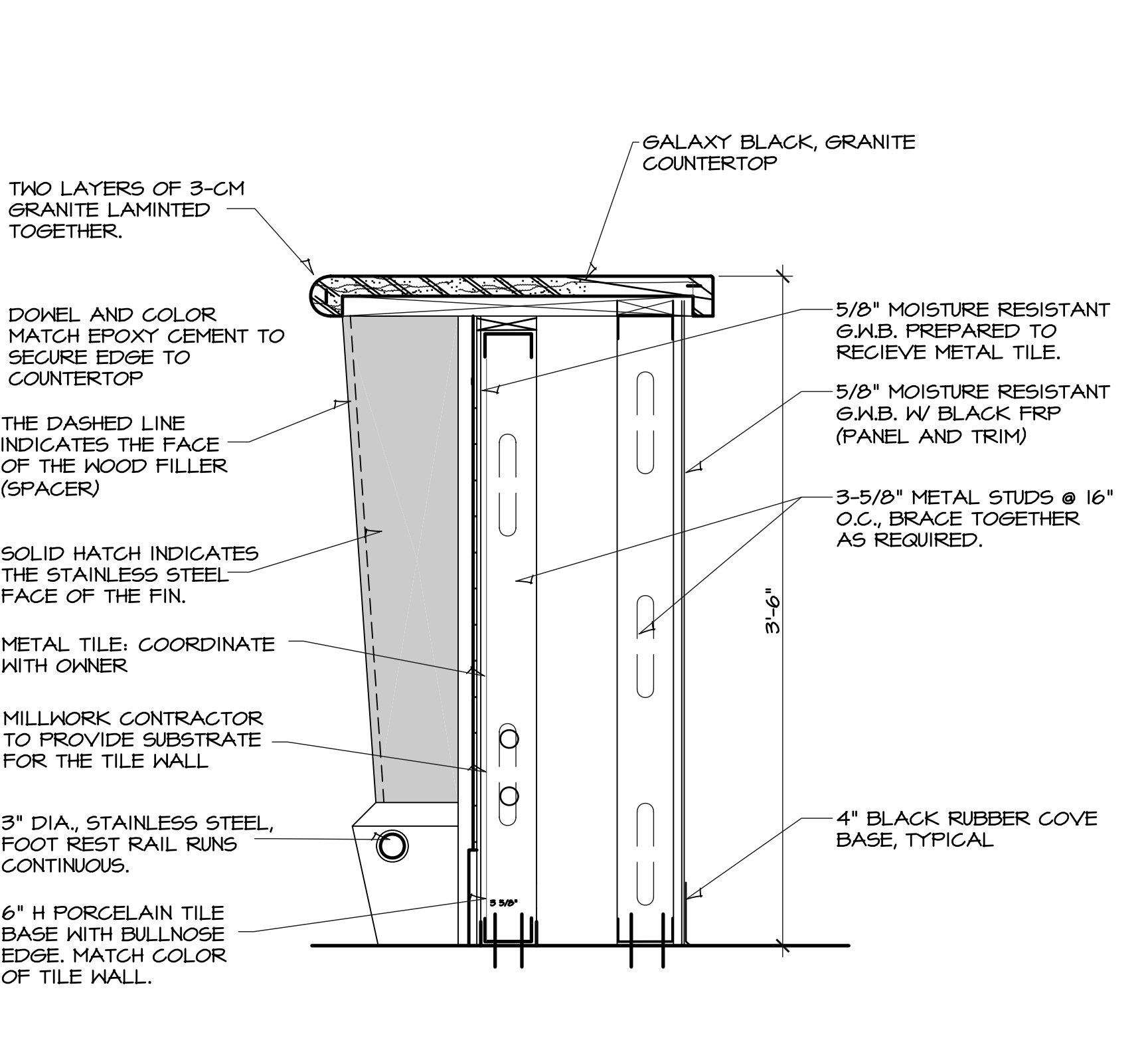
C NORTH BAR ELEVATION
 SCALE: 1/2" = 1'-0"



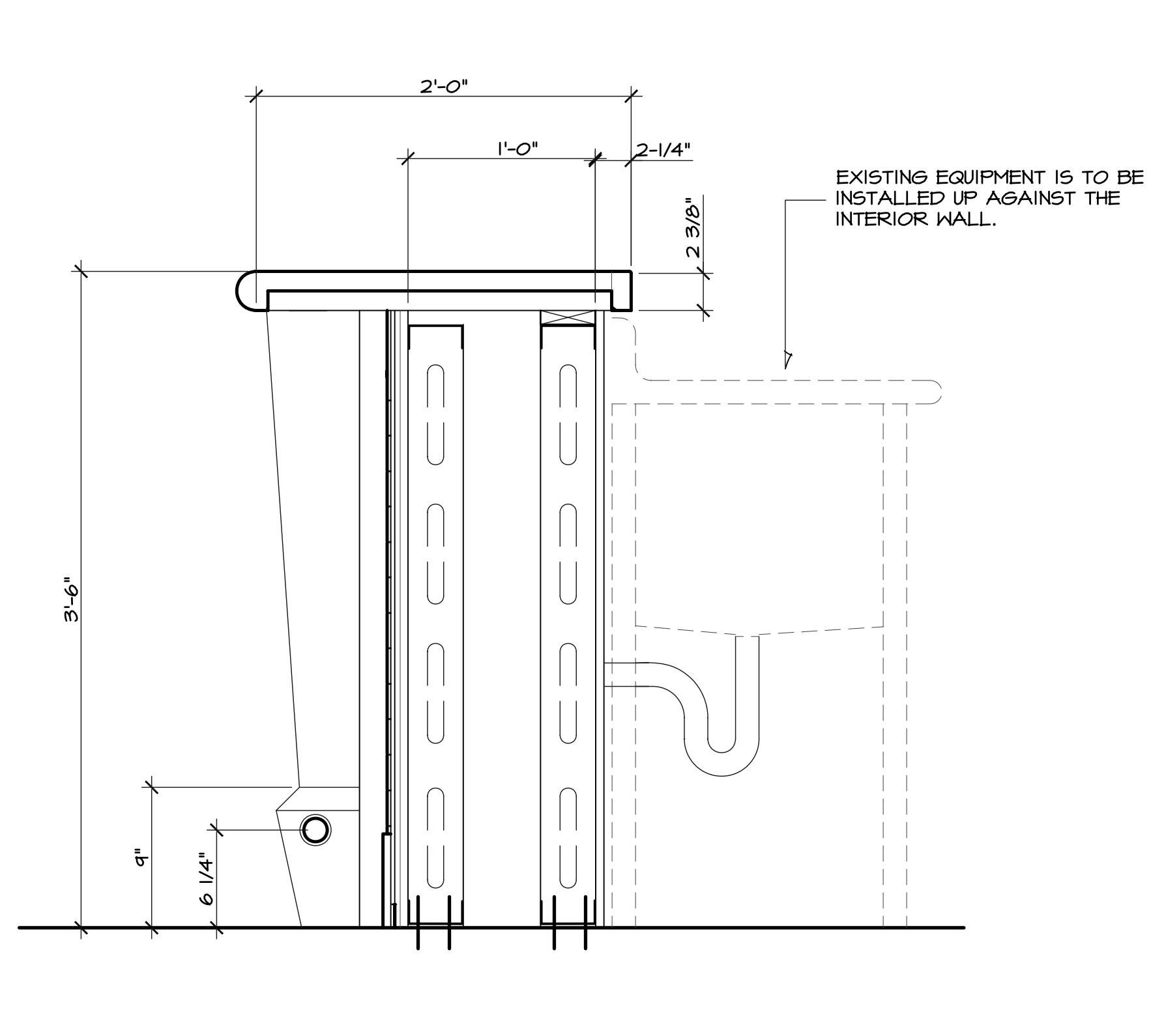
1 FIN SECTION
 SCALE 1-1/2" = 1'-0"



2 SECTION
 SCALE 1-1/2" = 1'-0"



3 SECTION
 SCALE 1-1/2" = 1'-0"



THE FIN IS A SANDWICH MADE UP OF (2) 1/4" STAINLESS STEEL PLATES (EASED EDGES), ONE ON EACH SIDE OF A 3/4" WOOD FILLER. PAINT THE FILLER BLACK.

THE STAINLESS STEEL PLATES SHALL EXTEND 1/2" PAST THE FACE OF THE WOOD FILLER.

SLOPE THE FACE OF THE WOOD FILLER SO IT IS PARALLEL WITH THE STAINLESS STEEL.

3" DIA., STAINLESS STEEL, FOOT REST RAIL

CORE DRILL GRANITE FOOT TO RECEIVE FOOT RAIL

GRANITE FOOT TO STAINLESS STEEL LEG. BEVEL TOP EDGE. POLISH SURFACE. MITER CORNERS.

MILLWORK CONTRACTOR TO FABRICATE THE LOBBY DESK AT THE SHOP. G.C. IS RESPONSIBLE FOR THE APPROPRIATE CONTRACTORS TO FIELD APPLY THE TILE AND THE GRANITE COUNTERTOPS. COORDINATE ALL WORK FOR COMPLETE INSTALLATION.

STONE CONTRACTOR TO COORDINATE INSTALLATION OF GRANITE COUNTERTOP. PREPARE COUNTERTOP FOR EMBEDDED ANCHORS AS SHOWN.

5/8" MOISTURE RESISTANT G.W.B. W/ BLACK FRP (PANEL AND TRIM)

3-5/8" METAL STUDS @ 16" O.C., BRACE TOGETHER AS REQUIRED.

4" BLACK RUBBER COVE BASE, TYPICAL

G.C. SHALL CONCEAL ALL SUPPORTS WITH STAINLESS STEEL LEG. REVIEW WITH ARCHITECT PRIOR TO CONSTRUCTION TO REVIEW EXISTING FLOOR CONDITIONS.

MILLWORK CONTRACTOR AND ELECTRICAL CONTRACTOR SHALL COORDINATE INSTALLATION OF CONDUIT.

TWO LAYERS OF 3-CM GRANITE LAMINATED TOGETHER.

DOWEL AND COLOR MATCH EPOXY CEMENT TO SECURE EDGE TO COUNTERTOP

THE DASHED LINE INDICATES THE FACE OF THE WOOD FILLER (SPACER)

SOLID HATCH INDICATES THE STAINLESS STEEL FACE OF THE FIN.

METAL TILE: COORDINATE WITH OWNER

MILLWORK CONTRACTOR TO PROVIDE SUBSTRATE FOR THE TILE WALL

3" DIA., STAINLESS STEEL, FOOT REST RAIL RUNS CONTINUOUS.

6" H PORCELAIN TILE BASE WITH BULLNOSE EDGE. MATCH COLOR OF TILE WALL.

GALAXY BLACK, GRANITE COUNTERTOP

5/8" MOISTURE RESISTANT G.W.B. PREPARED TO RECEIVE METAL TILE.

5/8" MOISTURE RESISTANT G.W.B. W/ BLACK FRP (PANEL AND TRIM)

3-5/8" METAL STUDS @ 16" O.C., BRACE TOGETHER AS REQUIRED.

4" BLACK RUBBER COVE BASE, TYPICAL

EXISTING EQUIPMENT IS TO BE INSTALLED UP AGAINST THE INTERIOR WALL.