



HANNEY & ASSOCIATES, ARCHITECTS
 1726 South Hillside, Wichita, Kansas 67211
 Phone (316) 683-6955
 Fax (316) 684-1441

2018 GENESIS HEALTH CLUBS OVERLAND PARK
 6700 W 110 Street, 66211

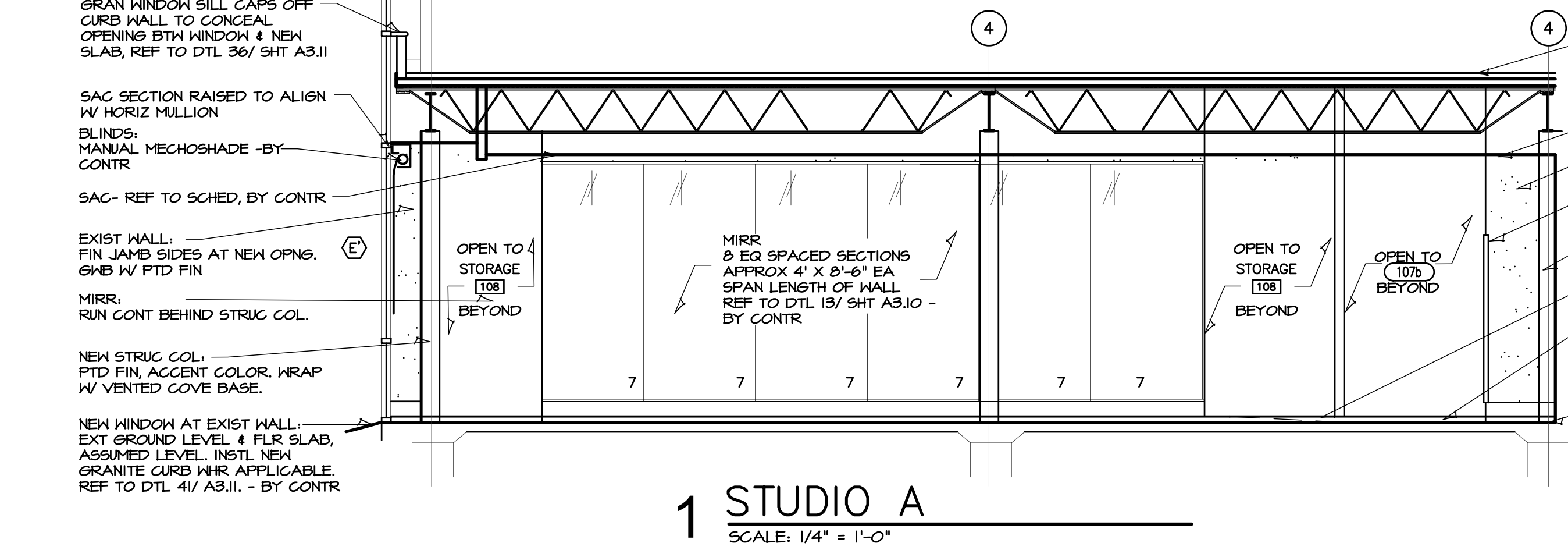


| DRAWINGS ISSUED | | | |
|-----------------|----------|-------------|--------|
| NO. | DATE | ITEM | ISSUED |
| 18 | 6/07/18 | ADDENDUM #3 | |
| 17 | 2/12/18 | PERMIT | |
| 16 | 2/09/18 | CHECK SET | |
| 15 | 2/02/18 | CHECK SET | |
| 14 | 01/15/18 | CHECK SET | |
| 13 | 01/09/18 | CHECK SET | |

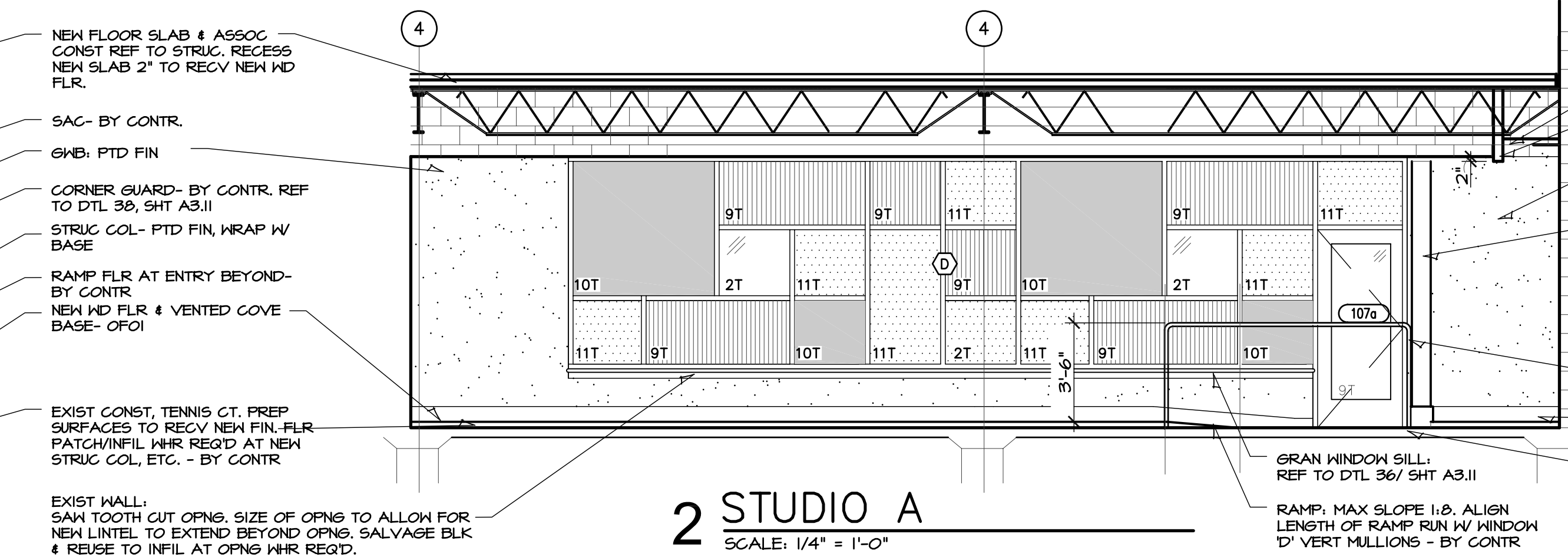
COMPUTER DRAWING
 OP_A101.DWG

DATE: FEBRUARY 2018
 DRAWN BY: CHECKED BY:
 MH, CH, BS, TH MRH

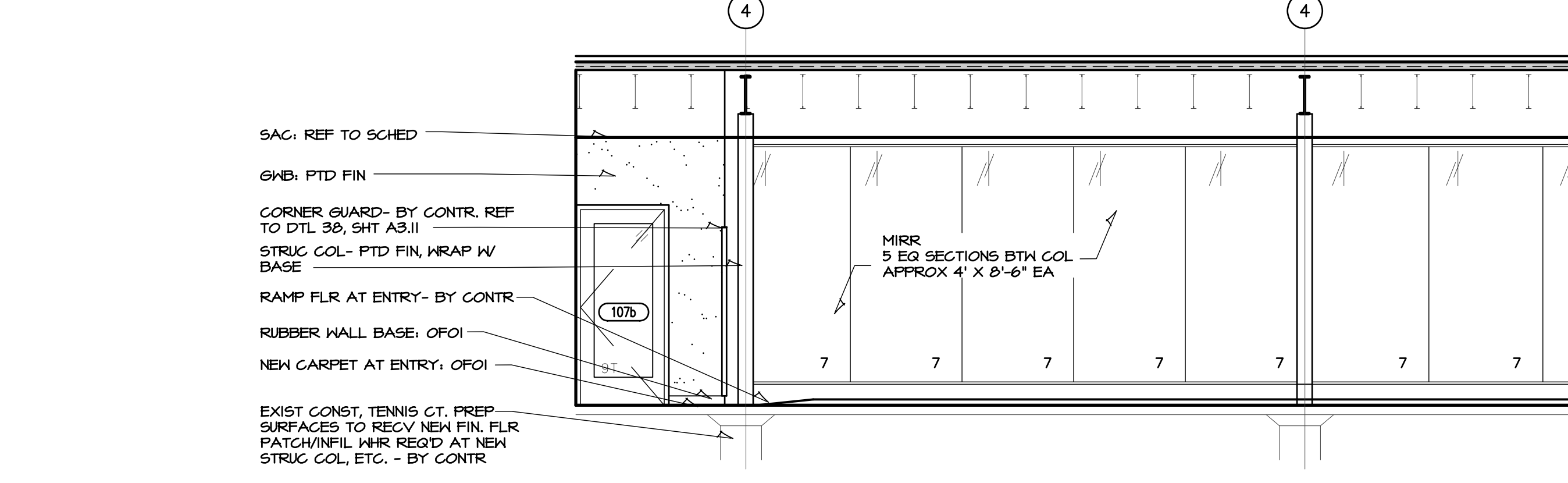
SHEET
A6.13
 OF SHEETS



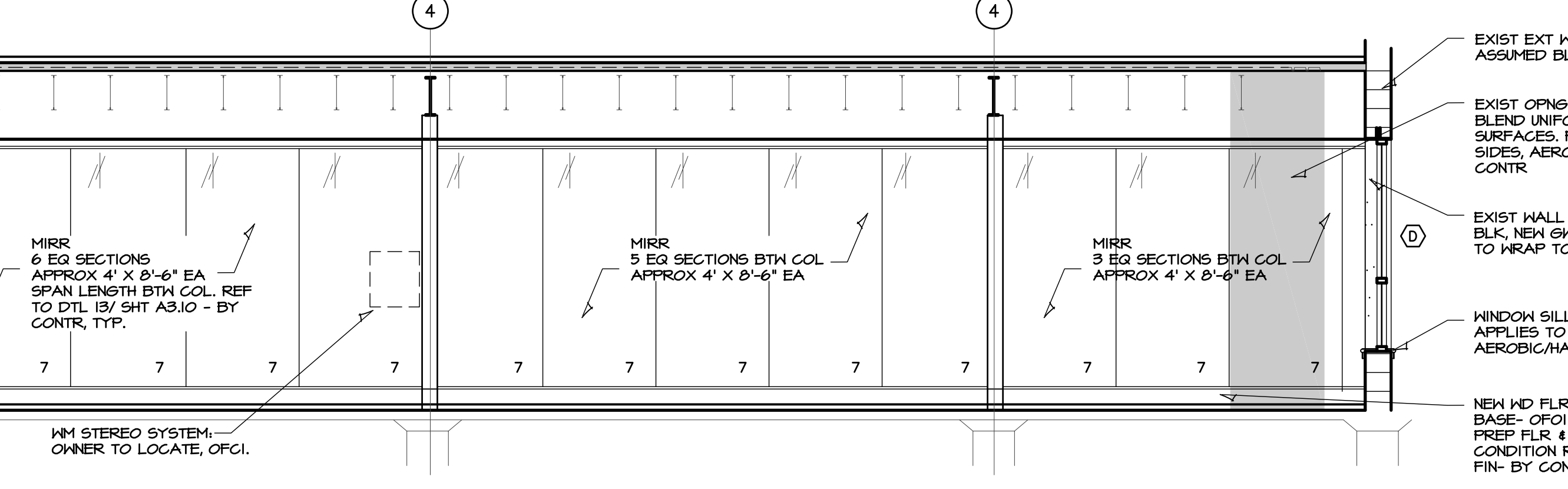
1 STUDIO A
 SCALE: 1/4" = 1'-0"



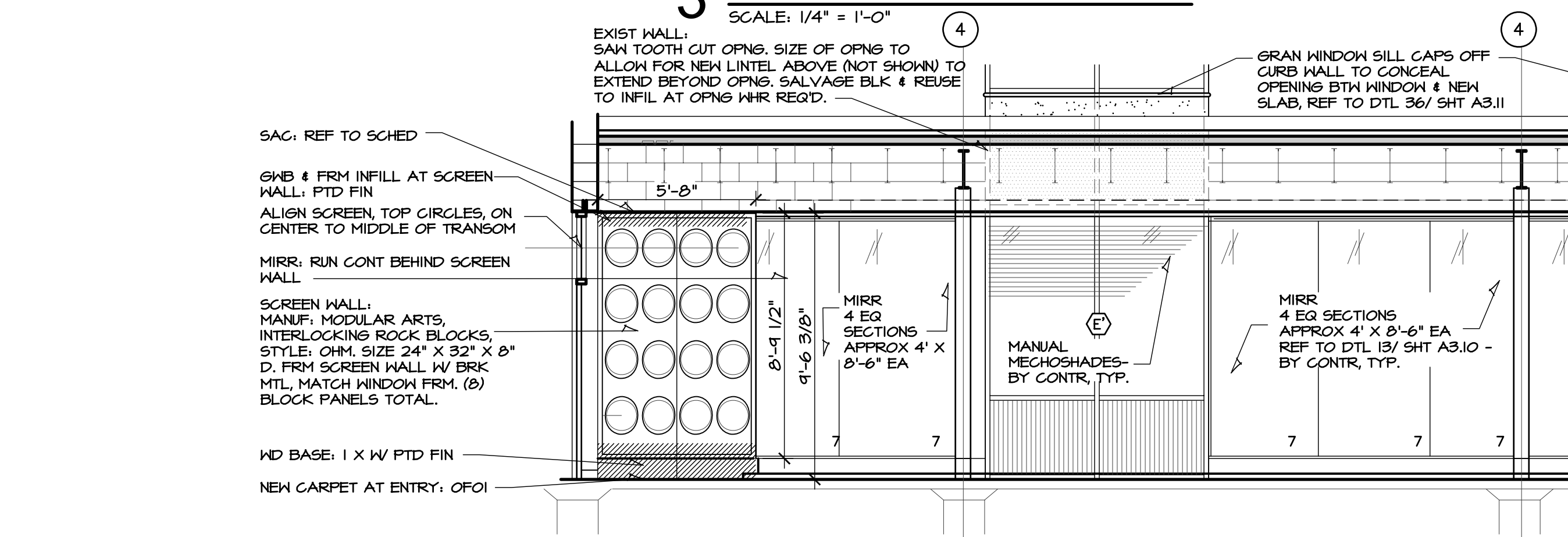
2 STUDIO A
 SCALE: 1/4" = 1'-0"



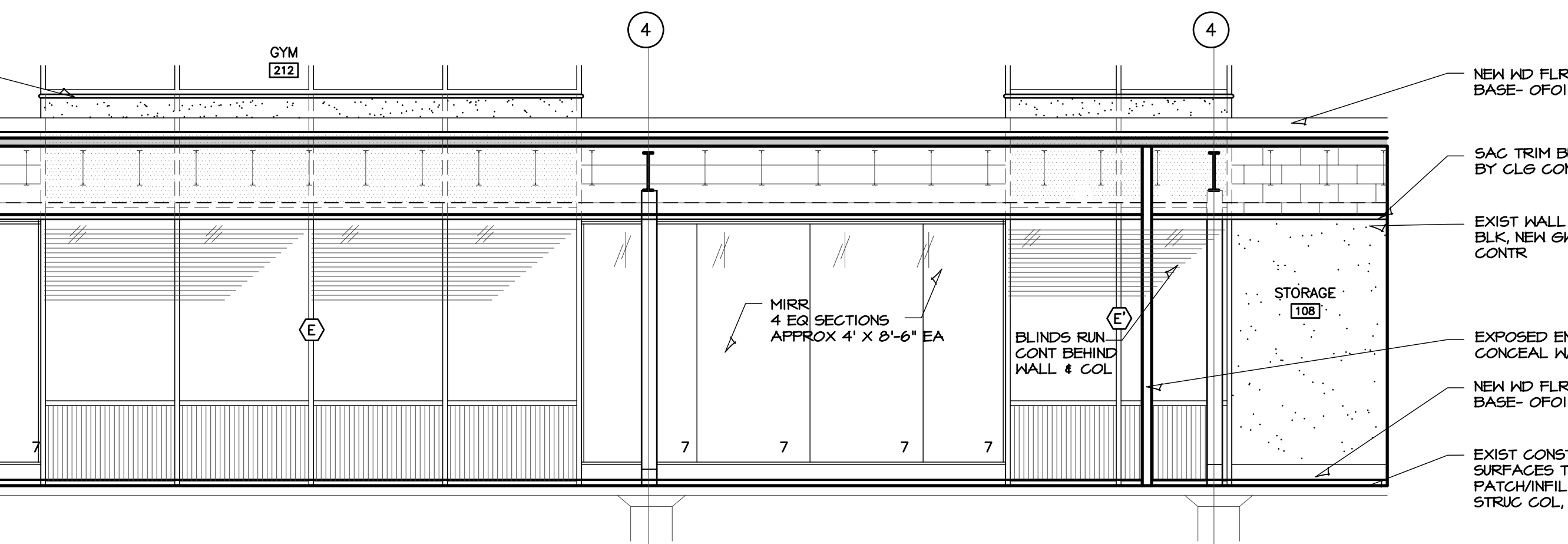
3 STUDIO A
 SCALE: 1/4" = 1'-0"



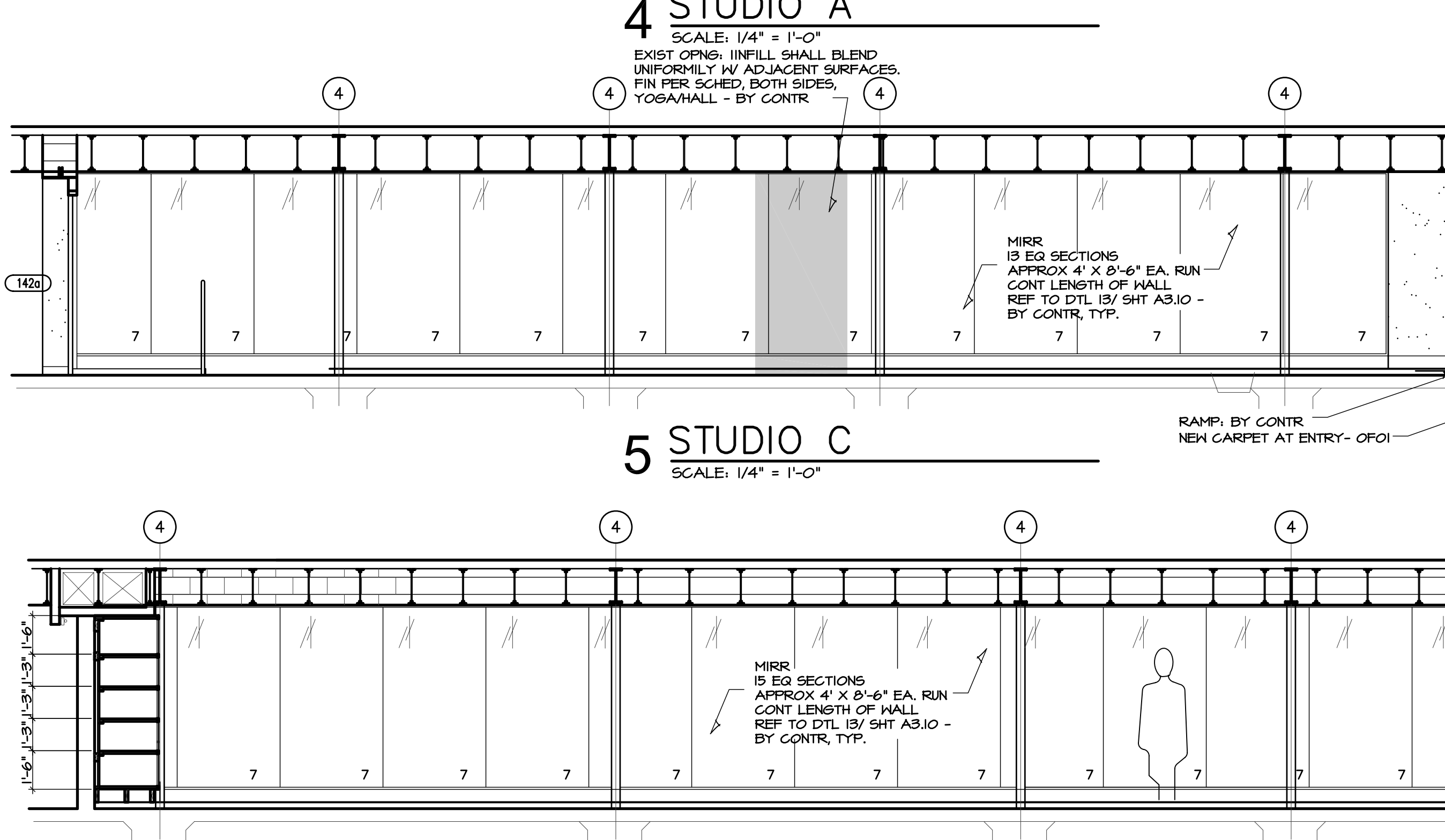
4 STUDIO A
 SCALE: 1/4" = 1'-0"



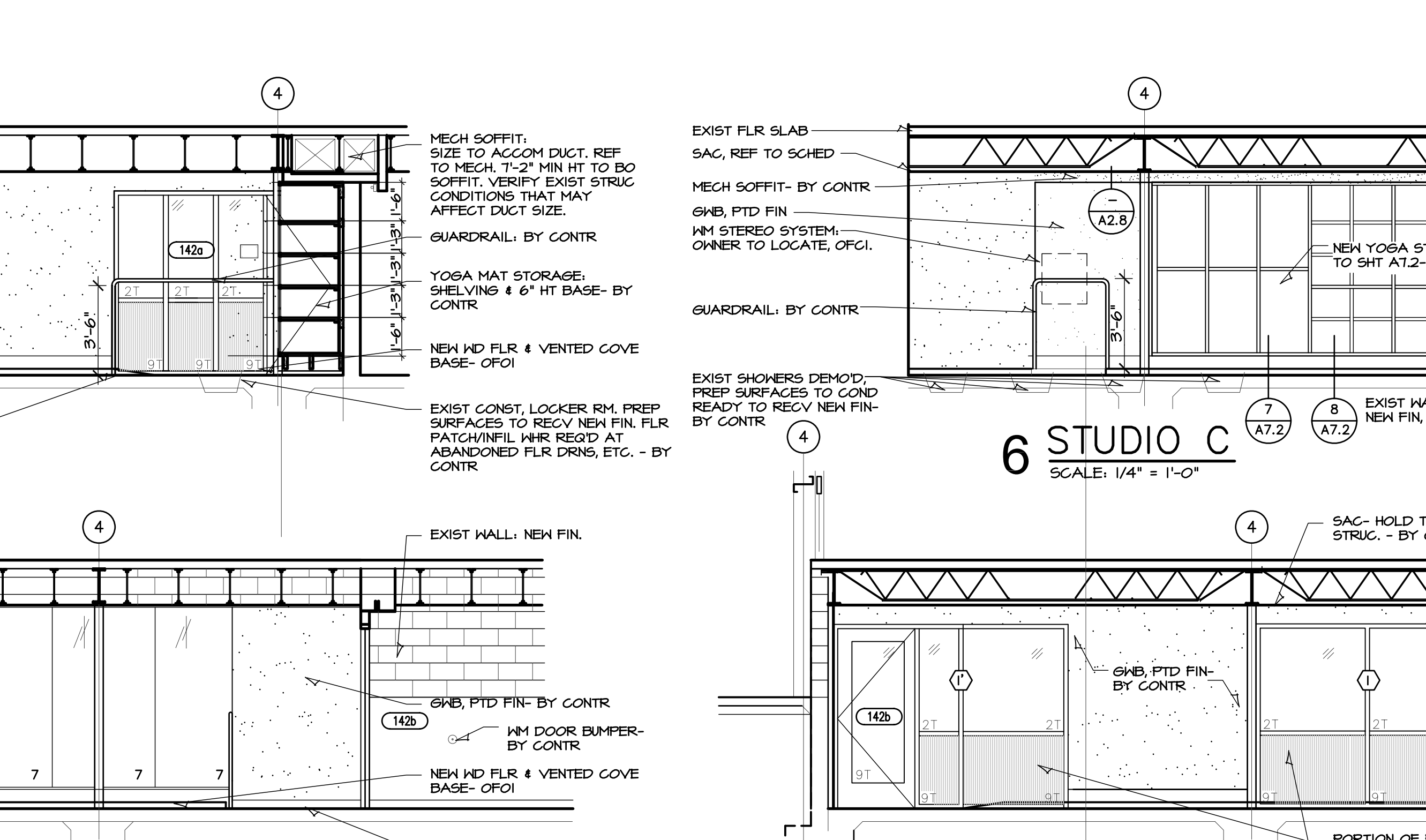
5 STUDIO C
 SCALE: 1/4" = 1'-0"



6 STUDIO C
 SCALE: 1/4" = 1'-0"



7 STUDIO C
 SCALE: 1/4" = 1'-0"



8 STUDIO C
 SCALE: 1/4" = 1'-0"