

HANNON & ASSOCIATES, ARCHITECTS
1726 South Hillside, Wichita, Kansas 67211
Phone (316) 853-5965
Fax (316) 684-1441

2018 GENESIS HEALTH CLUBS OVERLAND PARK 6700 W 110 STREET, 66211



DRAWINGS ISSUED		
NO.	DATE	ITEM ISSUED

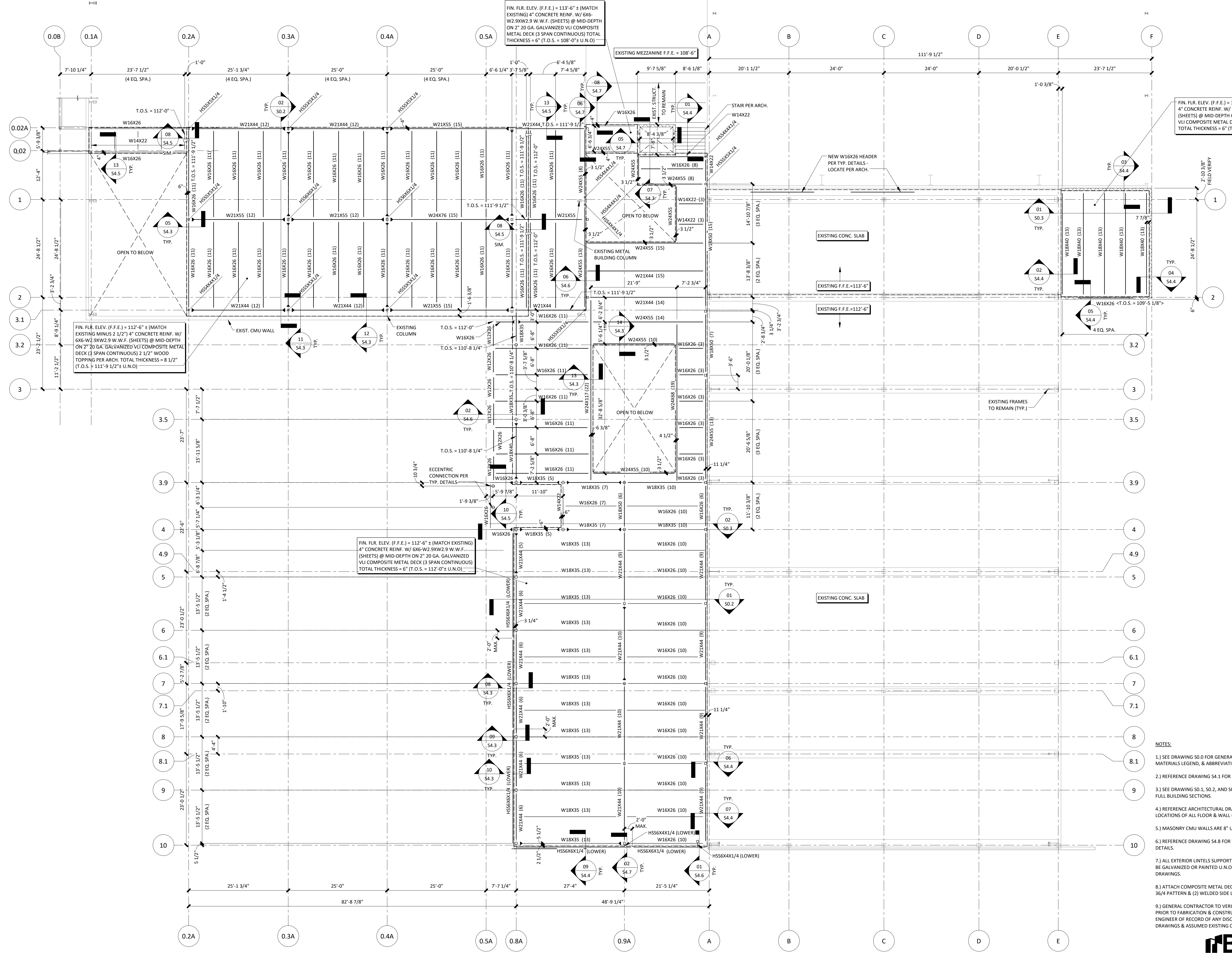
COMPUTER DRAWING

DATE: 2018-05-30
DRAWN BY: S.B. CHECKED BY: J.B.

SHEET
2ND FLOOR FRAMING
PLAN

S2.1

OF SHEETS



NOTES:

- SEE DRAWING S0.0 FOR GENERAL NOTES, SYMBOLS LEGEND, MATERIALS LEGEND, & ABBREVIATION LIST.
- REFERENCE DRAWING S4.1 FOR TYPICAL FRAMING DETAILS.
- SEE DRAWING S0.1, S0.2, AND S0.3 FOR ISOMETRIC VIEW & FULL BUILDING SECTIONS.
- REFERENCE ARCHITECTURAL DRAWINGS TO VERIFY SIZE & LOCATIONS OF ALL FLOOR & WALL OPENINGS.
- MASONRY CMU WALLS ARE 8" U.N.O.
- REFERENCE DRAWING S4.8 FOR TYPICAL MASONRY LINTEL DETAILS.
- ALL EXTERIOR LINTELS SUPPORTING STONE OR BRICK SHALL BE GALVANIZED OR PAINTED U.N.O. ON ARCHITECTURAL DRAWINGS.
- ATTACH COMPOSITE METAL DECK W/ 5/8" PUDDLE WELD IN A 36/4 PATTERN & (2) WELDED SIDE LAP FASTENERS PER SPAN.
- GENERAL CONTRACTOR TO VERIFY ALL EXISTING CONDITIONS PRIOR TO FABRICATION & CONSTRUCTION. G.C. TO NOTIFY ENGINEER OF RECORD OF ANY DISCREPANCIES BETWEEN DRAWINGS & ASSUMED EXISTING CONSTRUCTION.



2ND FLOOR FRAMING PLAN | 01
3/32" = 1'-0" S2.1

1132 WEST 79th STREET
Lenexa, Kansas 66214
Phone 913.492.7400
www.IBSEStructural.com
Project Number 16-306