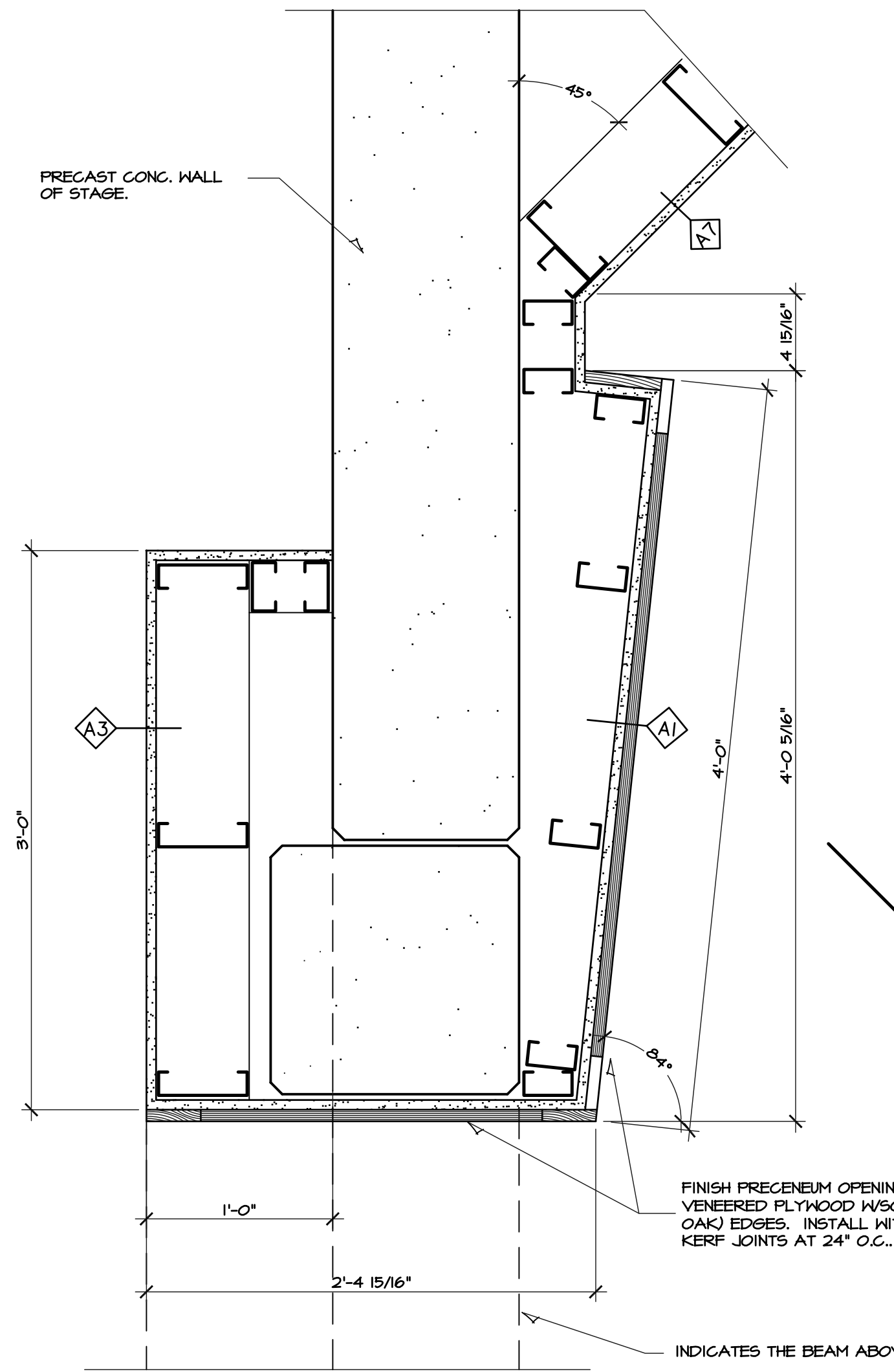


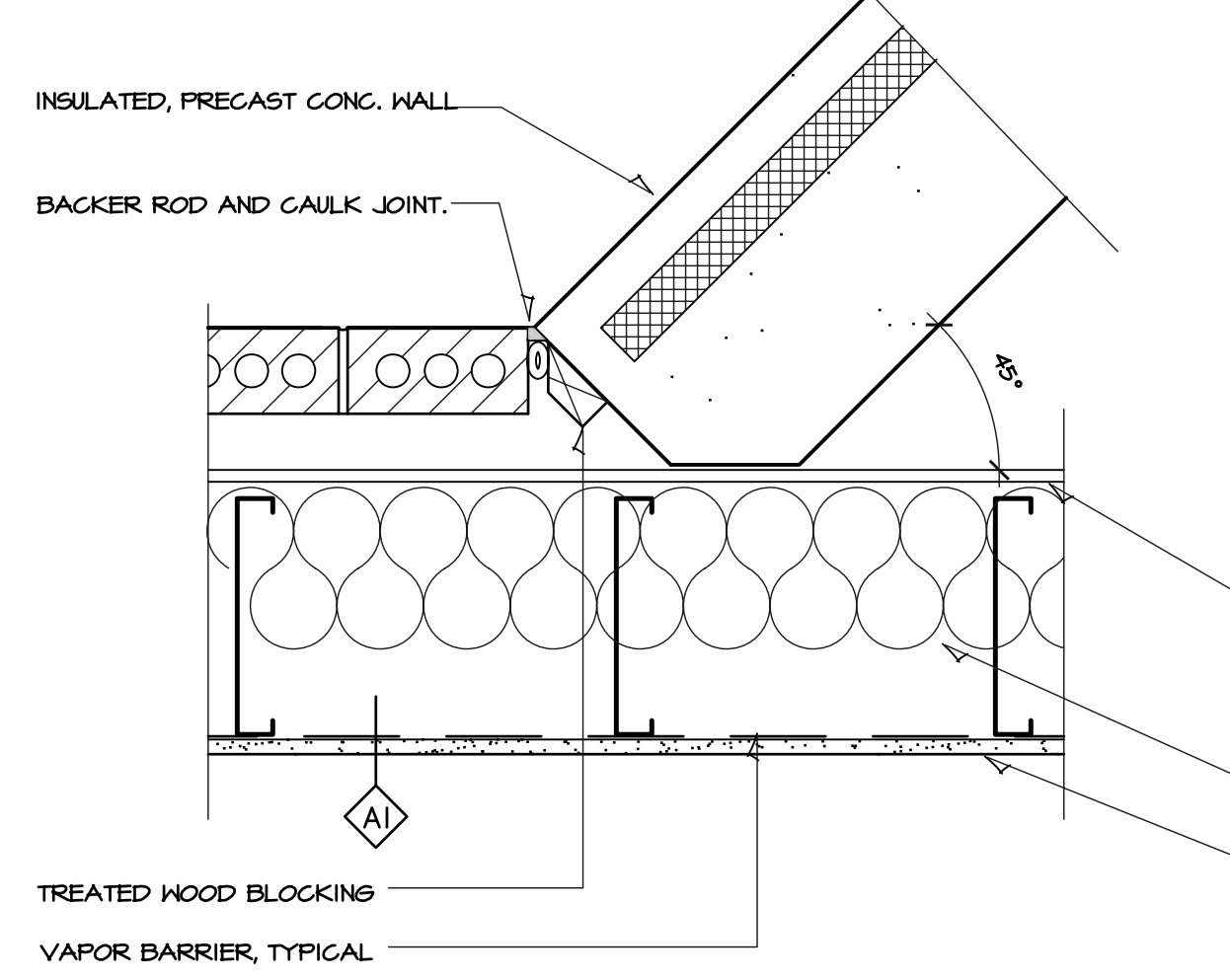


HANNEY & ASSOCIATES, ARCHITECTS
 1726 South Hillside, Wichita, Kansas, 67211
 Phone (316) 883-8965
 Fax (316) 884-4411
 www.haarchitects.com

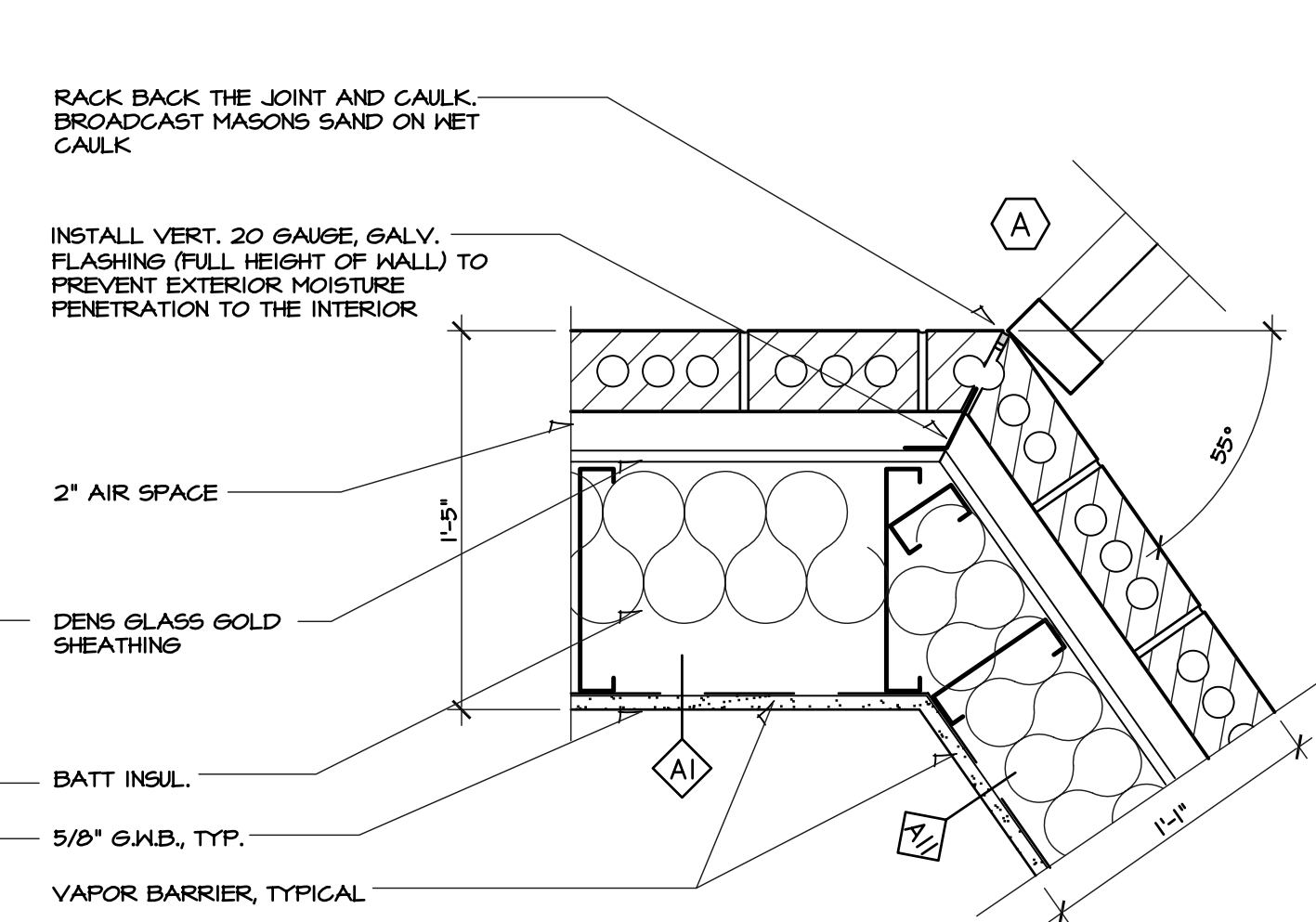
2009
 ANDALE HIGH SCHOOL
 ANDALE, KANSAS
 RENWICK UNIFIED SCHOOL DISTRICT 267



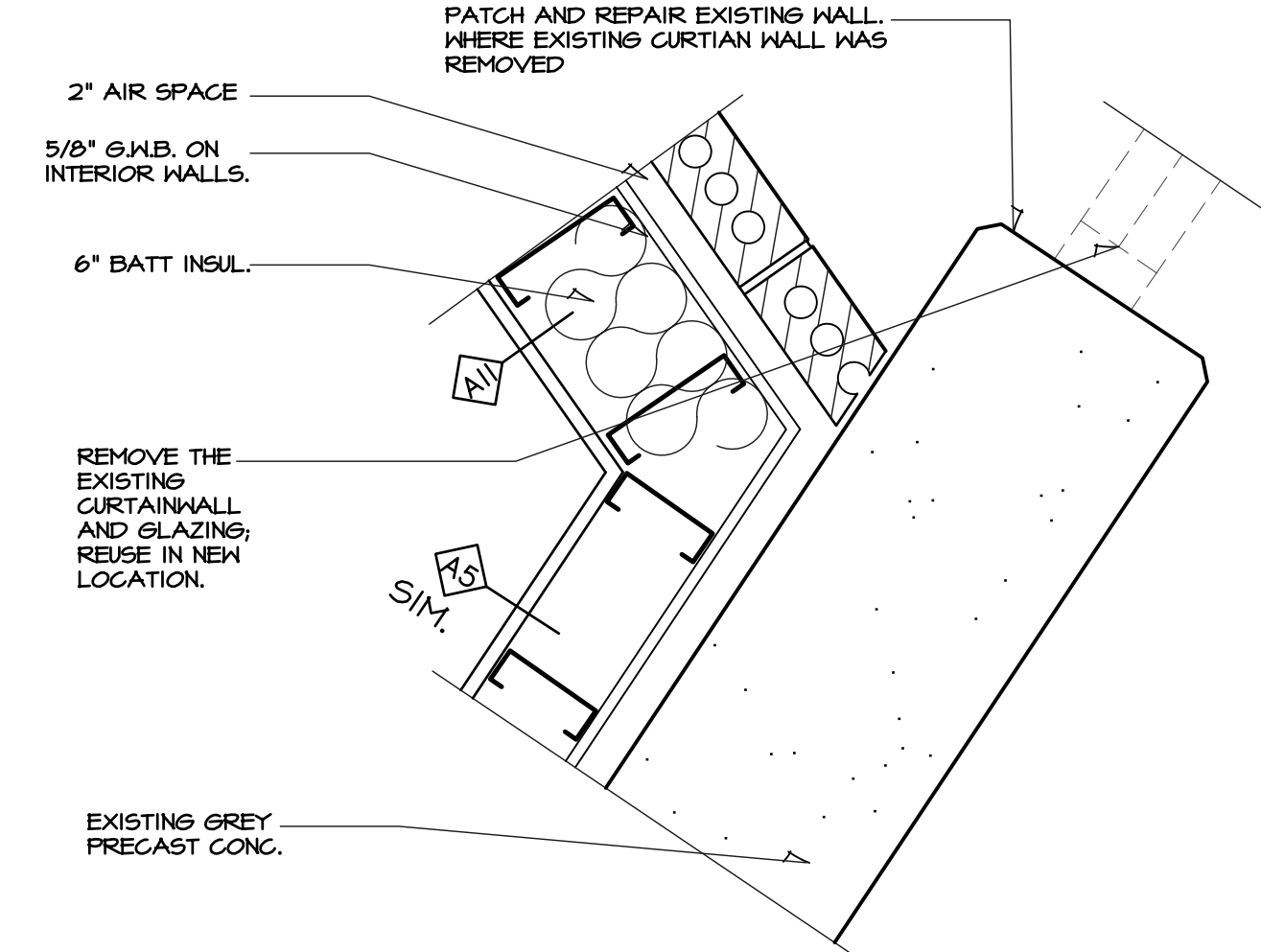
1 WALL DETAIL
 SCALE: 1-1/2" = 1'-0"



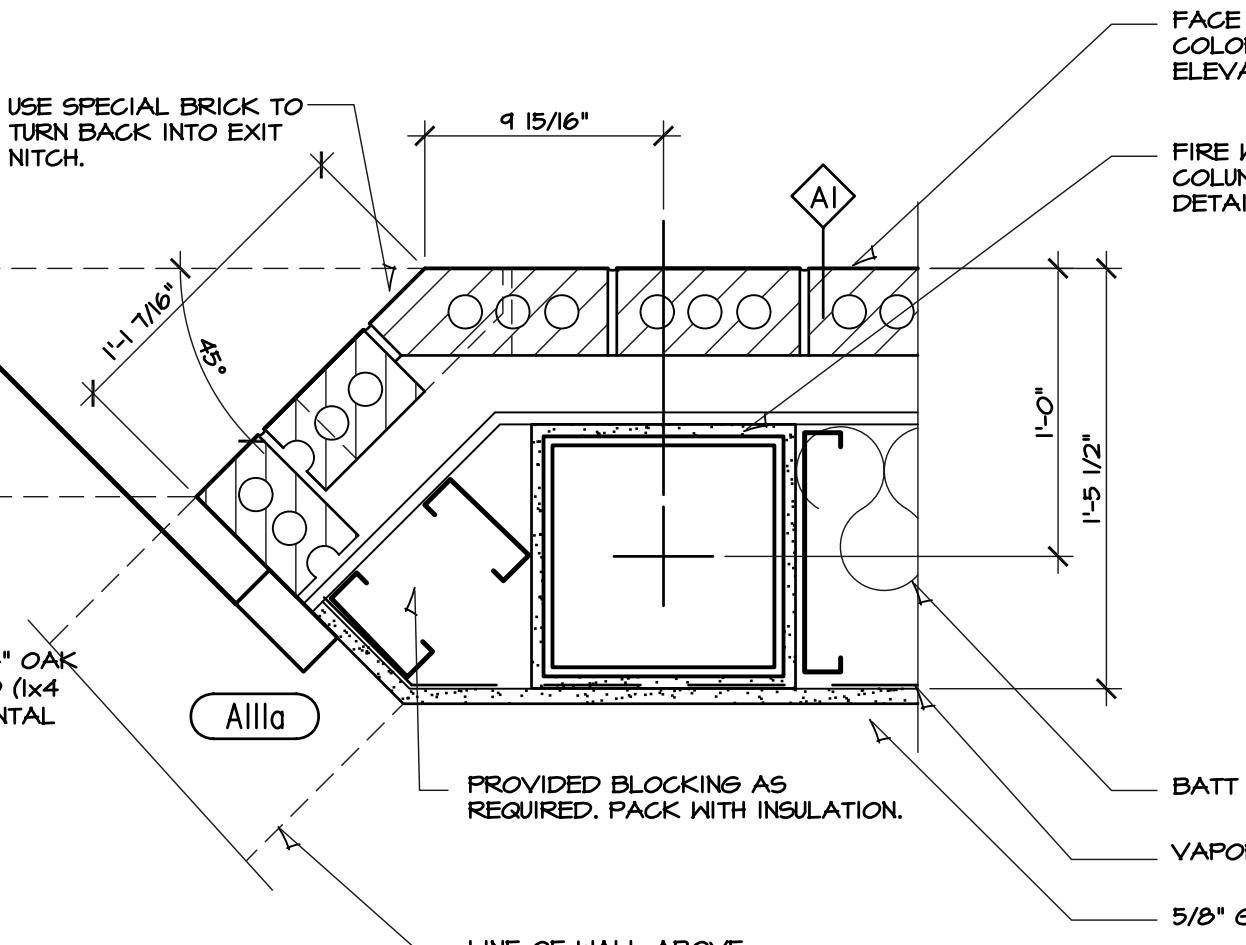
2 WALL DETAIL
 SCALE: 1-1/2" = 1'-0"



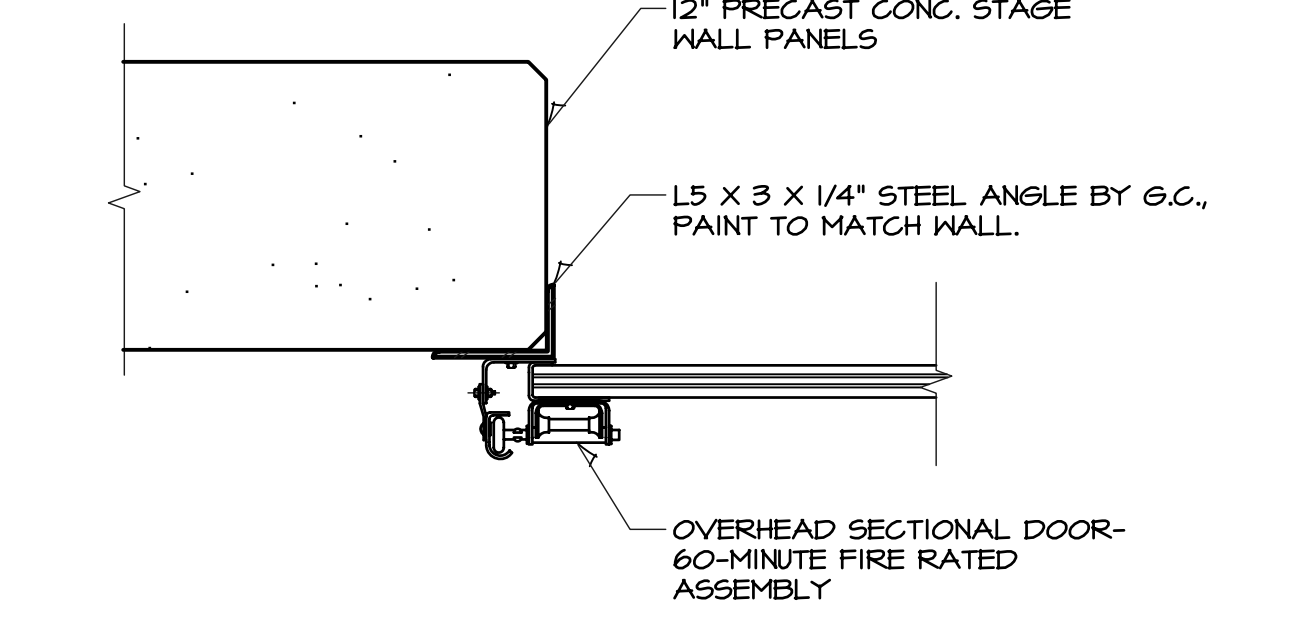
3 WALL DETAIL
 SCALE: 1-1/2" = 1'-0"



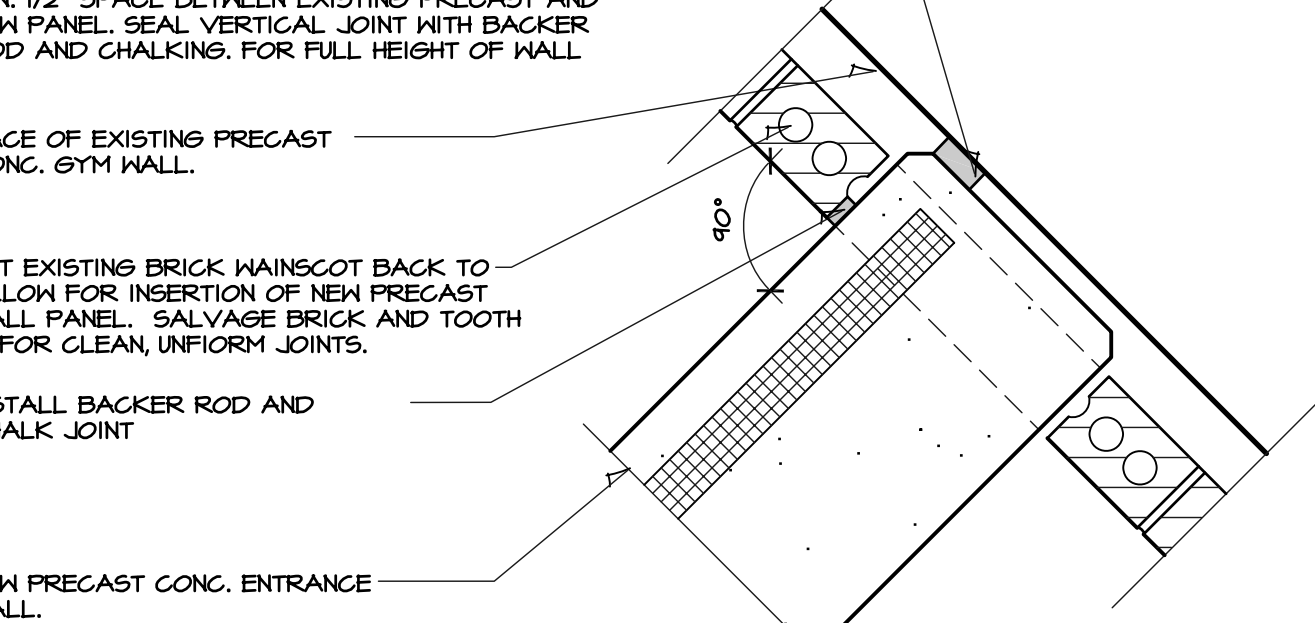
4 WALL DETAIL
 SCALE: 1-1/2" = 1'-0"



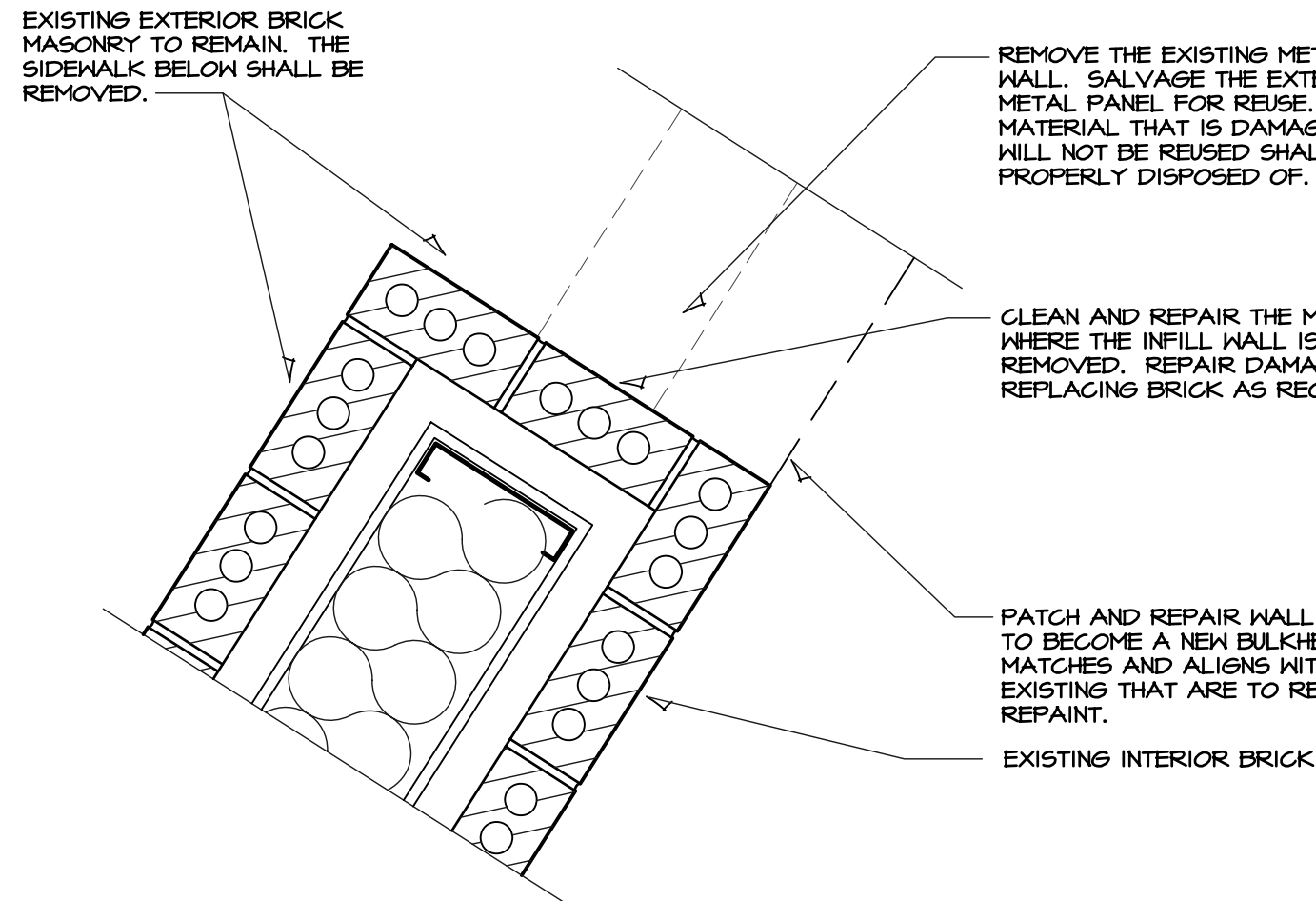
6 WALL DETAIL
 SCALE: 1-1/2" = 1'-0"



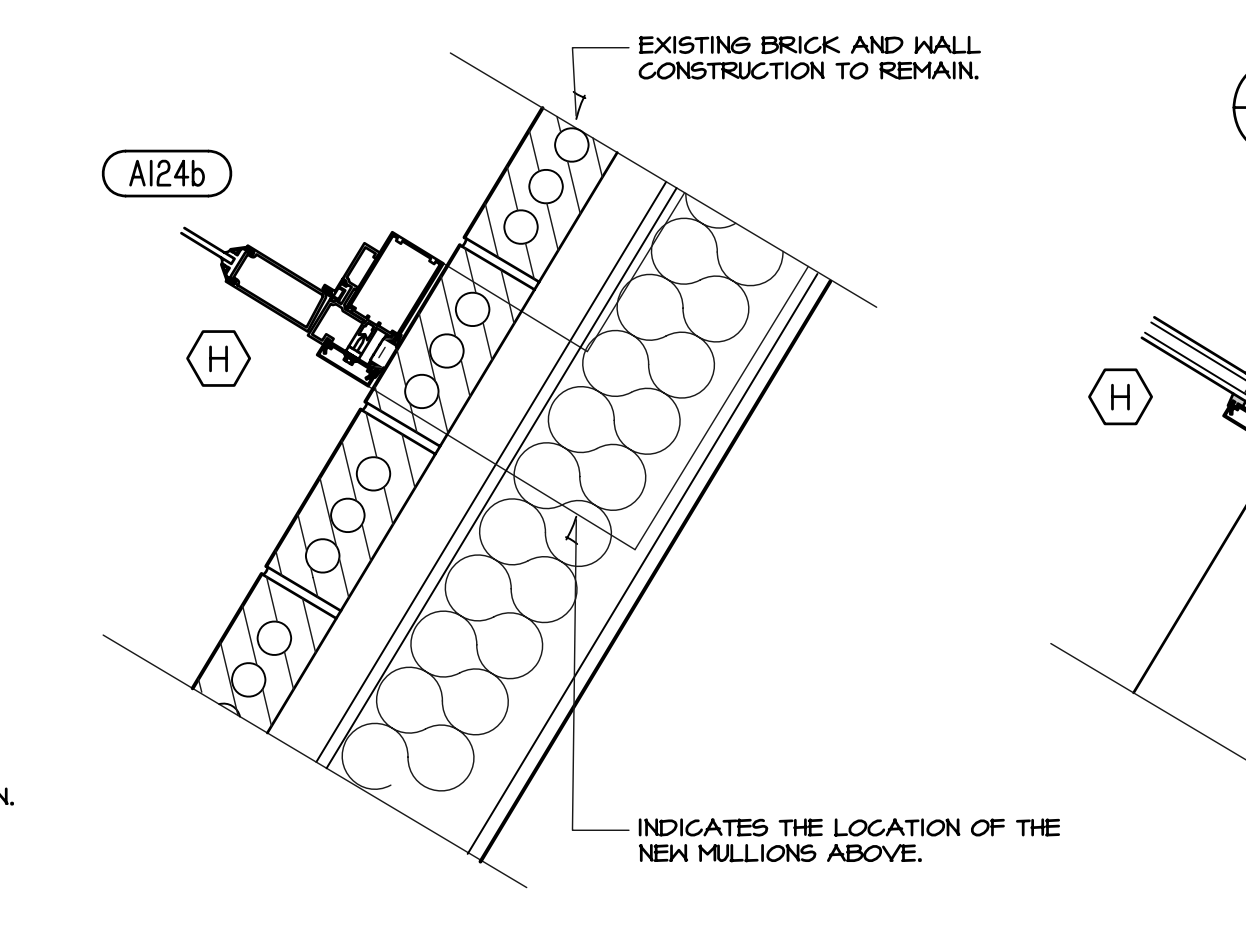
7 WALL DETAIL
 SCALE: 1-1/2" = 1'-0"



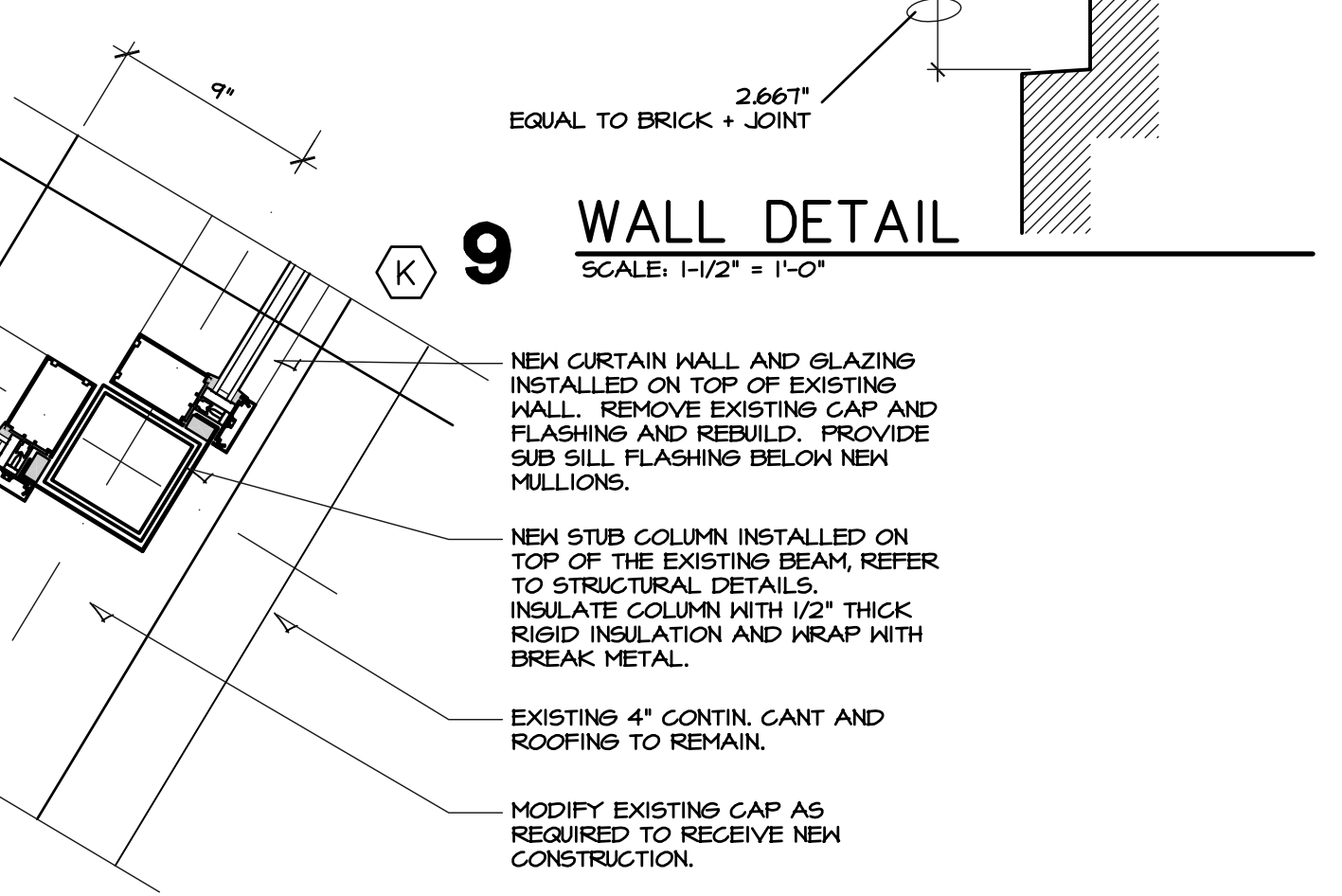
8 WALL DETAIL
 SCALE: 1-1/2" = 1'-0"



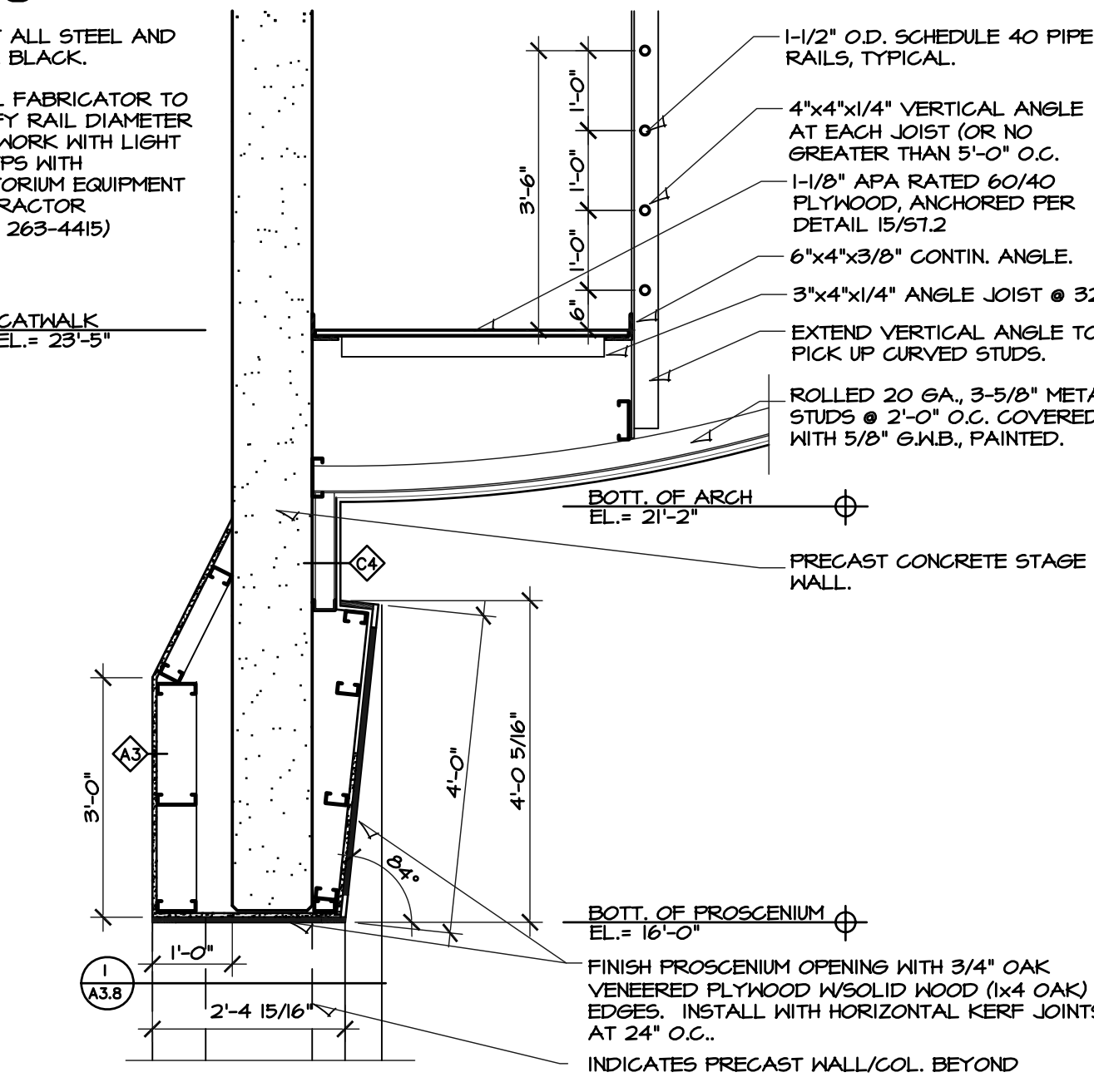
5 WALL DETAIL
 SCALE: 1-1/2" = 1'-0"



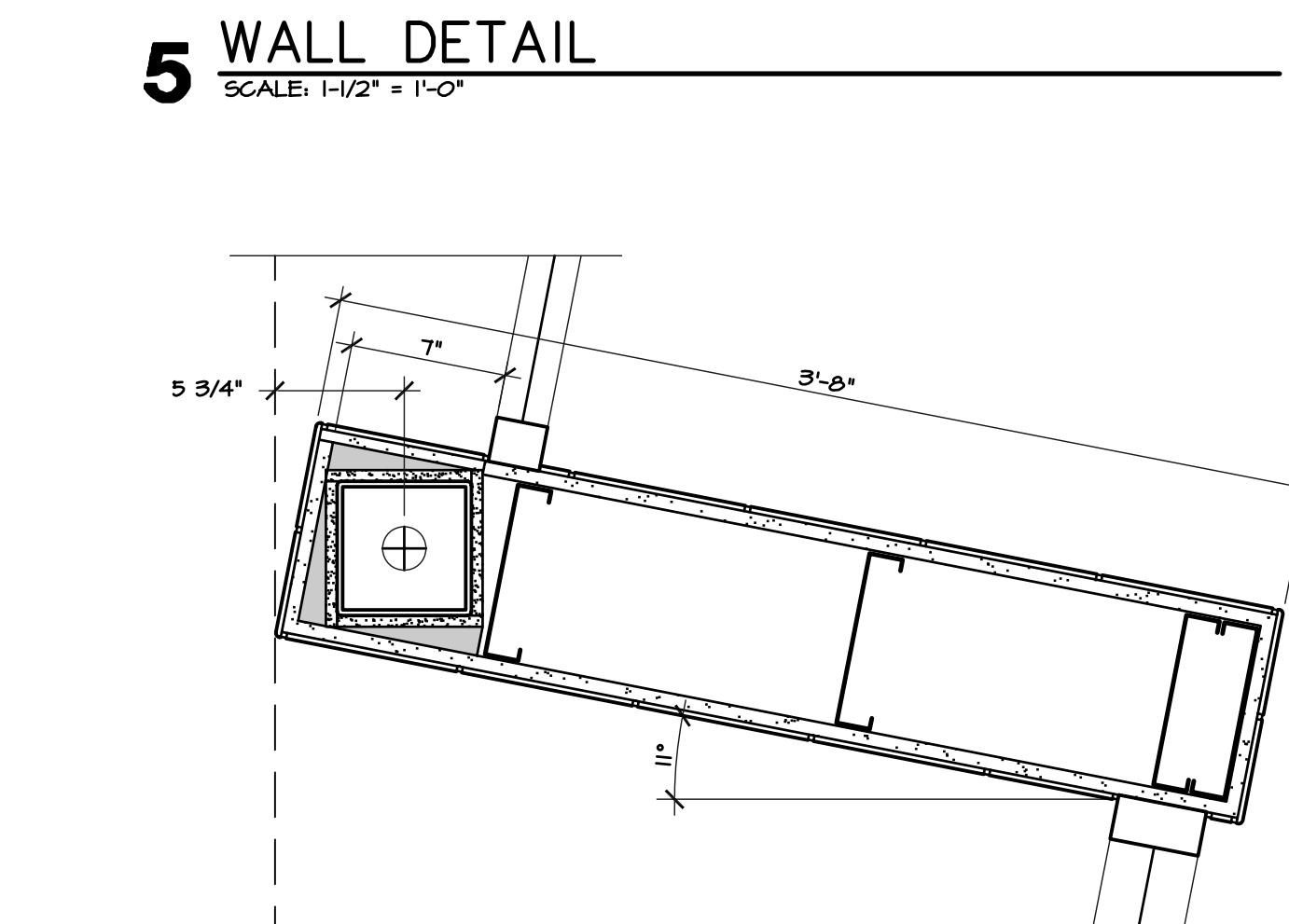
10 LOWER WALL WALL DETAIL
 SCALE: 1-1/2" = 1'-0"



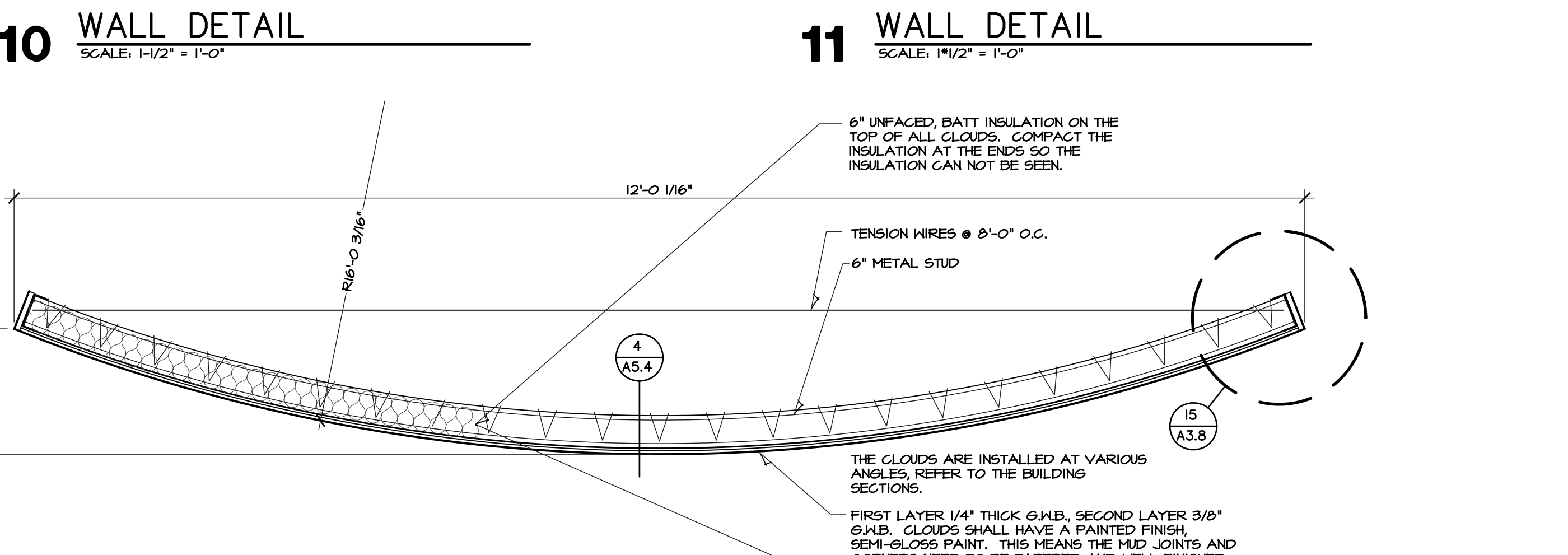
11 UPPER WALL WALL DETAIL
 SCALE: 1-1/2" = 1'-0"



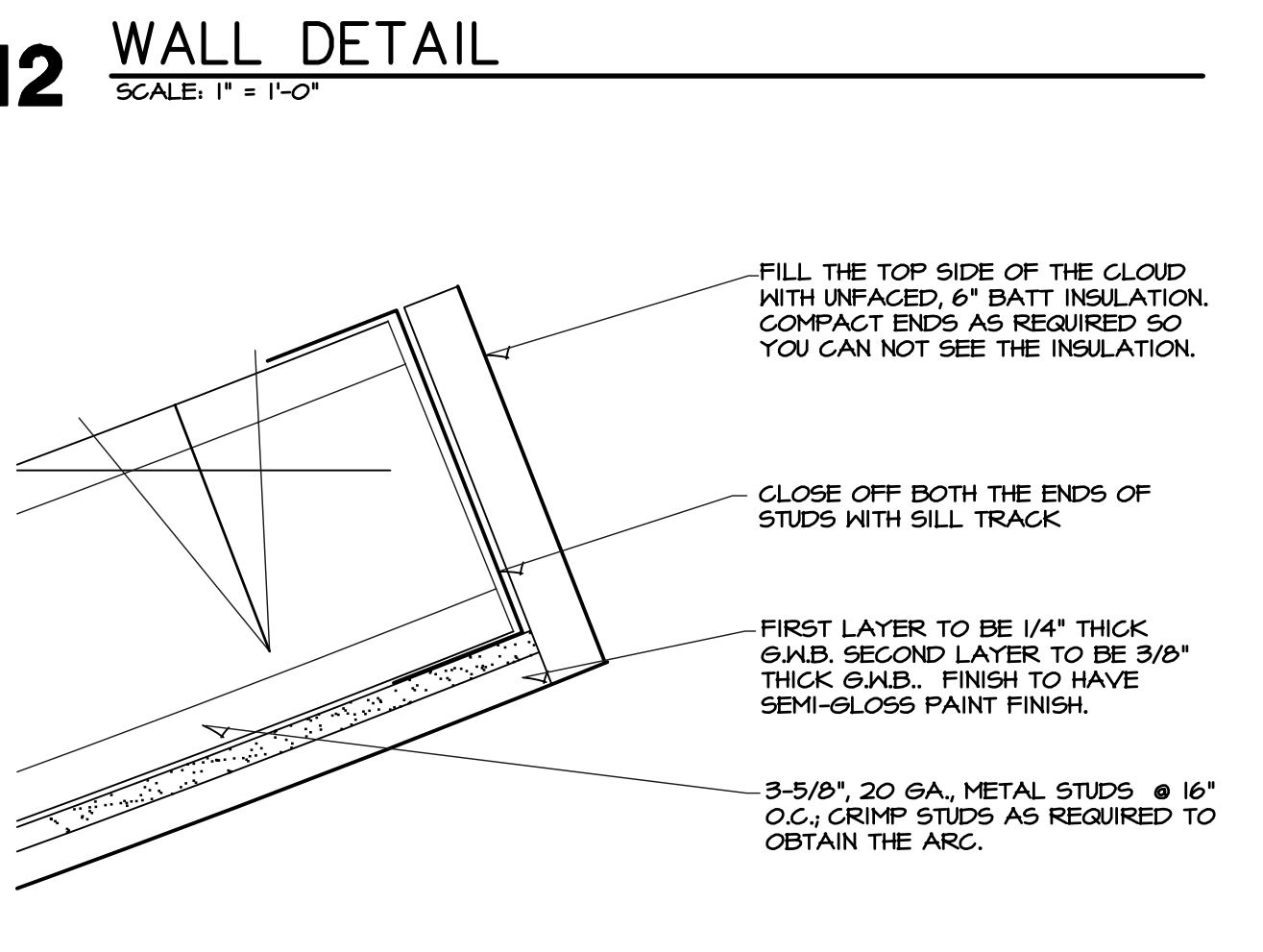
12 WALL DETAIL
 SCALE: 1" = 1'-0"



13 WALL DETAIL
 SCALE: 1-1/2" = 1'-0"



14 AUDITORIUM CLOUD DETAIL
 SCALE: 1" = 1'-0"



15 CLOUD DETAIL
 SCALE: 1" = 1'-0"

DRAWINGS ISSUED		
NO.	DATE	ITEM ISSUED
6	3/19	ADDENDUM 3
5	2/28	ISSUED FOR BIDS
4	2/24	REVIEW
3	2/12	REVIEW
2	2/05	REVIEW
1	1/30	REVIEW

COMPUTER DRAWING
 267AH308.DWG

DATE: FEBRUARY 2009
 DRAWN BY: JP, TH, SF, BS
 CHECKED BY: MH

SHEET
A3.8
 OF SHEETS