



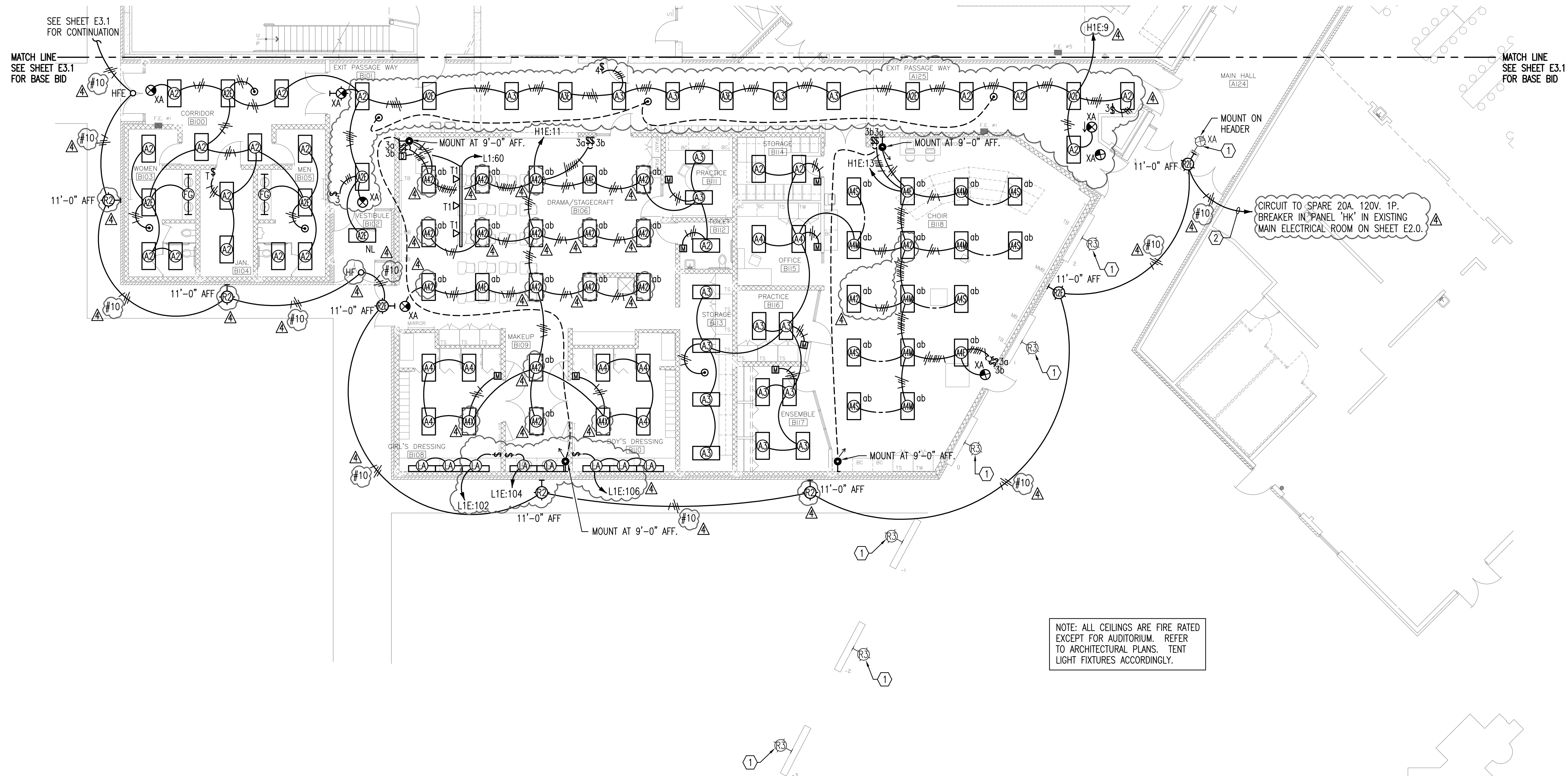
HANNEY & ASSOCIATES, ARCHITECTS
 1726 South Hillside, Wichita, Kansas, 67211
 Phone (316) 683-8965
 Fax (316) 684-1441
 www.haarchitects.com

KEYED NOTES:

- 1 RELOCATED LIGHT FIXTURE.
- 2 CIRCUIT VIA EXISTING CONTACTOR 'A' CONTROLLED BY PHOTOCELL/TIMECLOCK LOCATED IN EXISTING ELECTRICAL ROOM. SEE SHEET E2.0 FOR LOCATION. CIRCUIT EMERGENCY LIGHTS AHEAD OF TIMECLOCK.

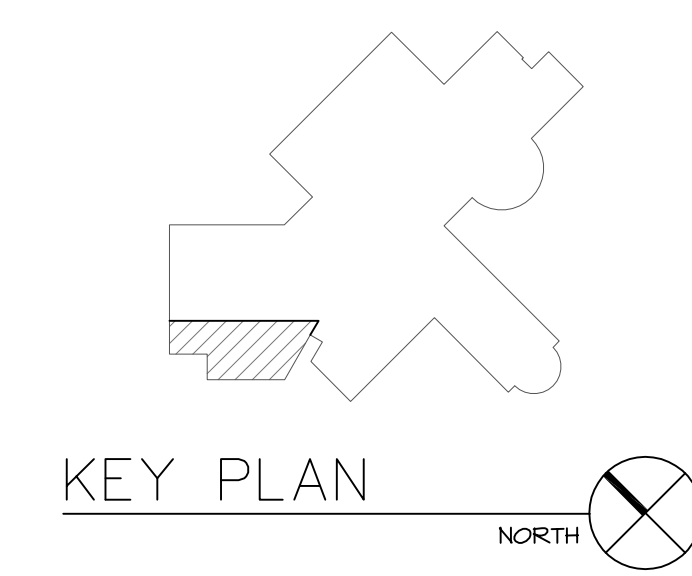
PLAN NOTES:

- 1. BRANCH CIRCUITS ARE INDICATED AS ONE CIRCUIT HOME RUNS WITH INDIVIDUAL NEUTRALS. CONTRACTOR MAY GROUP SINGLE POLE BRANCH CIRCUITS IN MULTIPLE CIRCUIT HOME RUNS WITH A SHARED NEUTRAL (3 CIRCUITS MAXIMUM). SUCH GROUPED CIRCUITS ARE THEN MULTIWIRED BRANCH CIRCUITS. INSTALLATION OF MULTIWIRED BRANCH CIRCUITS SHALL COMPLY WITH ALL N.E.C. MULTIWIRED BRANCH CIRCUIT REQUIREMENTS, INCLUDING A SINGLE DISCONNECTING MEANS PER N.E.C. ARTICLE 210, PARAGRAPH 210.4(B).
- 2. ALL PENETRATIONS IN THE RATED WALLS AND CEILINGS SHALL BE SEALED WITH A MATERIAL CAPABLE OF PREVENTING THE PASSAGE OF FLAMES AND HOT GASSES. THE SEALANT SHALL HAVE A T-RATING OF ONE HOUR.
- 3. ALL PIPING, CONDUIT, AND OUTLET BOXES (ELECTRIC, TELEPHONE, COMPUTER, ETC.) IN THE RATED WALLS OR CEILING SHALL BE CONSTRUCTED OF NON-COMBUSTIBLE MATERIAL.
- 4. REFER TO ARCHITECTURAL REFLECTED CEILING PLANS FOR EXACT LIGHT FIXTURE LOCATIONS. VERIFY ALL DISCREPANCIES WITH ARCHITECT PRIOR TO ROUGH-IN.



**ALTERNATE #1
 ELECTRICAL LIGHTING PLAN - LOWER LEVEL**

SCALE: 1/8" = 1'-0"



2009
 ANDALE HIGH SCHOOL
 ANDALE, KANSAS
 RENWICK UNIFIED SCHOOL DISTRICT 267

DRAWINGS ISSUED		
NO.	DATE	ITEM ISSUED
5	2/28	ISSUED FOR BIDS
4	2/24	REVIEW
3	2/12	REVIEW
2	2/05	REVIEW
1	1/30	REVIEW

COMPUTER DRAWING

DATE: FEBRUARY 2009
 DRAWN BY: JLM
 CHECKED BY: DLD

SHEET
E3.3
 OF 16 SHEETS

Saved: 03-25-2009 7:46:00 AM by: JLL
 Plot Scale: 1/8" = 1'-0"
 E:\2008\08004\001\08004-01-E3.3-ELECTRICAL LIGHTING PLAN

Professional Engineering Consultants, P.A.
 303 S. TOPEKA - WICHITA, KANSAS 67203 • 316.262.2691 • FAX 316.262.3003
 www.perc.com