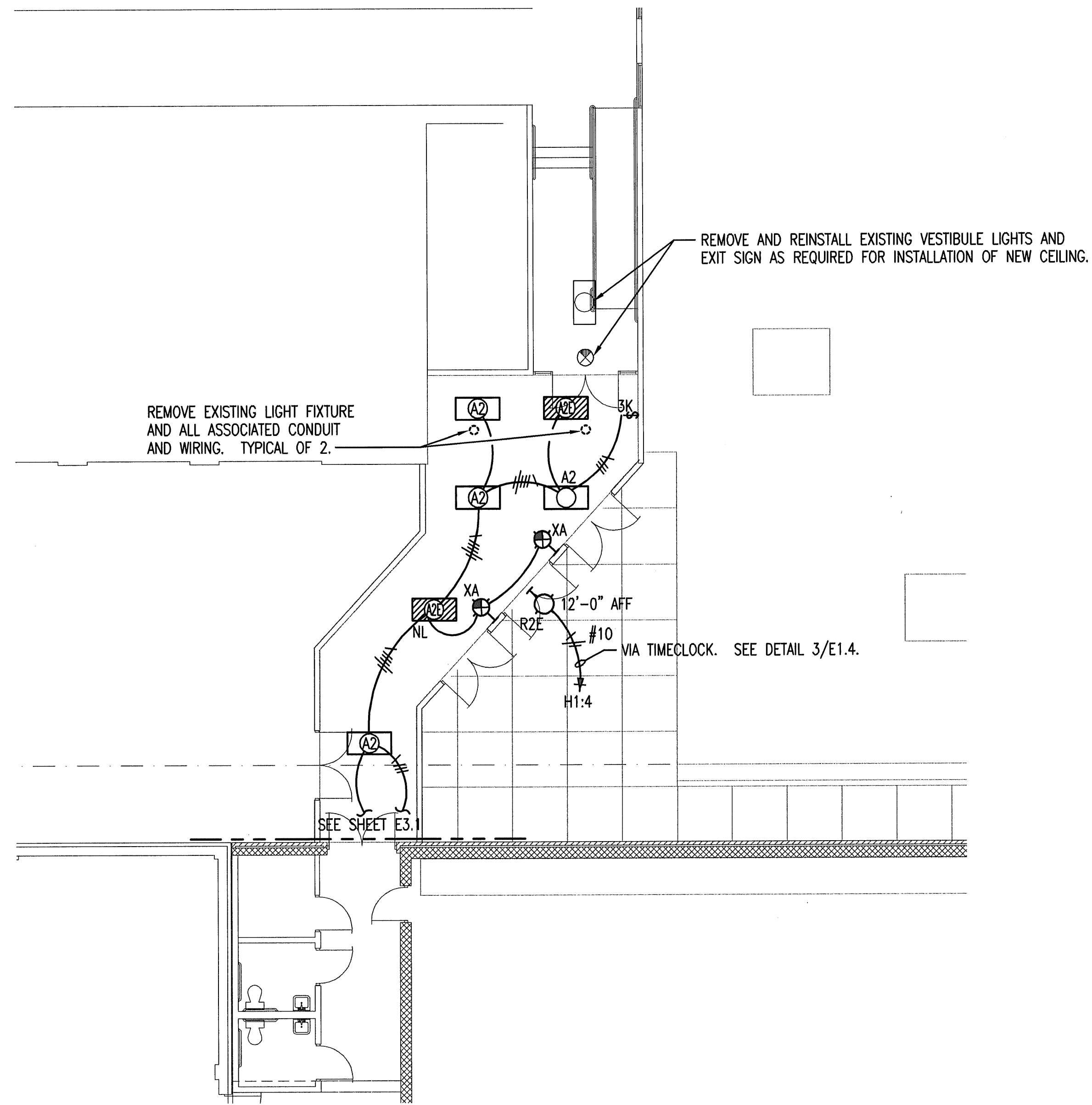
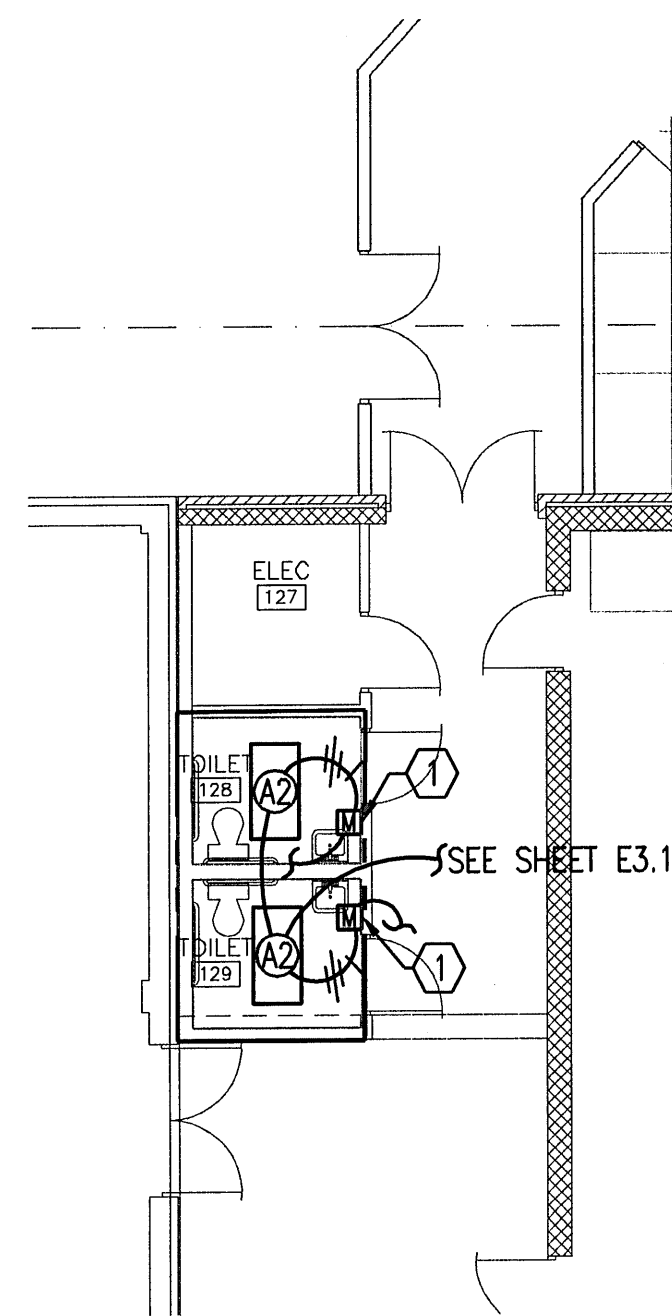


ELECTRICAL LIGHTING PLAN - ALTERNATE #1
1/8" = 1'-0"



ELECTRICAL LIGHTING PLAN - ALTERNATE #2
1/8" = 1'-0"



ELECTRICAL LIGHTING PLAN - ALTERNATE #3
1/8" = 1'-0"

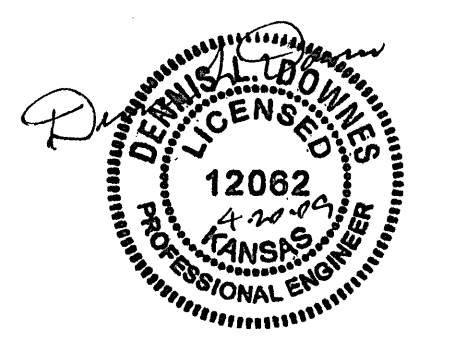
PLAN NOTES:

- BRANCH CIRCUITS ARE INDICATED AS ONE CIRCUIT HOME RUNS WITH INDIVIDUAL NEUTRALS. A MAXIMUM OF THREE CIRCUITS MAY BE GROUPED IN A SINGLE CONDUIT. WHERE MULTIPLE CIRCUITS ARE LOCATED IN THE SAME RACEWAY, JUNCTION BOX OR ENCLOSURE, NEUTRALS SHALL BE MARKED OR LABELED TO INDICATE WHICH CIRCUIT THEY ARE ASSOCIATED WITH. SEE SPECIFICATION SECTION 16120 FOR ADDITIONAL INFORMATION.
- A GROUND CONDUCTOR SIZED PER N.E.C. ARTICLE 250 IS REQUIRED IN ALL CONDUITS.
- ALL PENETRATIONS IN THE RATED WALLS AND CEILINGS SHALL BE SEALED WITH A MATERIAL CAPABLE OF PREVENTING THE PASSAGE OF FLAMES AND HOT GASSES. THE SEALANT SHALL HAVE A T-RATING OF ONE HOUR.
- ALL PIPING, CONDUIT, AND OUTLET BOXES (ELECTRIC, TELEPHONE, COMPUTER, ETC.) IN THE RATED WALLS OR CEILING SHALL BE CONSTRUCTED OF NON-COMBUSTIBLE MATERIAL.
- REFER TO ARCHITECTURAL REFLECTED CEILING PLANS FOR EXACT LIGHT FIXTURE LOCATIONS. VERIFY ALL DISCREPANCIES WITH ARCHITECT PRIOR TO ROUGH-IN.

KEYED NOTES:

- PROVIDE DUAL RELAY MOTION SENSOR FOR CONTROL OF EXHAUST FAN EF-G2 WITH ROOM LIGHTS IN STORAGE 124 AND 126.

NOTE: ALL CEILINGS ARE FIRE RATED. REFER TO ARCHITECTURAL PLANS. TENT LIGHT FIXTURES ACCORDINGLY.



HANNEY & ASSOCIATES, ARCHITECTS
1726 South Hillside, Wichita, Kansas, 67211
Phone (316) 683-8865
Fax (316) 684-1441
www.haarchitects.com

2009
GARDEN PLAIN HIGH SCHOOL - NEW GYM
GARDEN PLAIN, KANSAS
RENWICK UNIFIED SCHOOL DISTRICT 267

DRAWINGS ISSUED		
NO.	DATE	ITEM ISSUED
1	4/17	FOR BIDS

COMPUTER DRAWING

DATE: APRIL 2004
DRAWN BY: JLM
CHECKED BY: DLD

SHEET
E3.2

OF 16 SHEETS

Saved 04-20-2009 8:27:24 AM by JLM
File Name: 136_04-20-2009_8:27:06.W
E:\3009\08004\021\08004-02-ESF-MAN LEVEL.AUTS by JLM

Professional Engineering Consultants, P.A.
303 S. FORBES • WICHITA, KANSAS 67202 • 316.262.2691 • FAX 316.262.3003
www.peci.com