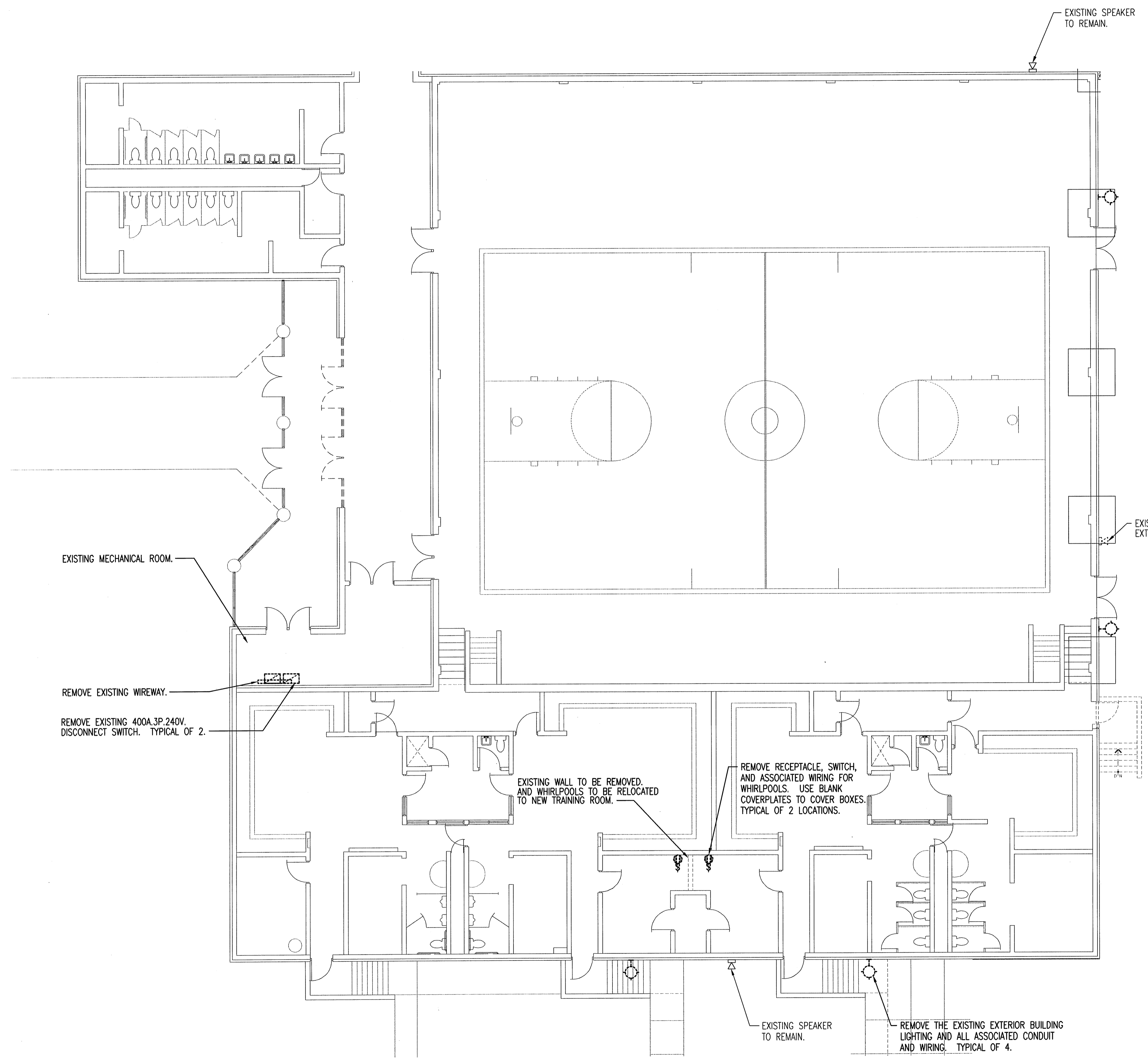


HANNEY & ASSOCIATES, ARCHITECTS  
 1726 South Hillside, Wichita, Kansas, 67211  
 Phone (316) 683-8965  
 Fax (316) 684-1441  
 www.haarhitects.com

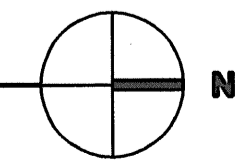
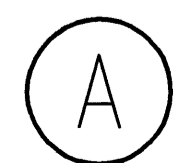
**DEMOLITION NOTES:**

- DEMOLITION PLANS SHOW THE GENERAL EXTENT OF THE ELECTRICAL DEMOLITION WORK. THE ELECTRICAL CONTRACTOR SHALL DISCONNECT ELECTRICAL SERVICES TO ALL EQUIPMENT BEING REMOVED, SEE MECHANICAL PLANS. OWNER SHALL HAVE THE OPTION TO RETAIN REUSABLE ITEMS, SUCH AS COVERPLATES, RECEPTACLES, LIGHTS, PANELS, ETC. NOT BEING USED IN THE FINISHED WORK. COORDINATE WITH OWNER PRIOR TO STARTING DEMOLITION. PROPERLY AND LEGALLY DISPOSE OF ALL EQUIPMENT AND MATERIALS BEING REMOVED.
- REMOVE ALL CONDUIT LEFT EXPOSED BY REMOVAL OF WALLS AND CEILINGS IN REMODELED AREAS. PLUG BOTH ENDS OF REMAINING CONDUIT IN WALL OR FLOOR WHERE CUT.
- ELECTRICAL OUTLETS, ETC. POSSIBLY CONCEALED BY STORAGE SHELVING, CASEWORK, FURNITURE, ETC. ARE NOT SHOWN AND MAY REQUIRE REMOVAL.
- GENERAL CONTRACTOR SHALL BE RESPONSIBLE FOR PATCHING ALL OPENINGS IN EXISTING CONSTRUCTION AFTER REMOVAL OF EQUIPMENT AND ELECTRICAL DEVICES, ETC.
- WHERE EQUIPMENT AND OTHER DEVICES ARE BEING REMOVED, THE CIRCUITING SHALL BE REMOVED, IF POSSIBLE, BACK TO POINT OF SUPPLY. WHERE REQUIRED, CIRCUITING SHALL BE EXTENDED TO MAINTAIN CONTINUITY OF THE CIRCUIT OR OPERATION OF THE SYSTEM.
- ALL DEVICES SHOWN DASHED ON THE DEMOLITION PLAN(S) SHALL BE REMOVED, UNLESS NOTED OTHERWISE.
- PROVIDE MATCHING BLANK COVERPLATES WHERE DEVICES ARE BEING REMOVED FROM EXISTING WALLS TO REMAIN.
- FIELD VERIFY ALL EXISTING CONDITIONS AND DIMENSIONS PRIOR TO BEGINNING WORK.



**ELECTRICAL PARTIAL DEMOLITION PLAN -  
 EXISTING GYM & LOCKER ROOMS**

1/8" = 1'-0"



Saved 04-19-2009 5:37:22 PM by JLL  
 Plot Scale: 1/8" = 1'-0" 04-20-2009 8:42:14 AM  
 E:\2008\08004\02\08004-02-01-ELECTRICAL DEMO PLAN

**2009**  
 GARDEN PLAIN HIGH SCHOOL - NEW GYM  
 GARDEN PLAIN, KANSAS  
 RENWICK UNIFIED SCHOOL DISTRICT 267

DRAWINGS ISSUED		
NO.	DATE	ITEM ISSUED
1	4/17	FOR BIDS

COMPUTER DRAWING

DATE: APRIL 2009  
 DRAWN BY: JLM CHECKED BY: DLD

SHEET  
**ED1.1**  
 OF 16 SHEETS

Professional Engineering Consultants, P.A.  
 303 S. TOPEKA • WICHITA, KANSAS 67202 • 316-262-2691 • FAX 316-262-3003  
 www.p-ec.com