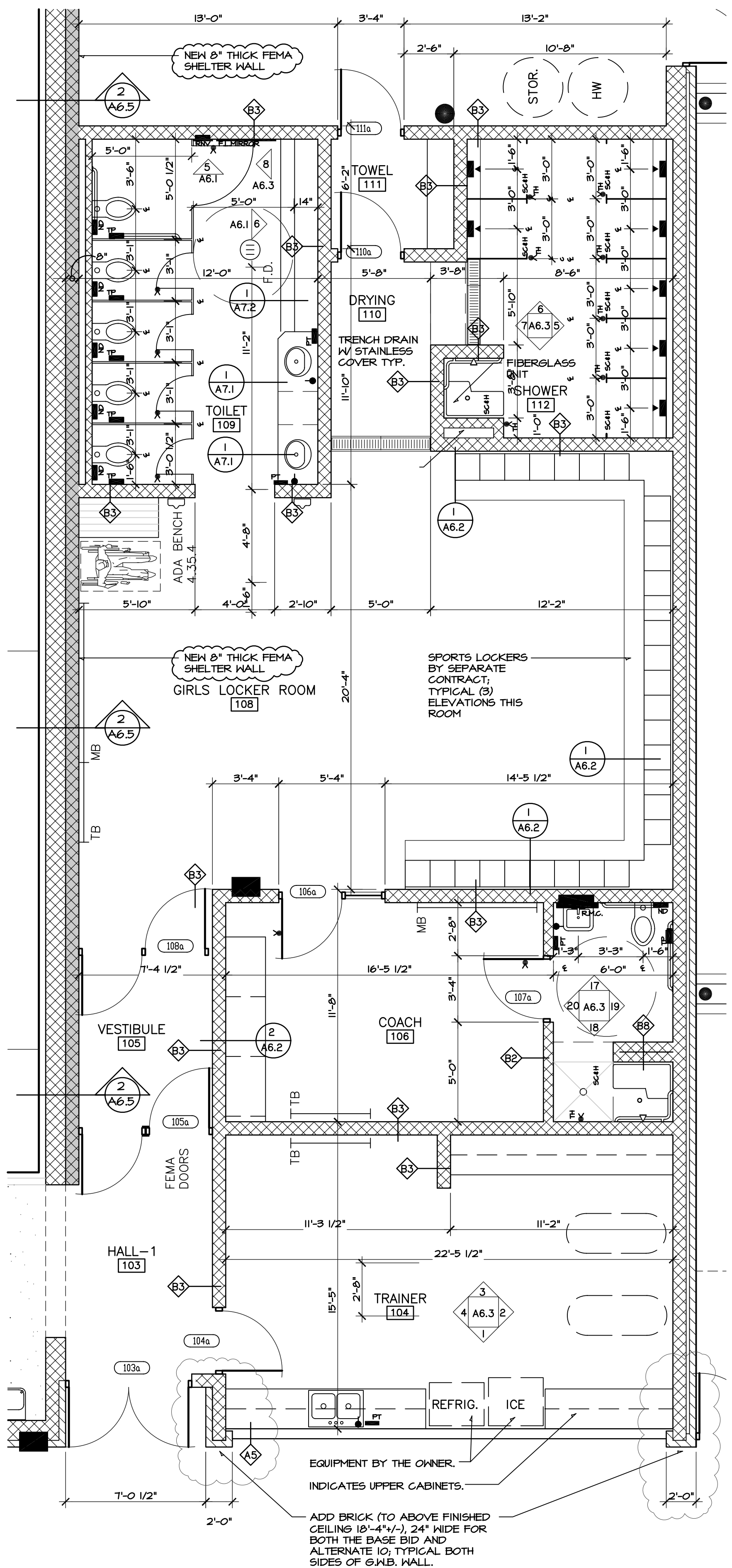


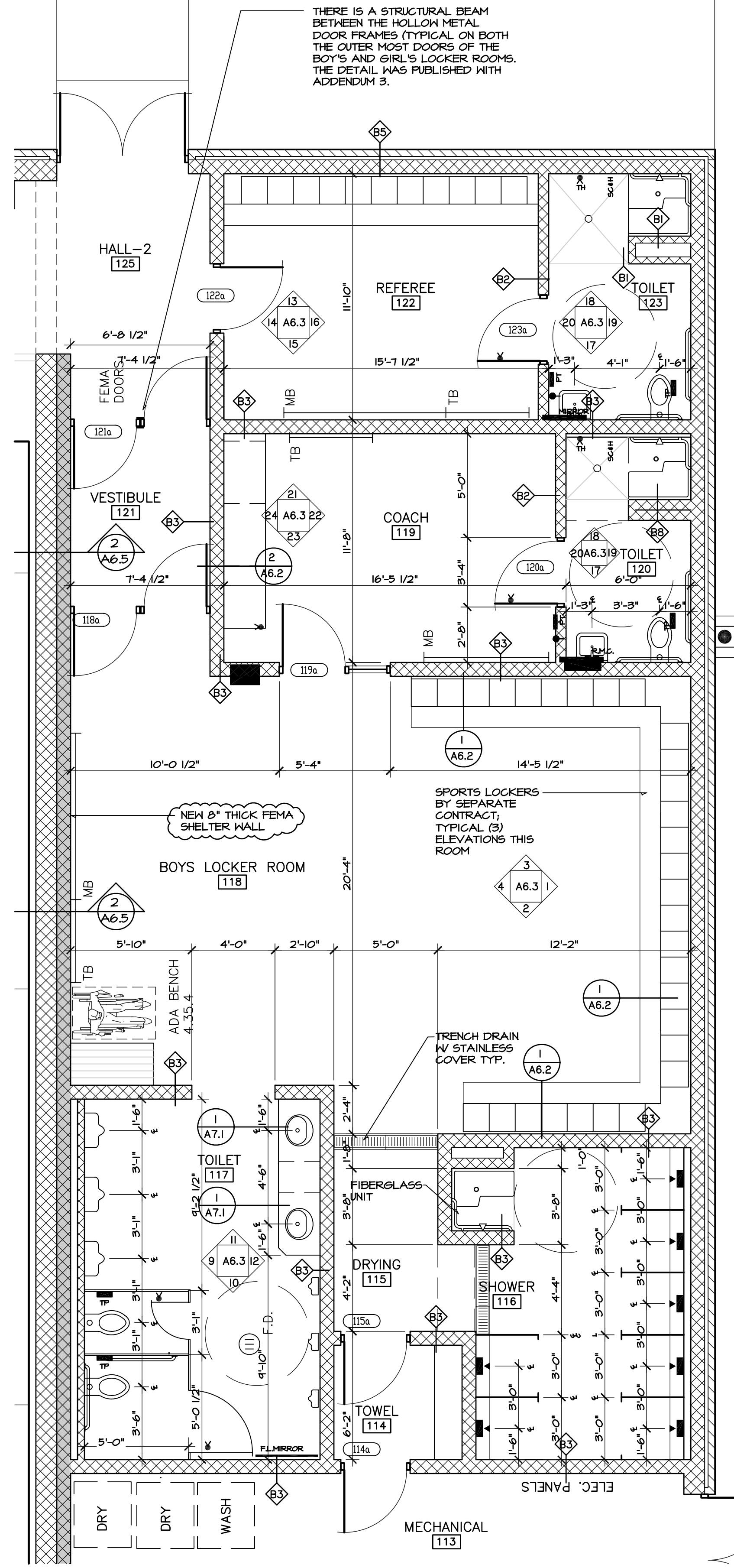


HANNEY & ASSOCIATES, ARCHITECTS
 1726 South Hillside, Wichita, Kansas, 67211
 Phone (316) 683-8965
 Fax (316) 684-1441
 www.haarchitects.com

2009
 GARDEN PLAIN HIGH SCHOOL - NEW GYM
 GARDEN PLAIN, KANSAS
 RENWICK UNIFIED SCHOOL DISTRICT 267

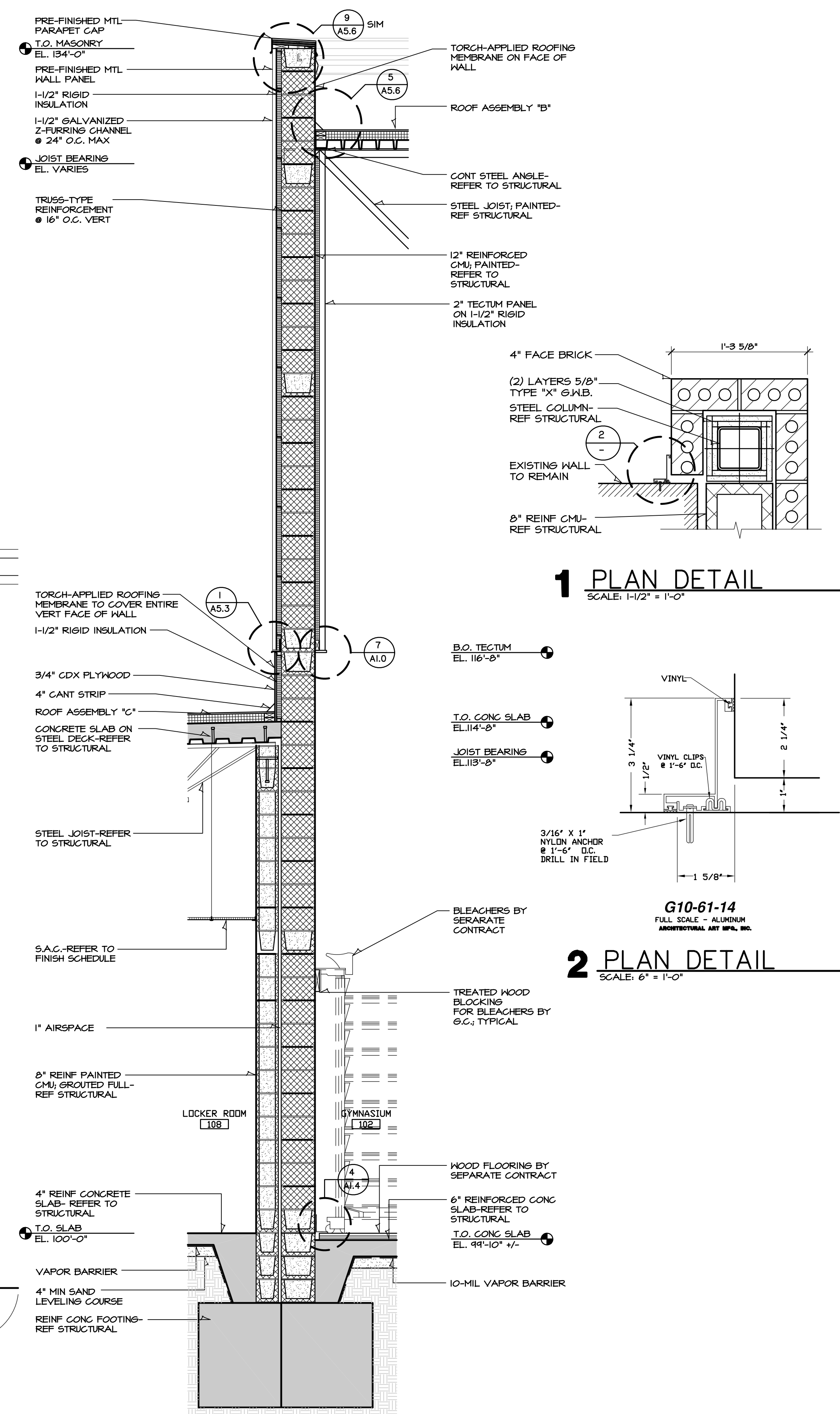


A ALTERNATE 10 ENGLARGED FLOOR PLAN GIRLS LOCKER ROOM
 SCALE 1/4" = 1'-0"



THIS ALTERNATE CONSIDERS THE ADDITIONAL COST TO THE BASE BID IF THE LOCKER ROOMS/FEMA SHELTER IS MOVED 9' +/- TO THE EAST AND A 8" THICK CMU WALL IS CONSTRUCTED AS THE FEMA SHELTER WALL, ALLOWING CONSTRUCTION TO PROCEED WHILE WE WAIT FOR FEMA APPROVAL.

B ALTERNATE 10 ENGLARGED FLOOR PLAN BOYS LOCKER ROOM
 SCALE 1/4" = 1'-0"



1 PLAN DETAIL
 SCALE: 1/2" = 1'-0"

2 PLAN DETAIL
 SCALE: 6" = 1'-0"

REFER TO SHEET A6.2 FOR THE ACCESSORY SYMBOLS USED IN THESE TWO PLANS. SOME OF THE PREVIOUS ADDENDUM ITEMS HAVE BEEN ADDRESSED.

DRAWINGS ISSUED		
NO.	DATE	ITEM ISSUED
2	05/11	ADDENDUM 4
1	04/17	FOR BIDS

COMPUTER DRAWING
 267GH1A605.DWG

DATE: APRIL 2009
 DRAWN BY: [] CHECKED BY: []
 JP TH SF BS JH MH

SHEET
A6.5
 OF 1 SHEETS