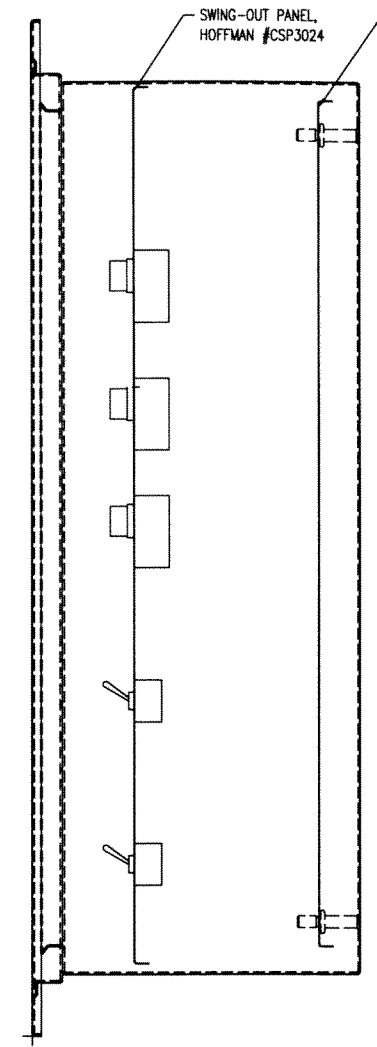
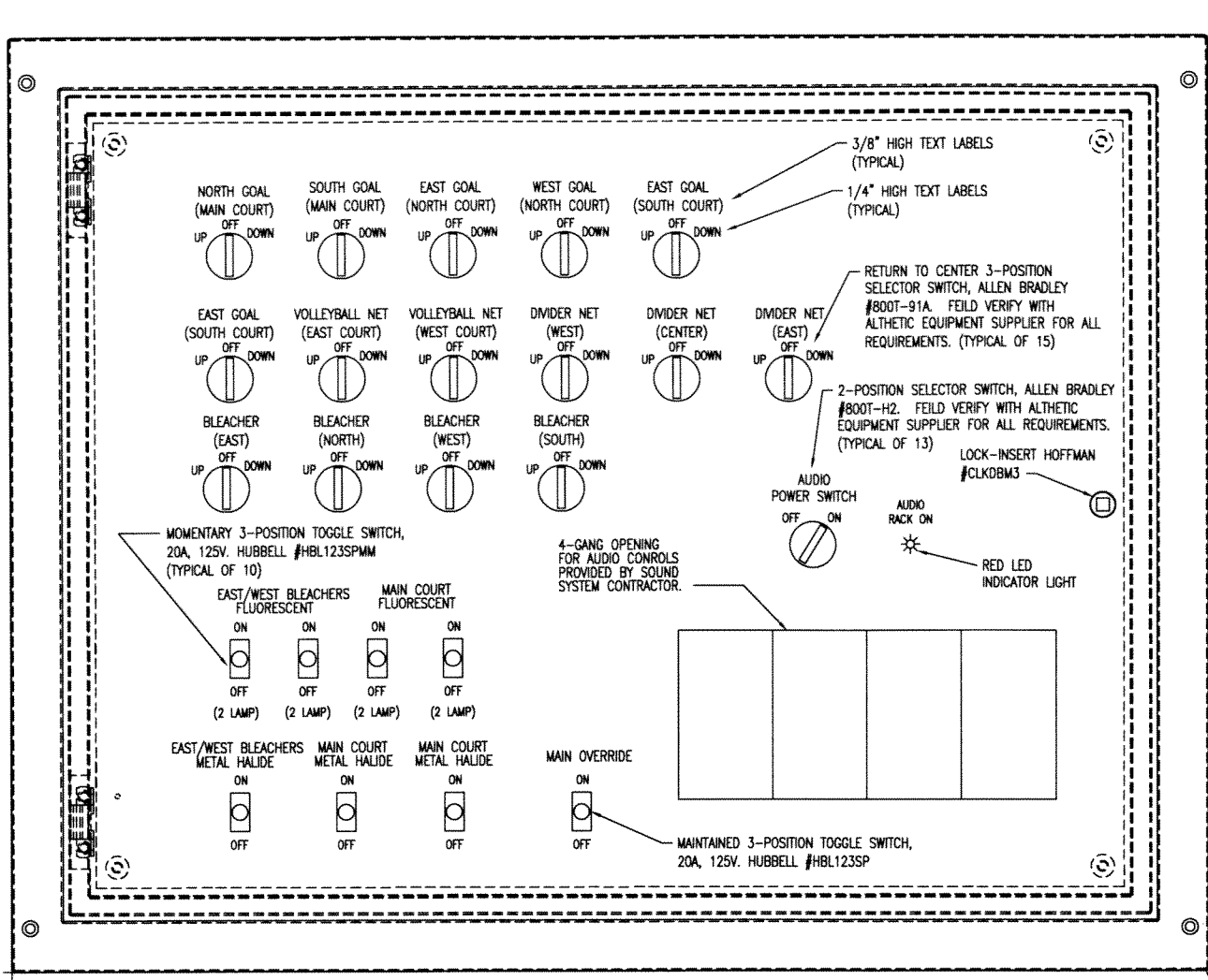




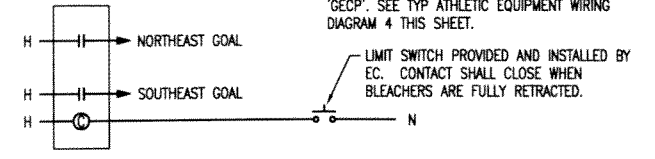
HANNEY & ASSOCIATES, ARCHITECTS
 1726 South Hillside, Wichita, Kansas, 67211
 Phone (316) 853-9966
 Fax (316) 684-1441
 www.haarchitects.com

2009
 GARDEN PLAIN HIGH SCHOOL - NEW GYM
 GARDEN PLAIN, KANSAS
 RENWICK UNIFIED SCHOOL DISTRICT 267

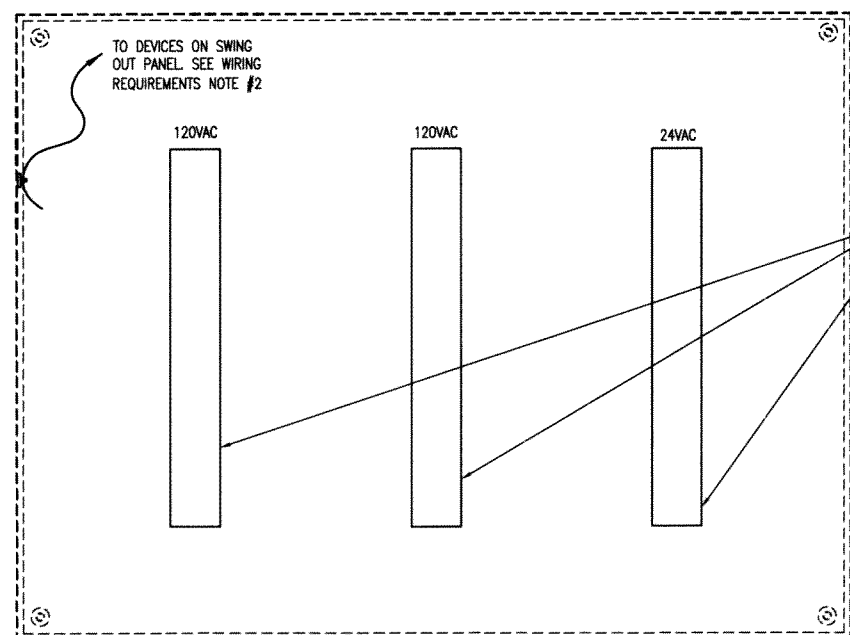
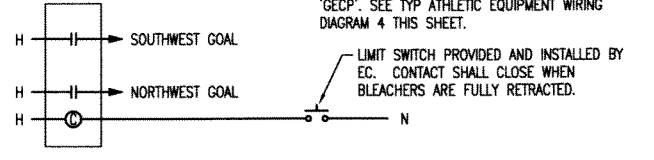


NEMA-1 RECESSED ENCLOSURE WITH LOCK-INSERTS, CONDUCTIVE REAR PANEL AND SWING-OUT MIDDLE PANEL, HOFFMAN #CFM3024B. INSTALL DATA POCKET ON DOOR TO HOLD DRAWING OF PANEL ALONG WITH PART NUMBERS FOR EACH DEVICE WITH-IN. HOFFMAN #ADP1.

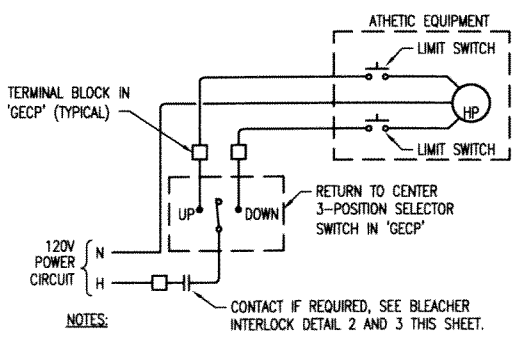
- NOTES:
1. FIELD VERIFY WIRING REQUIREMENTS WITH ATHLETIC EQUIPMENT MANUFACTURER PRIOR TO ROUGH-IN.
 2. COORDINATE LOCATION OF LIMIT SWITCH WITH BLEACHER MANUFACTURE.
 3. INSTALL CONTACTOR ON BACK FIXED PANEL IN 'GECF'. SEE TYP ATHLETIC EQUIPMENT WIRING DIAGRAM 4 THIS SHEET.



- NOTES:
1. FIELD VERIFY WIRING REQUIREMENTS WITH ATHLETIC EQUIPMENT MANUFACTURER PRIOR TO ROUGH-IN.
 2. COORDINATE LOCATION OF LIMIT SWITCH WITH BLEACHER MANUFACTURE.
 3. INSTALL CONTACTOR ON BACK FIXED PANEL IN 'GECF'. SEE TYP ATHLETIC EQUIPMENT WIRING DIAGRAM 4 THIS SHEET.



- TERMINATE ALL FIELD WIRE TO TERMINAL BLOCK. STRANDED WIRE SHALL BE TERMINATED WITH CRIMP CONNECTION, NO EXCEPTION. TERMINAL BLOCK SHALL BE CONSTRUCTED OF THE FOLLOWING COMPONENTS:
- | | |
|------------------------|--------------------------------|
| DIN RAIL | ROCKWELL AUTOMATION #199-DR1 |
| TERMINAL BLOCK (WHITE) | ROCKWELL AUTOMATION #1492-HM1 |
| TERMINAL BLOCK (BLUE) | ROCKWELL AUTOMATION #1492-HM1B |
| TERMINAL BLOCK (GREEN) | ROCKWELL AUTOMATION #1492-HM1C |
| TERMINAL BLOCK (RED) | ROCKWELL AUTOMATION #1492-HM1R |
| END BARRIER | ROCKWELL AUTOMATION #1492-NM36 |
| END ANCHORS | ROCKWELL AUTOMATION #1492-N23 |
- WIRING SCHEME
 POWER (24VDC) DARK BLUE
 SIGNAL (24VDC) RED
 COMMON (24VDC) WHITE/BLACK STRIP
 120V SAME AS BUILDING WIRE
 GROUND GREEN



- NOTES:
1. FIELD VERIFY WIRING REQUIREMENTS WITH ATHLETIC EQUIPMENT MANUFACTURER PRIOR TO ROUGH-IN.
 2. FIELD VERIFY THAT 3-POSITION SWITCH SHALL BE A MOMENTARY SWITCH OR A MAINTAINED SWITCH WITH MANUFACTURER PRIOR TO PURCHASE.

WIRING REQUIREMENTS:

- ALL WIRES AND CABLES BOTH ON FIELD CONNECTION SIDE, ANY JUNCTION BOXES, AND AT ALL PANELS SHALL HAVE PERMANENT MARKER LABELS INSTALLED SUCH AS BRADY PERMASLEEVE TYPE, OR ENGINEER APPROVED EQUAL. LABELED NUMBERS SHALL BE NUMBERED AND MARKED PER CLIENT STANDARDS.
1. ALL CONTROL PANEL WIRING TO BE 16 AWG, (UL 1015, 105°C, TINNED COPPER STRANDED).
 2. INSTALL CABLE MOUNT KIT (PANDUIT #EMSK12-4-12-XO) ON BOTH SIDES OF BREADED SLEEVING (PANDUIT #SE75PSC-CRO). (1) ON PANEL NEAR HINGED SIDE. (1) ON BACK OF PANEL COVER NEAR HINGED SIDE.
 3. ALL WIRING ON BACK SIDE OF PANEL COVER SHALL BE WRAPPED IN SPLIT LOOM (PANDUIT #CLT SERIES). PROVIDE CABLE MOUNT KIT (PANDUIT #EMSK12-4-12-XO) WITH-IN 2" OF START AND STOP OF SPLIT LOOM. MAX SPACING IS 12". WIRE TIE SPLIT LOOM EVERY 6" MAX.

SUBMIT SHOP DRAWINGS THAT INCLUDE THE FOLLOWING.

1. PANEL LAYOUT
2. WIRING DIAGRAM AND OR LADDER DIAGRAM
3. BILL OF MATERIALS

1 GYM EQUIPMENT CONTROL PANEL 'GECF'
 NO SCALE

DRAWINGS ISSUED		
NO.	DATE	ITEM ISSUED
1	5/7	ADDENDUM NO. 3
1	4/7	FOR BIDS

COMPUTER DRAWING

DATE: APRIL 2009
 DRAWN BY: CHECKED BY:
 JLM DLD

SHEET
E1.6
 OF 16 SHEETS