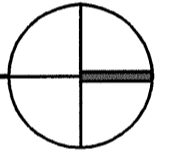
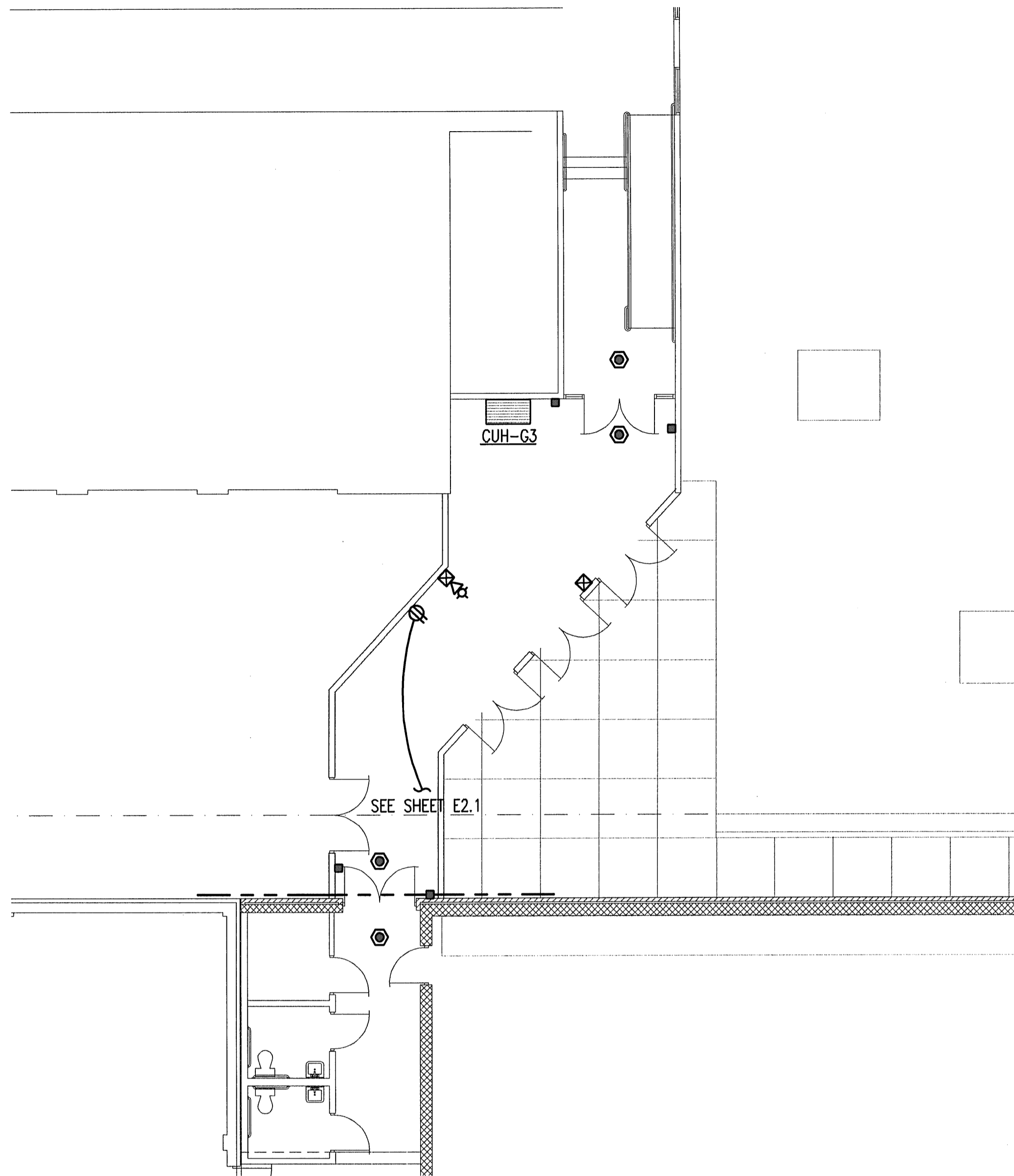
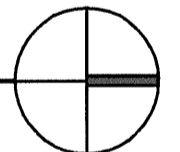
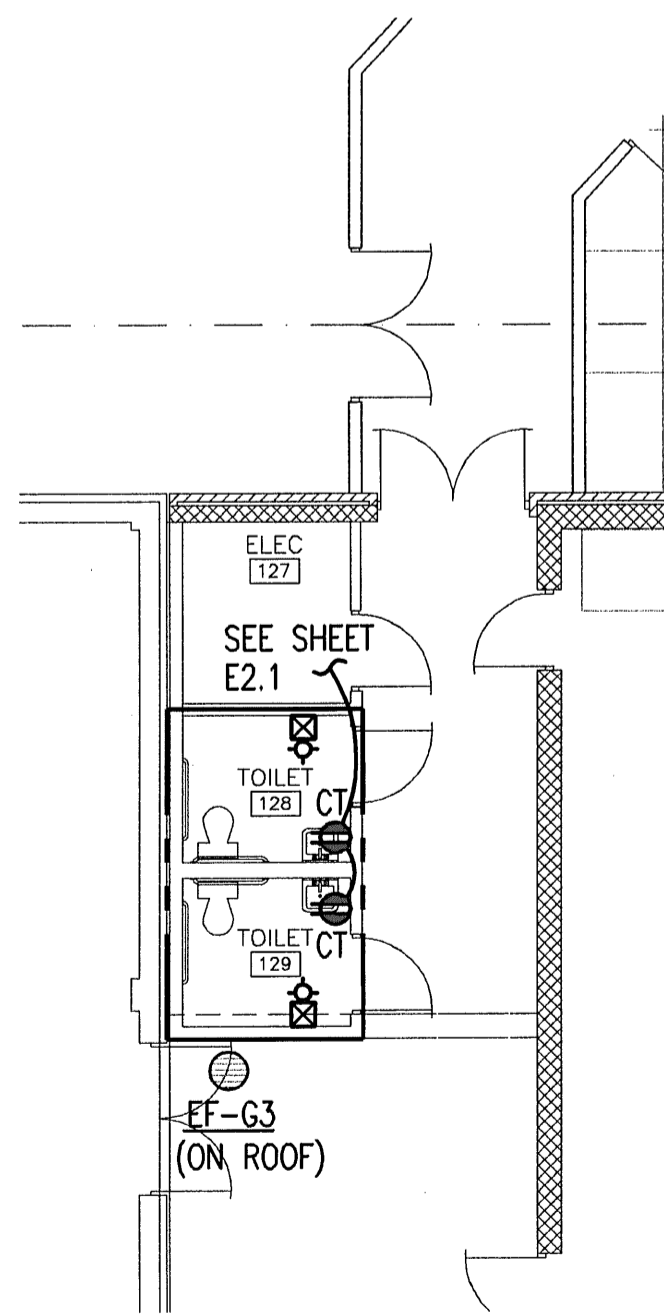
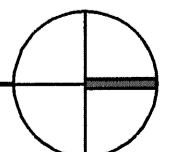


**A** ELECTRICAL POWER/SYSTEMS PLAN -  
ALTERNATE #1  
1/8" = 1'-0" 



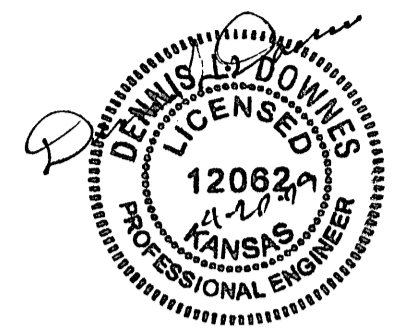
**B** ELECTRICAL POWER/SYSTEMS PLAN -  
ALTERNATE #2  
1/8" = 1'-0" 



**C** ELECTRICAL POWER/SYSTEMS PLAN -  
ALTERNATE #3  
1/8" = 1'-0" 

**PLAN NOTES:**

1. BRANCH CIRCUITS ARE INDICATED AS ONE CIRCUIT HOME RUNS WITH INDIVIDUAL NEUTRALS. A MAXIMUM OF THREE CIRCUITS MAY BE GROUPED IN A SINGLE CONDUIT. WHERE MULTIPLE CIRCUITS ARE LOCATED IN THE SAME RACEWAY, JUNCTION BOX OR ENCLOSURE, NEUTRALS SHALL BE MARKED OR LABELED TO INDICATE WHICH CIRCUIT THEY ARE ASSOCIATED WITH. SEE SPECIFICATION SECTION 16120 FOR ADDITIONAL INFORMATION.
2. A GROUND CONDUCTOR SIZED PER N.E.C. ARTICLE 250 IS REQUIRED IN ALL CONDUITS.
3. FOR CONNECTION REQUIREMENTS TO MECHANICAL UNITS, SEE MECHANICAL EQUIPMENT CONNECTION SCHEDULE.
4. ALL PENETRATIONS IN THE RATED WALLS AND CEILINGS SHALL BE SEALED WITH A MATERIAL CAPABLE OF PREVENTING THE PASSAGE OF FLAMES AND HOT GASSES. THE SEALANT SHALL HAVE A T-RATING OF ONE HOUR.
5. ALL PIPING, CONDUIT, AND OUTLET BOXES (ELECTRIC, TELEPHONE, COMPUTER, ETC.) IN THE RATED WALLS OR CEILING SHALL BE CONSTRUCTED OF NON-COMBUSTIBLE MATERIAL.
6. OUTLET BOXES (ELECTRIC, TELEPHONE, COMPUTER, ETC.) SHALL BE LIMITED TO TWO OUTLET BOXES PER STUD SPACE. OUTLET BOXES ON OPPOSITE SIDES OF THE RATED WALLS SHALL BE SEPARATED BY A HORIZONTAL DISTANCE OF 24 INCHES.



HANNEY & ASSOCIATES, ARCHITECTS  
1726 South Hillside, Wichita, Kansas, 67211  
Phone (316) 683-8865  
Fax (316) 684-1441  
www.haarchitects.com

**2009**  
 GARDEN PLAIN HIGH SCHOOL - NEW GYM  
 GARDEN PLAIN, KANSAS  
 RENWICK UNIFIED SCHOOL DISTRICT 267

| DRAWINGS ISSUED |      |             |
|-----------------|------|-------------|
| NO.             | DATE | ITEM ISSUED |
| 1               | 4/17 | FOR BIDS    |

COMPUTER DRAWING

DATE: APRIL 2004  
 DRAWN BY: JLM  
 CHECKED BY: DLD

SHEET

**E2.2**

OF 16 SHEETS