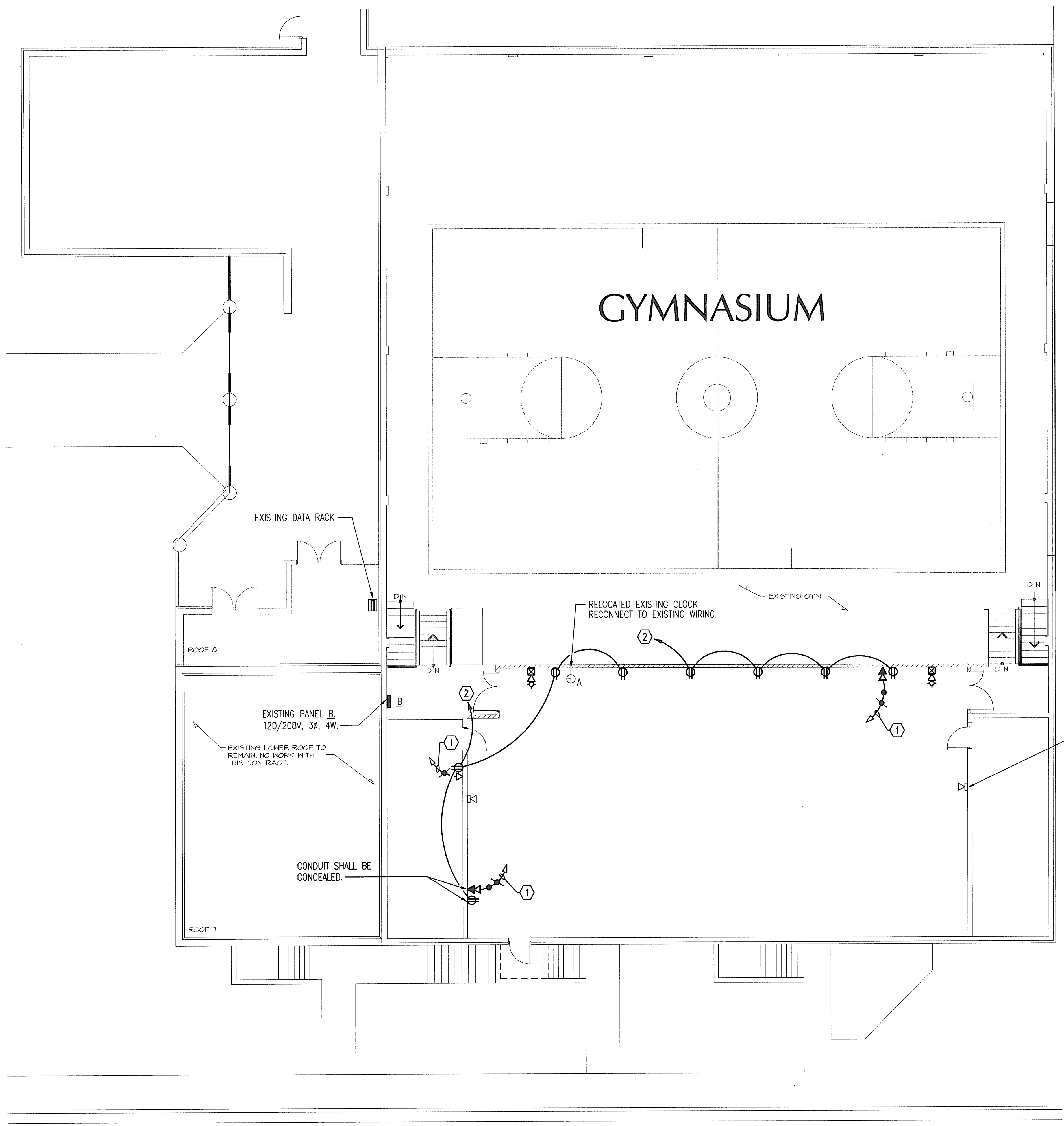


Saved 04-20-2009 8:27:28 AM by JLL
 Plot Scale 1:36 04-20-2009 8:41:55 AM
 E:\2009\08004\02\08004-02-E23-MAN LEVEL_A13 by JLL



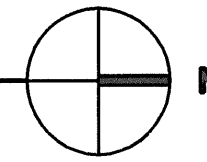
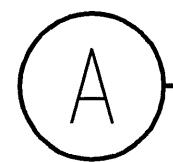
STORAGE

E

GYMNASIUM

ELECTRICAL POWER/SYSTEMS PLAN - ALTERNATE #4

1/8" = 1'-0"

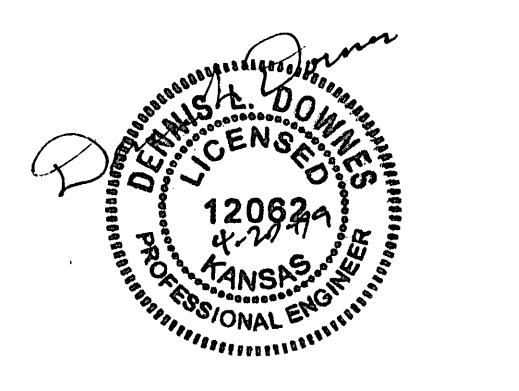


PLAN NOTES:

- BRANCH CIRCUITS ARE INDICATED AS ONE CIRCUIT HOME RUNS WITH INDIVIDUAL NEUTRALS. A MAXIMUM OF THREE CIRCUITS MAY BE GROUPED IN A SINGLE CONDUIT. WHERE MULTIPLE CIRCUITS ARE LOCATED IN THE SAME RACEWAY, JUNCTION BOX OR ENCLOSURE, NEUTRALS SHALL BE MARKED OR LABELED TO INDICATE WHICH CIRCUIT THEY ARE ASSOCIATED WITH. SEE SPECIFICATION SECTION 16120 FOR ADDITIONAL INFORMATION.
- A GROUND CONDUCTOR SIZED PER N.E.C. ARTICLE 250 IS REQUIRED IN ALL CONDUITS.
- FOR CONNECTION REQUIREMENTS TO MECHANICAL UNITS, SEE MECHANICAL EQUIPMENT CONNECTION SCHEDULE.
- ALL PENETRATIONS IN THE RATED WALLS AND CEILINGS SHALL BE SEALED WITH A MATERIAL CAPABLE OF PREVENTING THE PASSAGE OF FLAMES AND HOT GASSES. THE SEALANT SHALL HAVE A T-RATING OF ONE HOUR.
- ALL PIPING, CONDUIT, AND OUTLET BOXES (ELECTRIC, TELEPHONE, COMPUTER, ETC.) IN THE RATED WALLS OR CEILING SHALL BE CONSTRUCTED OF NON-COMBUSTIBLE MATERIAL.
- OUTLET BOXES (ELECTRIC, TELEPHONE, COMPUTER, ETC.) SHALL BE LIMITED TO TWO OUTLET BOXES PER STUD SPACE. OUTLET BOXES ON OPPOSITE SIDES OF THE RATED WALLS SHALL BE SEPARATED BY A HORIZONTAL DISTANCE OF 24 INCHES.

KEYED NOTES:

- ROUTE CABLING TO EXISTING DATA RACK.
- CIRCUIT TO EXISTING WESTINGHOUSE PANEL 'B'. PROVIDE 120V, 20A, 1P. BREAKERS TO MATCH THE EXISTING BREAKERS IN THE PANEL. UPDATE THE PANEL SCHEDULE ACCORDINGLY.



HANNEY & ASSOCIATES, ARCHITECTS
 1726 South Hillside, Wichita, Kansas, 67211
 Phone (316) 683-8966
 Fax (316) 684-1441
 www.haarchitects.com

2009
 GARDEN PLAIN HIGH SCHOOL - NEW GYM
 GARDEN PLAIN, KANSAS
 RENWICK UNIFIED SCHOOL DISTRICT 267

DRAWINGS ISSUED	
NO.	DATE
1	4/17 FOR BIDS

COMPUTER DRAWING

DATE: APRIL 2009
 DRAWN BY: JLM
 CHECKED BY: DLD

SHEET
E2.3

OF 16 SHEETS

Professional Engineering Consultants, P.A.
 303 S. TOPEKA • WICHITA, KANSAS 67202 • 316-262-2691 • FAX 316-262-3003
 www.pnci.com