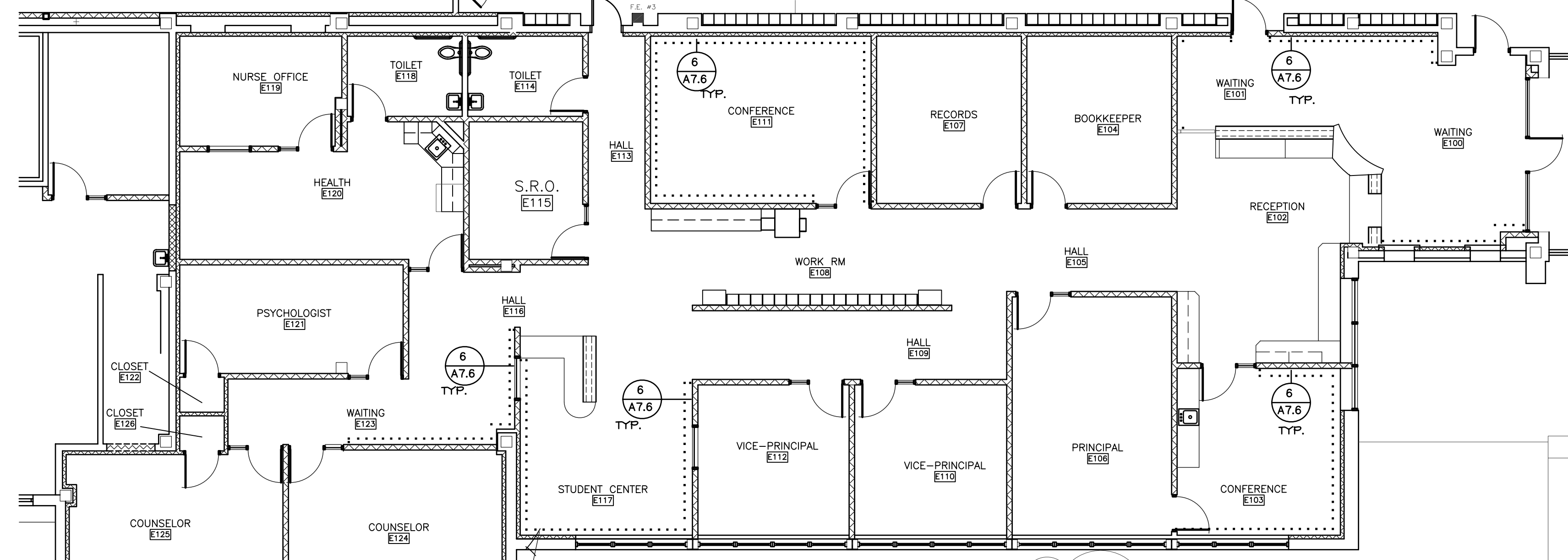


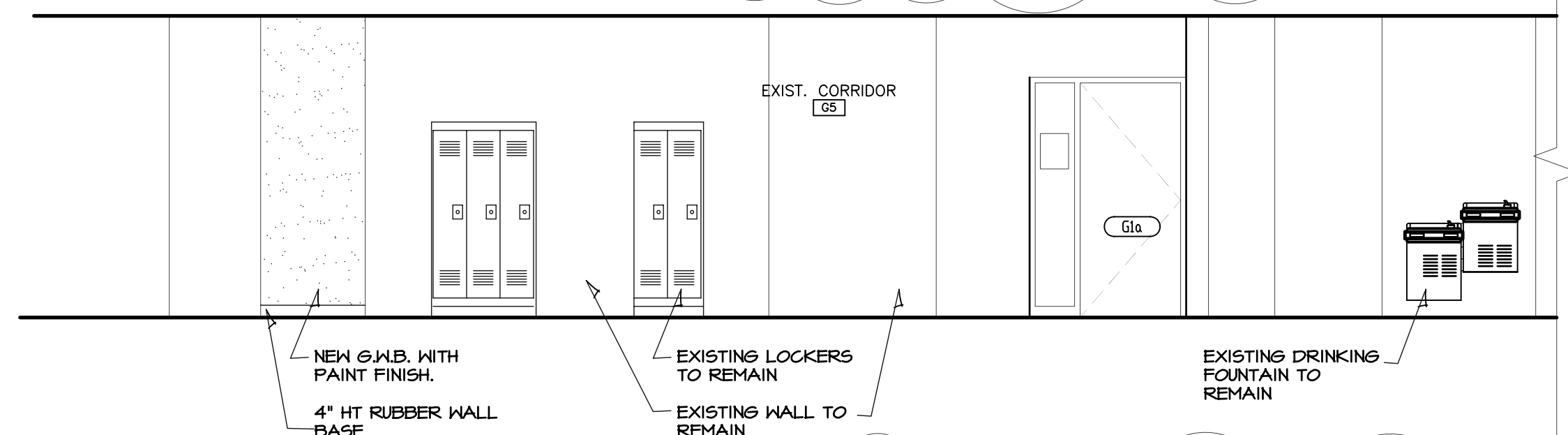


**HAMNEY & ASSOCIATES, ARCHITECTS**  
 1726 South Hillside, Wichita, Kansas, 67211  
 Phone (316) 683-8985  
 Fax (316) 684-1441

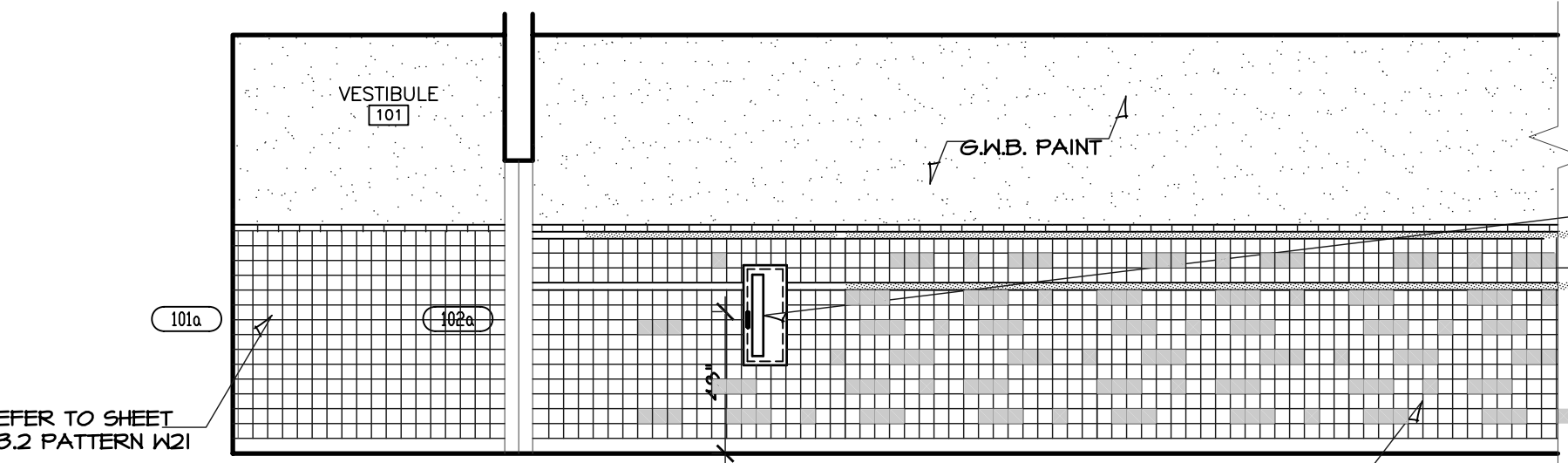
**HADLEY MIDDLE SCHOOL**  
 WICHITA PUBLIC SCHOOLS  
 PHASE 1B- PROJECT #09-25012  
 WICHITA, KANSAS  
 UNIFIED SCHOOL DISTRICT #259



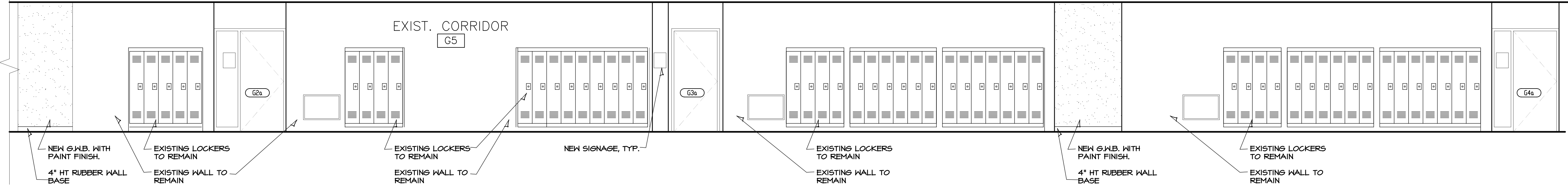
**B** BASE BID CHAIR RAIL LOCATION  
 SCALE 1/8" = 1'-0"



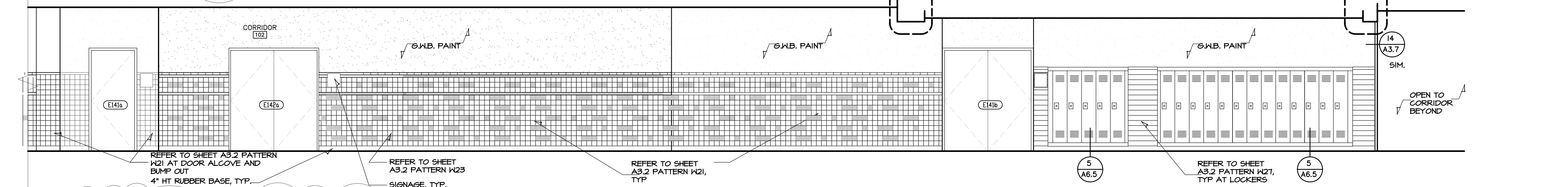
**1** PARTIAL ELEVATION EXISTING CORRIDOR G5  
 SCALE 1/4" = 1'-0"



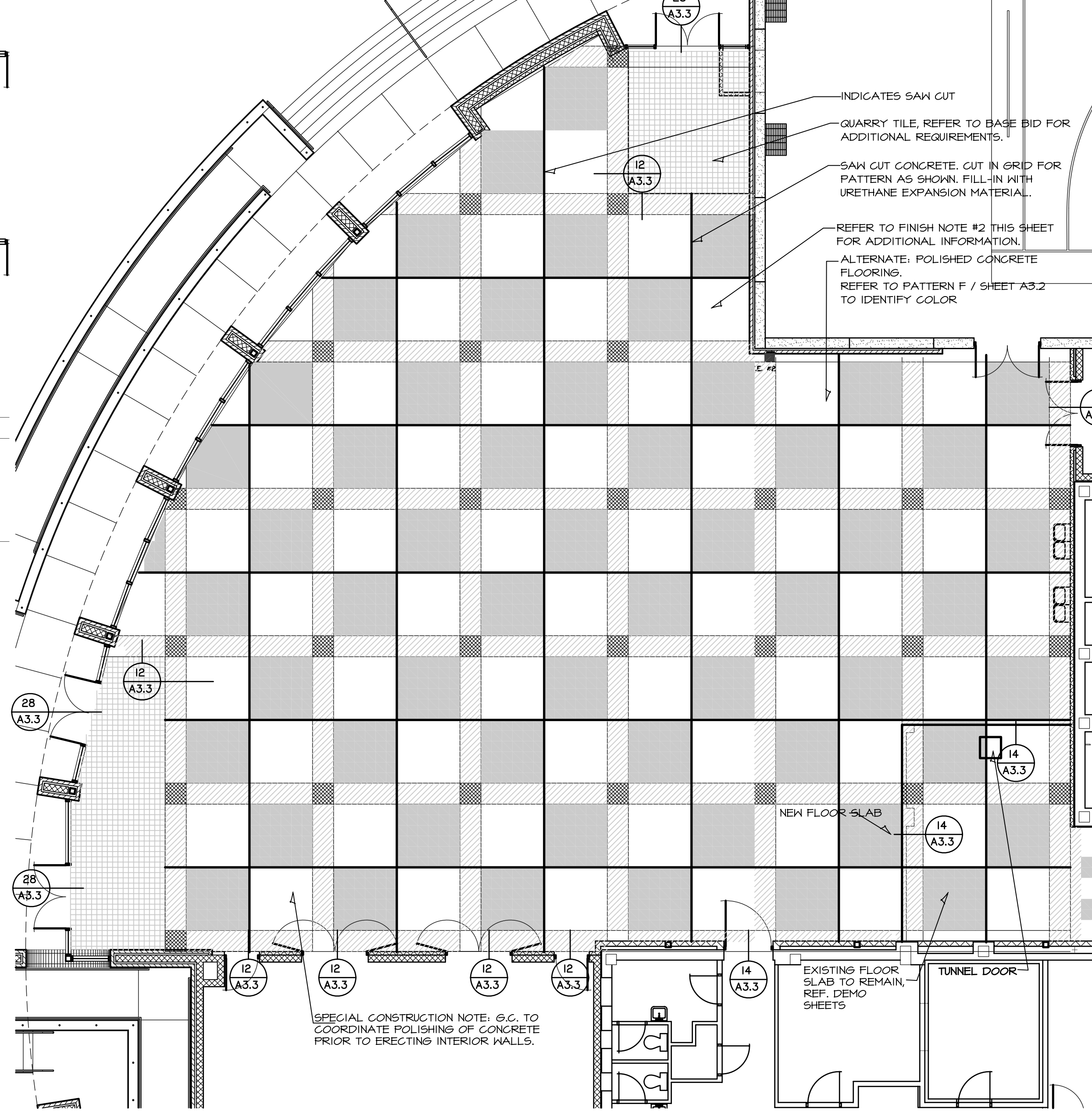
**2** PARTIAL ELEVATION CORRIDOR 102  
 SCALE 1/4" = 1'-0"



**3** PARTIAL ELEVATION EXISTING CORRIDOR G5  
 SCALE 1/4" = 1'-0"



**4** PARTIAL ELEVATION CORRIDOR 102  
 SCALE 1/4" = 1'-0"



**A** ALTERNATE 4 COMMONS AREA  
 SCALE 1/8" = 1'-0"

INDICATES SAW CUT  
 QUARRY TILE, REFER TO BASE BID FOR ADDITIONAL REQUIREMENTS.  
 SAW CUT CONCRETE, CUT IN GRID FOR PATTERN AS SHOWN, FILL-IN WITH URETHANE EXPANSION MATERIAL.  
 REFER TO FINISH NOTE #2 THIS SHEET FOR ADDITIONAL INFORMATION.  
 ALTERNATE, POLISHED CONCRETE FLOORING. REFER TO PATTERN F / SHEET A3.2 TO IDENTIFY COLOR

SPECIAL CONSTRUCTION NOTE: G.C. TO COORDINATE POLISHING OF CONCRETE PRIOR TO ERECTING INTERIOR WALLS.

DRAWINGS ISSUED		
NO.	DATE	ITEM ISSUED
7	4/28/10	ADDENDUM 4
6	4/27/10	ADDENDUM 3
5	4/01/10	ISSUED FOR BID
4	3/08/10	100% REVIEW
3	2/12/10	50% REVIEW
2	12/21/09	DESIGN DEVELOPMENT
1	10/2/09	SCHEMATIC REVIEW

COMPUTER DRAWING  
 25494D15.DWG

DATE: APRIL 16, 2010  
 DRAWN BY: JP  
 CHECKED BY: MRH

SHEET  
**A1.5**  
 OF - SHEETS