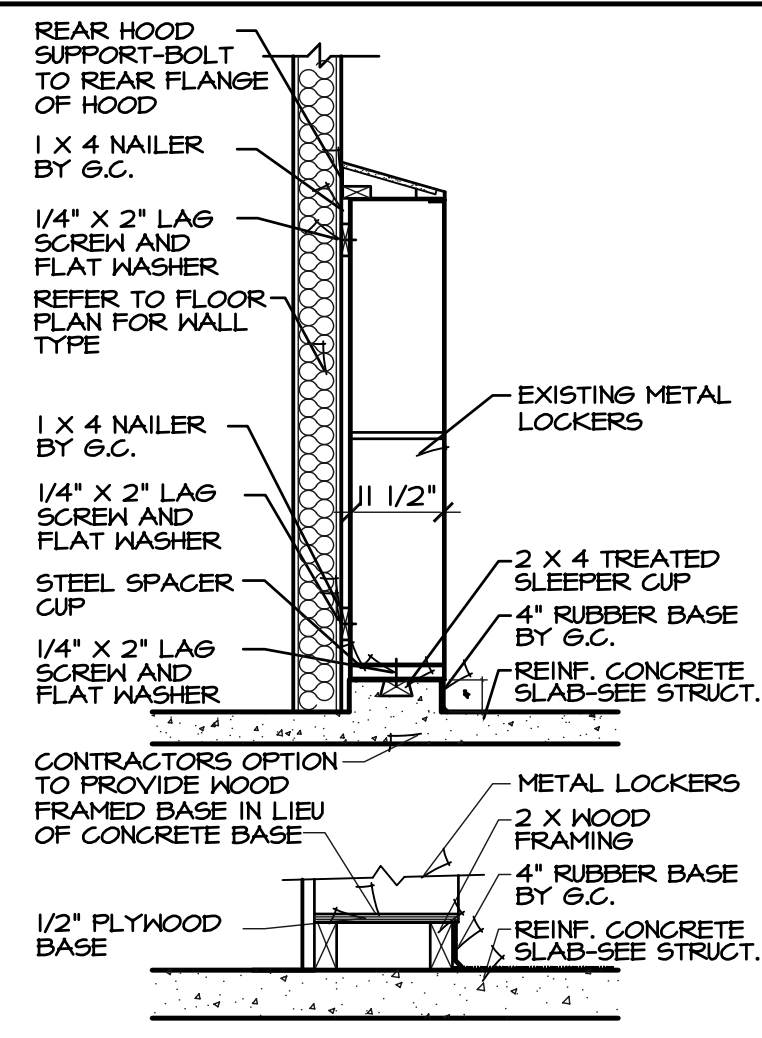
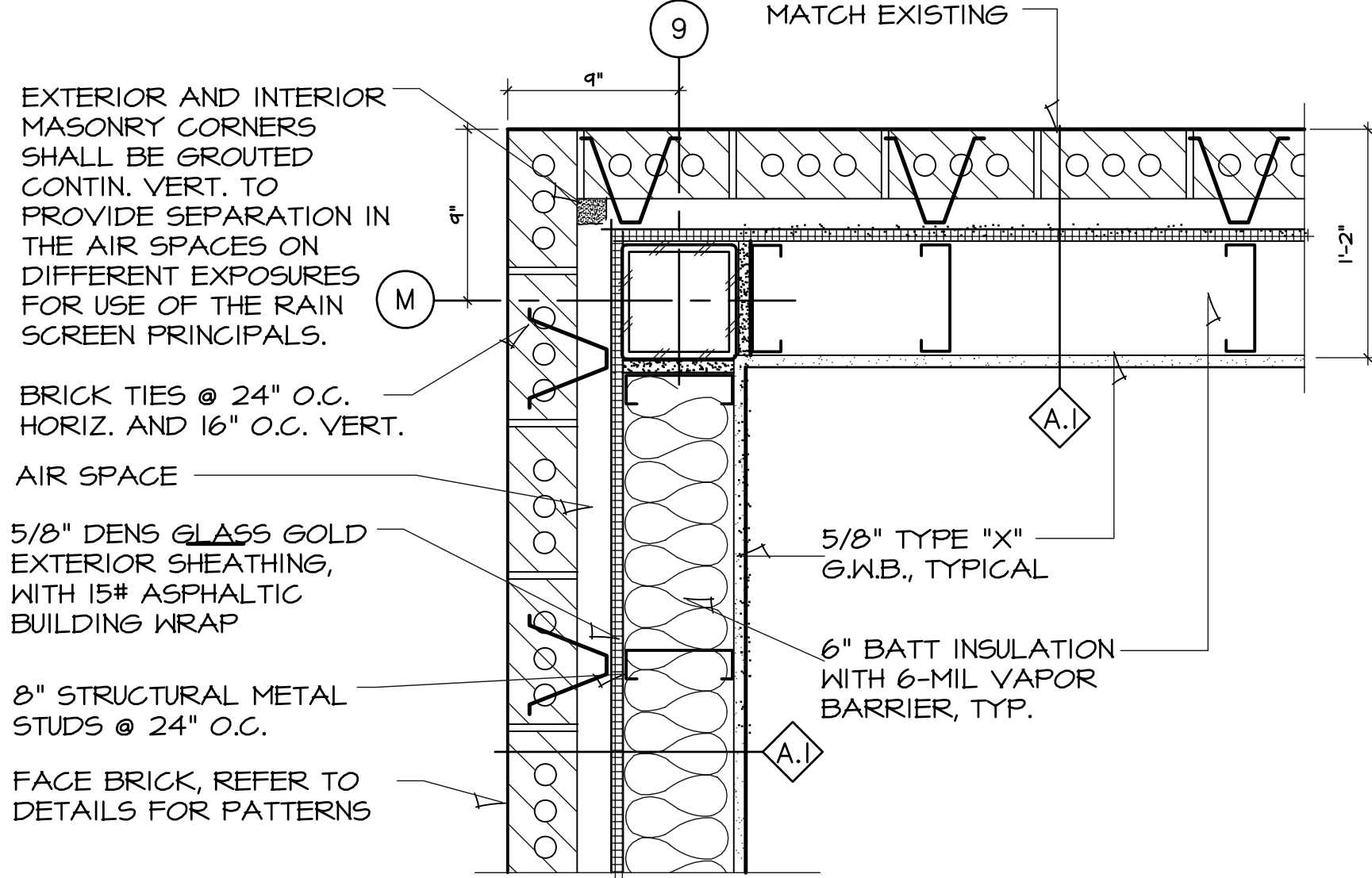


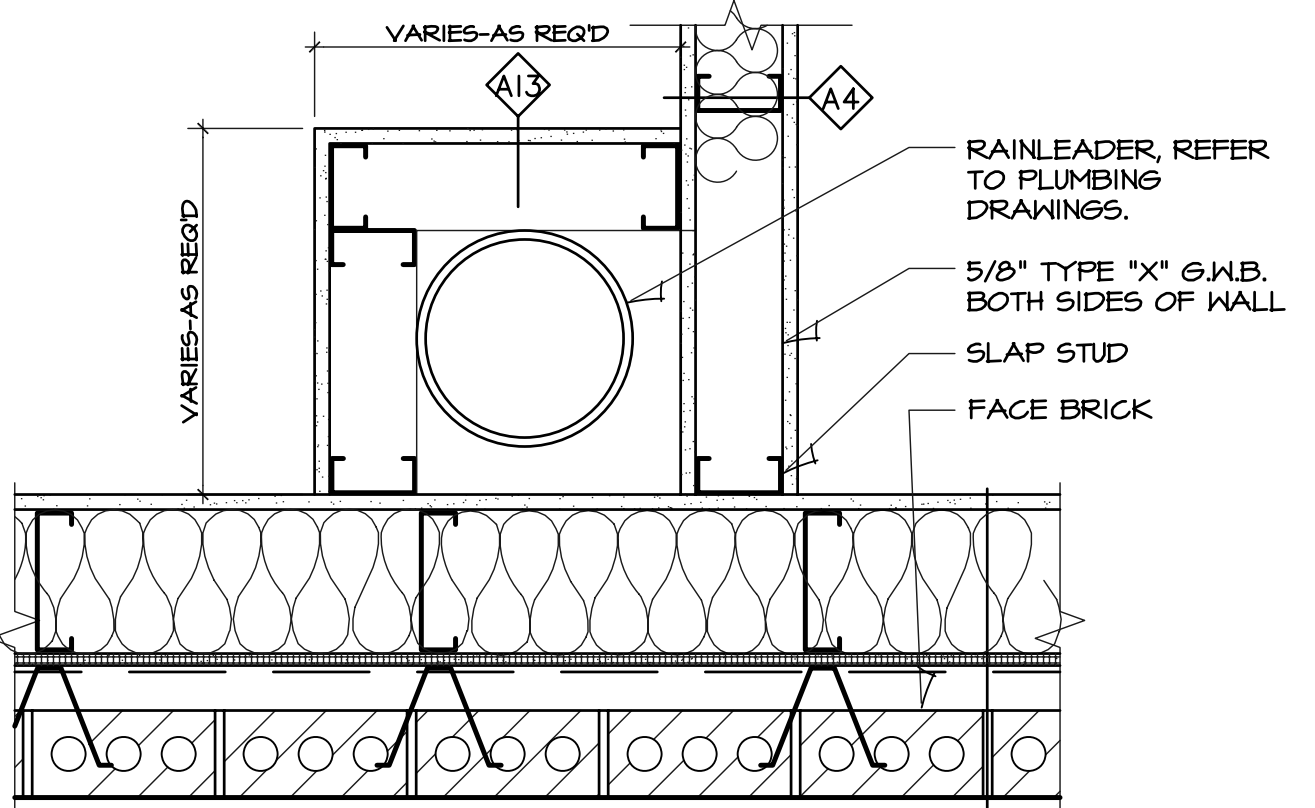
GENERAL CONTRACTOR TO PROVIDE NAILERS AND BASE, AND RE-LOCATE LOCKERS. G.C. TO INSURE THE BASE IS LEVEL, AND HILL LEVEL THE FLOOR TO BE PARALLEL.



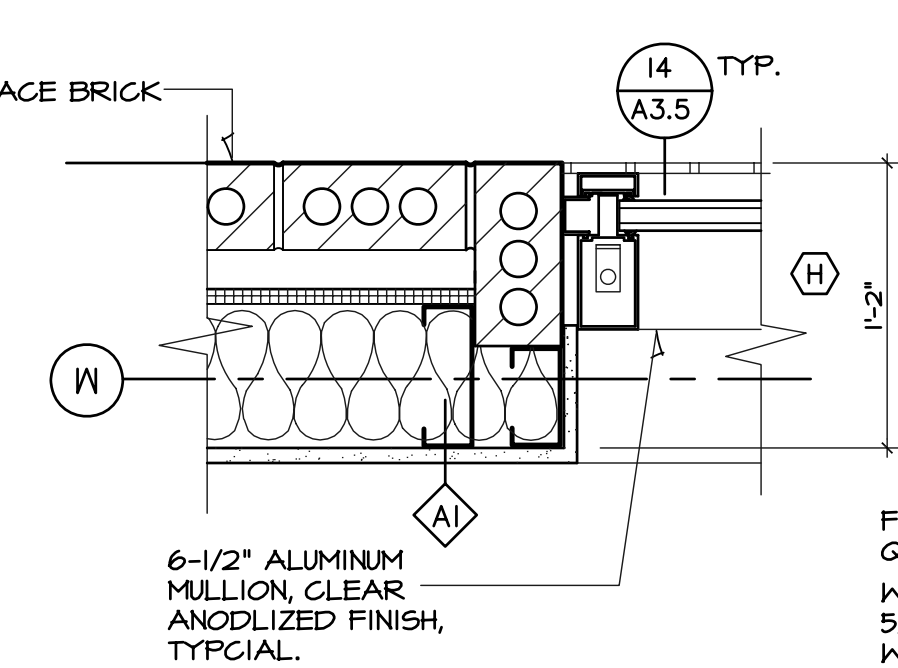
1 HALL LOCKER
SCALE: 1/2" = 1'-0"



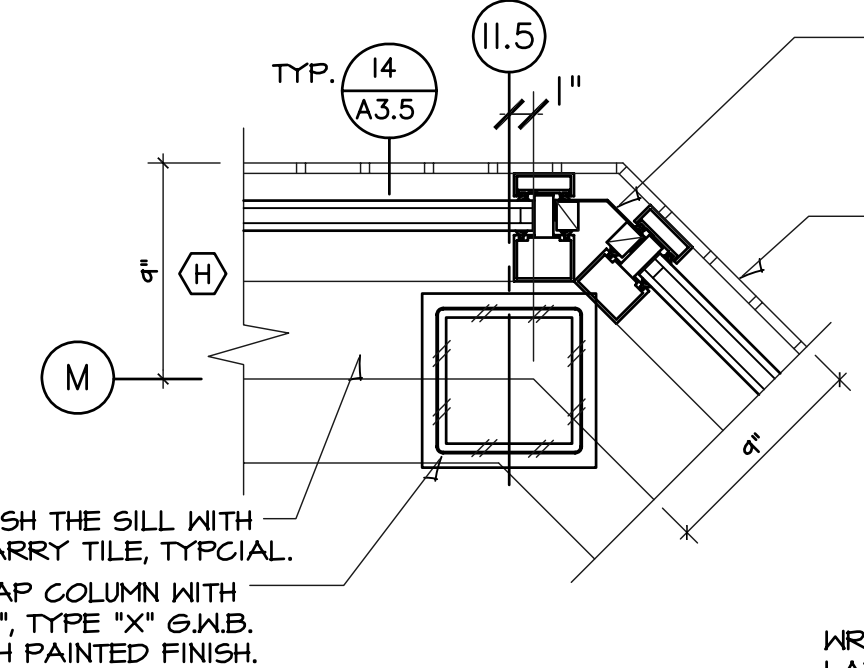
3 PLAN DETAIL
SCALE: 1 1/2" = 1'-0"



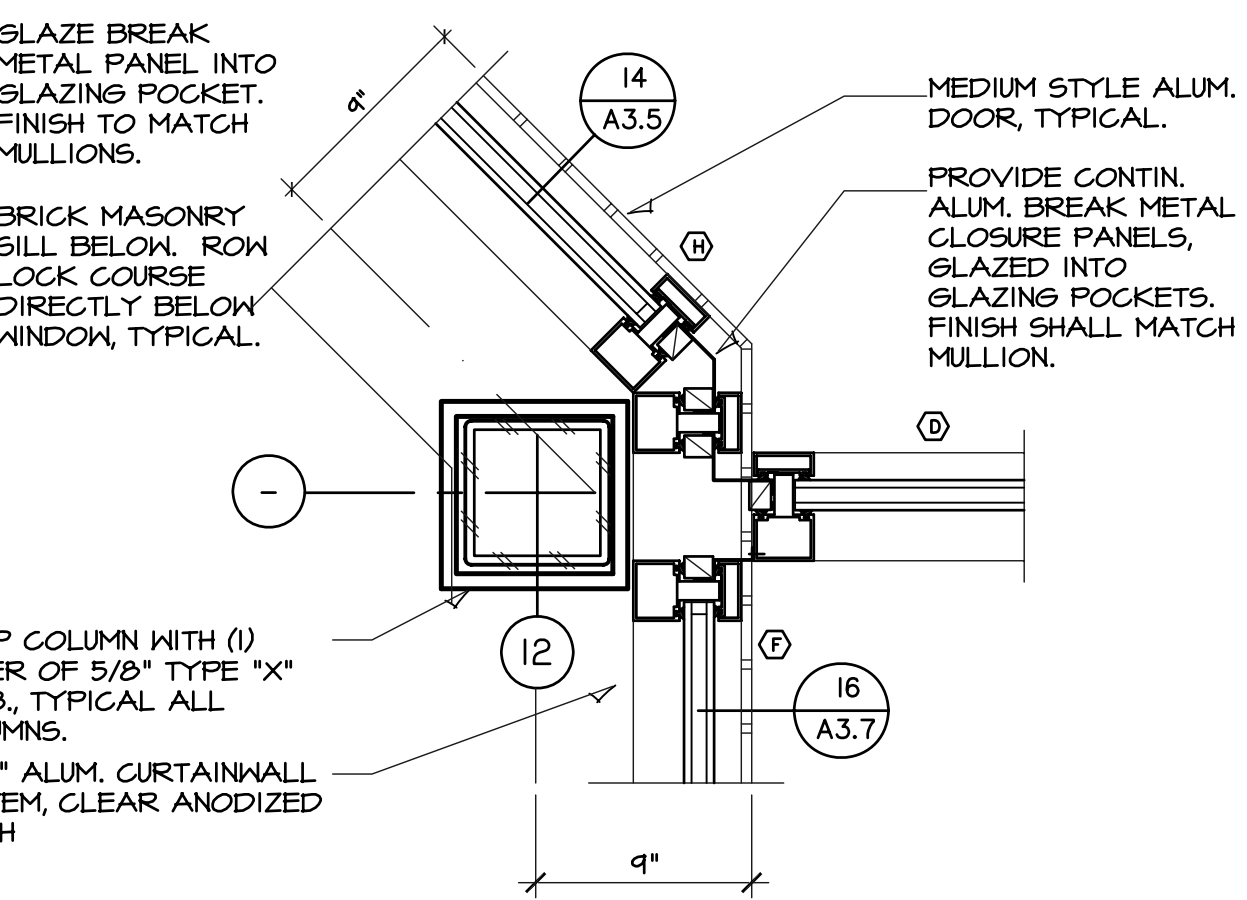
2 RAIN LEADER CHASE
SCALE: 1 1/2" = 1'-0"



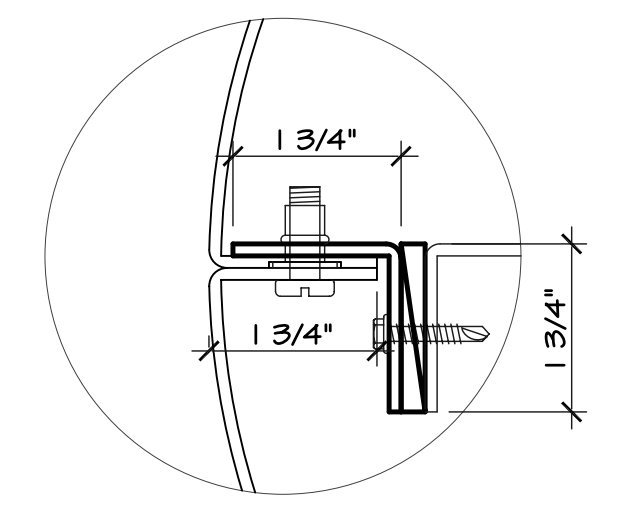
4 WINDOW JAMB
SCALE: 1 1/2" = 1'-0"



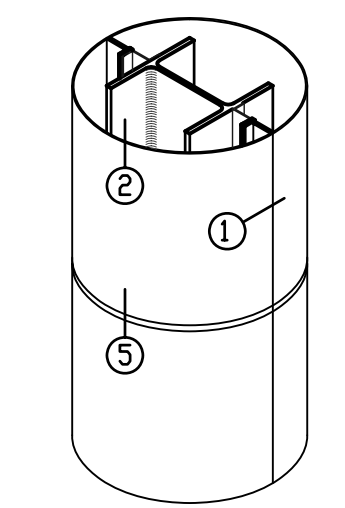
5 WINDOW JAMB
SCALE: 1 1/2" = 1'-0"



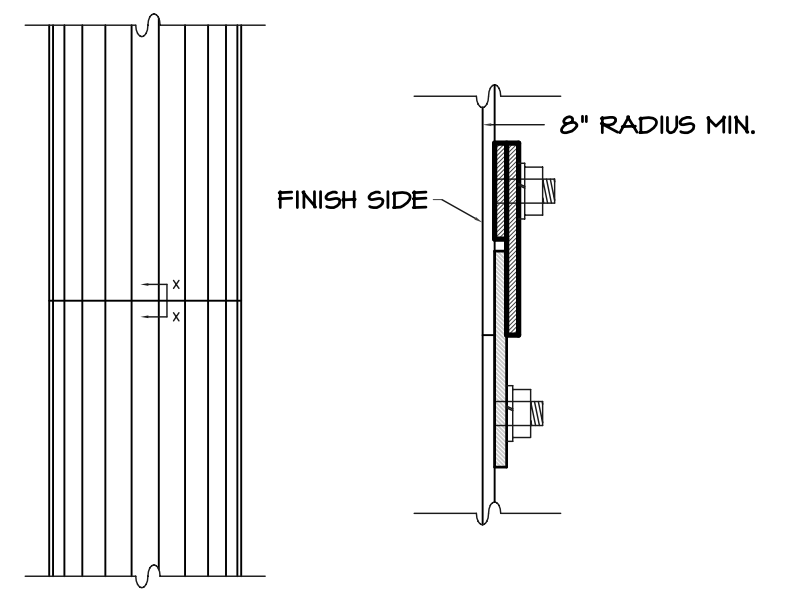
6 WINDOW JAMB
SCALE: 1 1/2" = 1'-0"



7 JOINT DETAIL
SCALE: N.T.S.

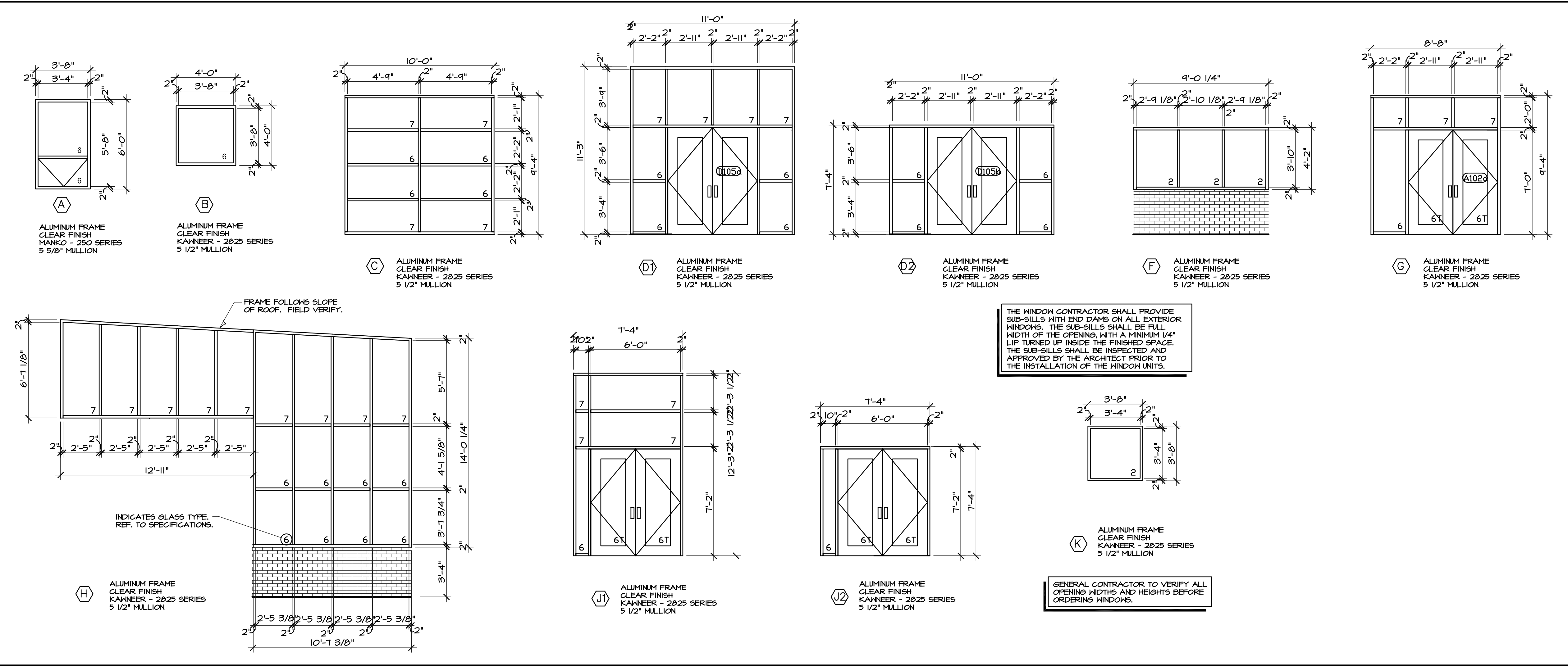


8 COLUMN COVER
SCALE: N.T.S.



9 COLUMN DETAIL
SCALE: N.T.S.

ALUMINUM WINDOW SCHEDULE



HANNEY & ASSOCIATES, ARCHITECTS
1726 South Hillside, Wichita, Kansas, 67211
Phone (316) 863-8985
Fax (316) 684-1441
www.hanneyarchitects.com

2008
 ST. MARK'S CHARTER SCHOOL REMODEL
 ST. MARK'S, KANSAS
 RENWICK UNIFIED SCHOOL DISTRICT 267

DRAWINGS ISSUED		
NO.	DATE	ITEM ISSUED
3	10/17	ADDENDUM - 1
2	9/30	ISSUED FOR BIDS
1	9/26	REVIEW

COMPUTER DRAWING
26108A31.DWG

DATE: SEPTEMBER 2008
DRAWN BY: J.P., T.H., C.H., B.S.
CHECKED BY: M.H.

SHEET
A3.6
OF 1 SHEETS