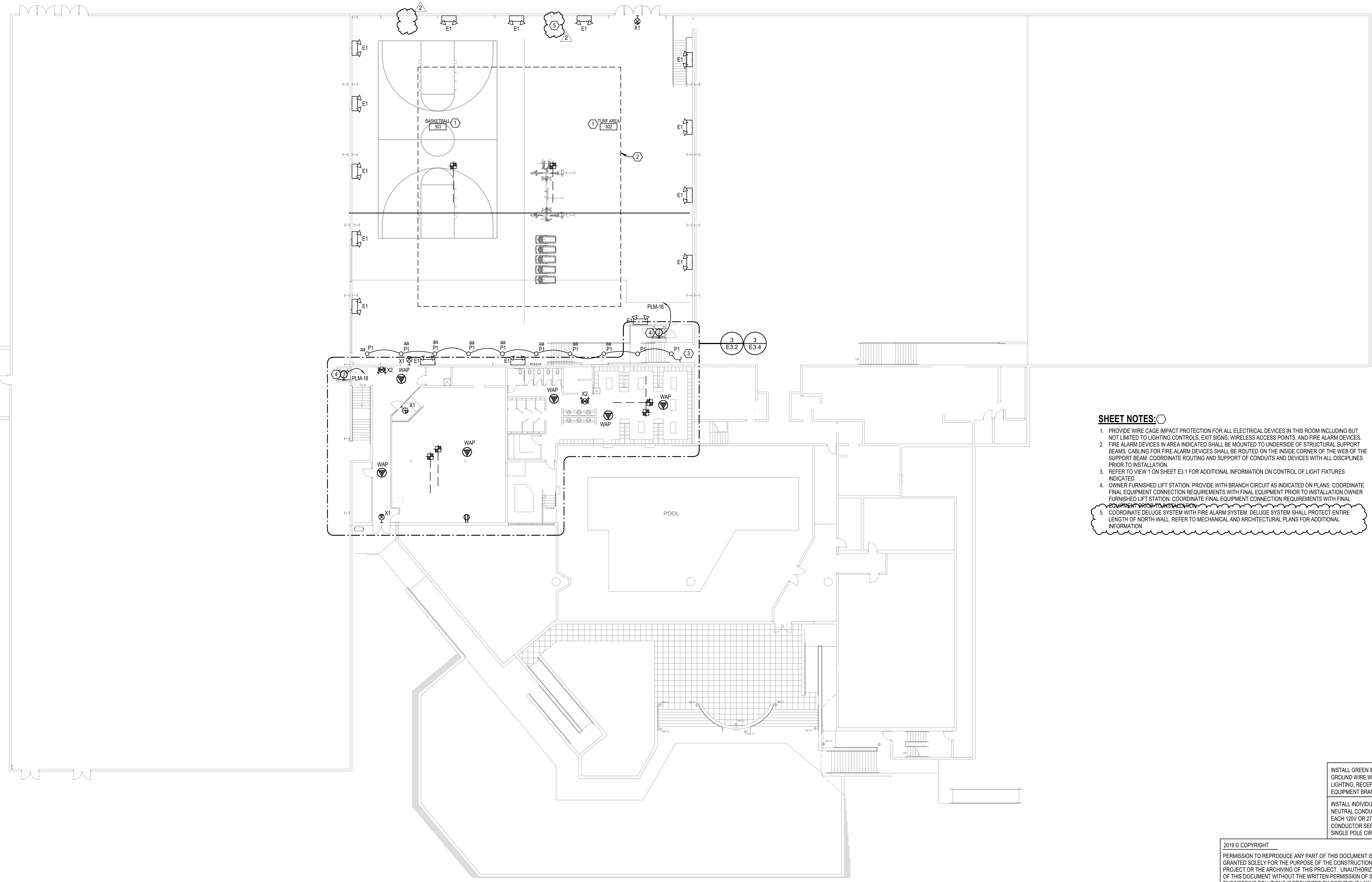


HANNAY & ASSOCIATES, ARCHITECTS  
 1726 South Hillside, Wichita, Kansas, 67211  
 Phone: (316) 683-8965  
 Fax: (316) 684-1441

2019 GENESIS HEALTH WESTROADS  
 1212 NORTH 162ND STREET  
 OMAHA, NE 68114



- SHEET NOTES:**
1. PROVIDE WIRE CAGE IMPACT PROTECTION FOR ALL ELECTRICAL DEVICES IN THIS ROOM INCLUDING BUT NOT LIMITED TO LIGHTING CONTROLS, EXIT SIGNS, WIRELESS ACCESS POINTS, AND FIRE ALARM DEVICES.
  2. FIRE ALARM DEVICES IN AREA INDICATED SHALL BE MOUNTED TO UNDERSIDE OF STRUCTURAL SUPPORT BEAMS. CABLING FOR FIRE ALARM DEVICES SHALL BE ROUTED ON THE INSIDE CORNER OF THE WEB OF THE SUPPORT BEAM. COORDINATE ROUTING AND SUPPORT OF CONDUITS AND DEVICES WITH ALL DISCIPLINES PRIOR TO INSTALLATION.
  3. REFER TO VIEW 1 ON SHEET E3.1 FOR ADDITIONAL INFORMATION ON CONTROL OF LIGHT FIXTURES INDICATED.
  4. OWNER FURNISHED LIFT STATION. PROVIDE WITH BRANCH CIRCUIT AS INDICATED ON PLANS. COORDINATE FINAL EQUIPMENT CONNECTION REQUIREMENTS WITH FINAL EQUIPMENT PRIOR TO INSTALLATION. OWNER FURNISHED LIFT STATION. COORDINATE FINAL EQUIPMENT CONNECTION REQUIREMENTS WITH FINAL EQUIPMENT PRIOR TO INSTALLATION.
  5. COORDINATE DELUGE SYSTEM WITH FIRE ALARM SYSTEM. DELUGE SYSTEM SHALL PROTECT ENTIRE LENGTH OF NORTH WALL. REFER TO MECHANICAL AND ARCHITECTURAL PLANS FOR ADDITIONAL INFORMATION.

DRAWINGS ISSUED		
NO.	DATE	ITEM ISSUED

2 10/04/19 ADDENDUM #2  
 1 04/22/19 ISSUED FOR BID

COMPUTER DRAWING

INSTALL GREEN INSULATED GROUND WIRE WITH LIGHTING, RECEPTACLE AND EQUIPMENT BRANCH CIRCUITS.

INSTALL INDIVIDUAL (DEDICATED) NEUTRAL CONDUCTORS FOR EACH 120V OR 277V PHASE CONDUCTOR SERVED FROM A SINGLE POLE CIRCUIT BREAKER

2019 © COPYRIGHT  
 PERMISSION TO REPRODUCE ANY PART OF THIS DOCUMENT IS HEREBY GRANTED SOLELY FOR THE PURPOSE OF THE CONSTRUCTION OF THE PROJECT OR THE ARCHIVING OF THIS PROJECT. UNAUTHORIZED USE OF THIS DOCUMENT WITHOUT THE WRITTEN PERMISSION OF SPECIALIZED ENGINEERING SOLUTIONS IS PROHIBITED BY COPYRIGHT LAW.

DO NOT SCALE DRAWING. ALL DIMENSIONS AND CLEARANCES SHALL BE VERIFIED FROM APPROPRIATE SOURCES. ALL WORK SHALL BE COORDINATED PRIOR TO INSTALLATION. SEE SPECIFICATIONS.

10360 Ellison Circle  
 Omaha, NE 68134  
 Phone: 402.991.5520  
 www.specializedeng.com

**A OVERALL THIRD LEVEL FLOOR PLAN - ELECTRICAL**  
 1/16" = 1'-0"



DATE: APRIL 2019  
 DRAWN BY: EJR/NLE  
 CHECKED BY: TJH

SHEET

**E1.3**

OF SHEETS

BIM 360/18435 - Genesis Health Club Westroads/18435\_Genesis\_Westroads\_SES\_2017.rvt  
 10/8/2019 5:16:55 PM