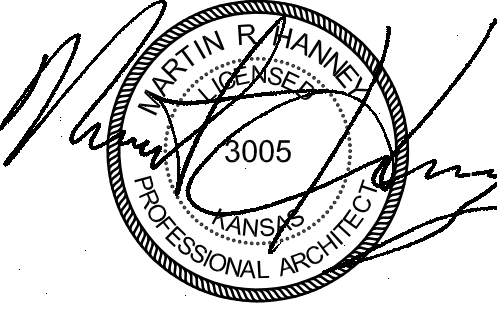
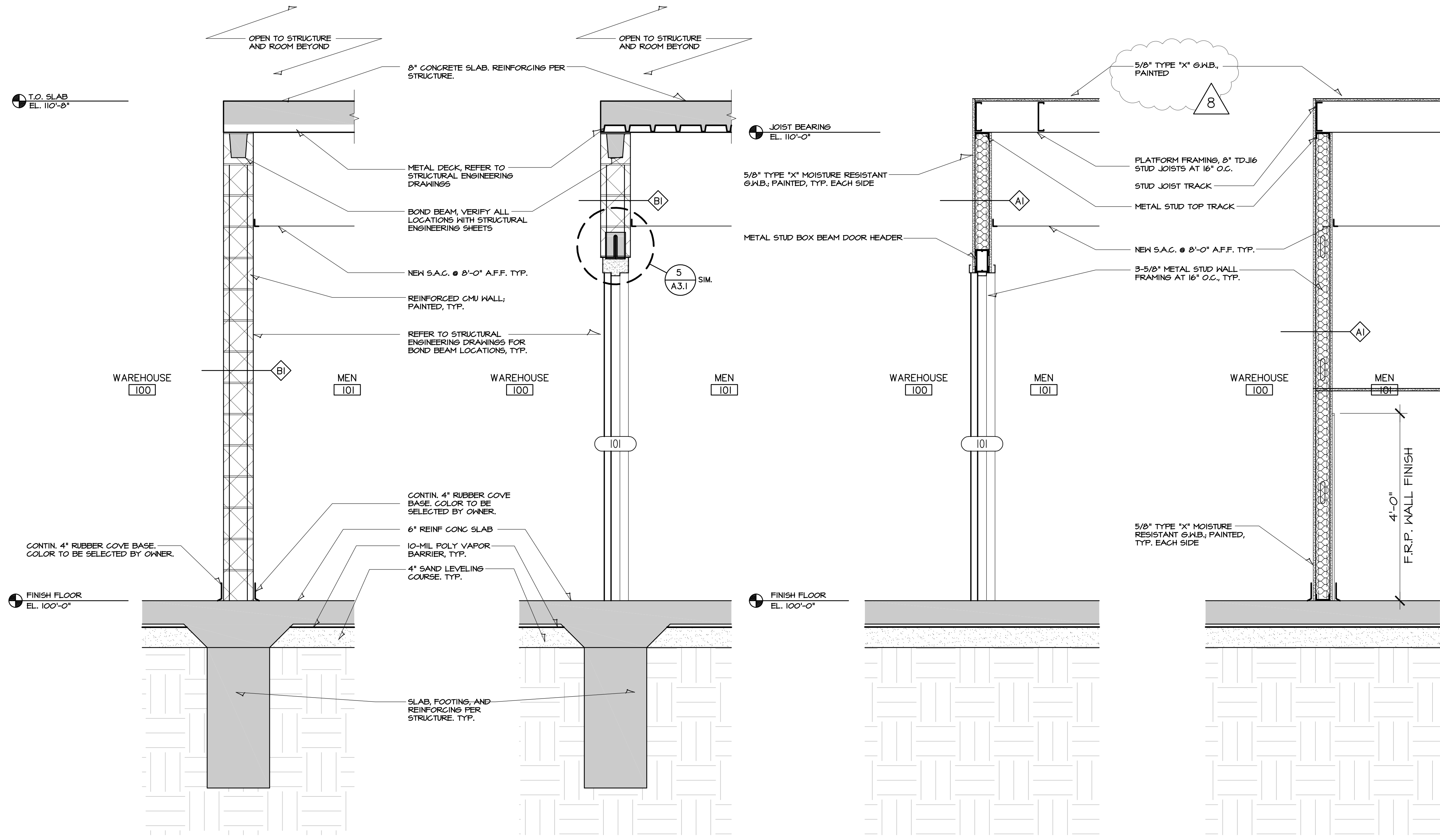


SPACE LEFT INTENTIONALLY BLANK



8/13/19

HANNEY & ASSOCIATES, ARCHITECTS
 1726 South Hillside, Wichita, Kansas, 67211
 Phone (316) 683-8965
 Fax (316) 684-1441
 www.haarchitects.com



1 ALTERNATE #1
WALL SECTION
 SCALE: 1/2" = 1'-0"

2 ALTERNATE #1
WALL SECTION
 SCALE: 1/2" = 1'-0"

3 **WALL SECTION**
 SCALE: 1/2" = 1'-0"

4 **WALL SECTION**
 SCALE: 1/2" = 1'-0"

2019
BOOT BARN
WAREHOUSE EXPANSION
 4950 South Laura, Wichita, Kansas 67216

DRAWINGS ISSUED		
NO.	DATE	ITEM ISSUED
8	8/13	PLAN REVIEW REV. 2
7	7/15	PLAN REVIEW REV. 1
6	6/25	PLAN REVIEW
5	6/14	100% REVIEW
4	6/05	PLAN CHANGE
3	5/28	PLAN CHANGE
2	4/26	REVIEW
1	1/24	REVIEW

COMPUTER DRAWING
 BB_A502.dwg

DATE: JUNE, 2019
 DRAWN BY: MH, BS, CH
 CHECKED BY: MRH

SHEET
A5.2
 OF 1 SHEETS