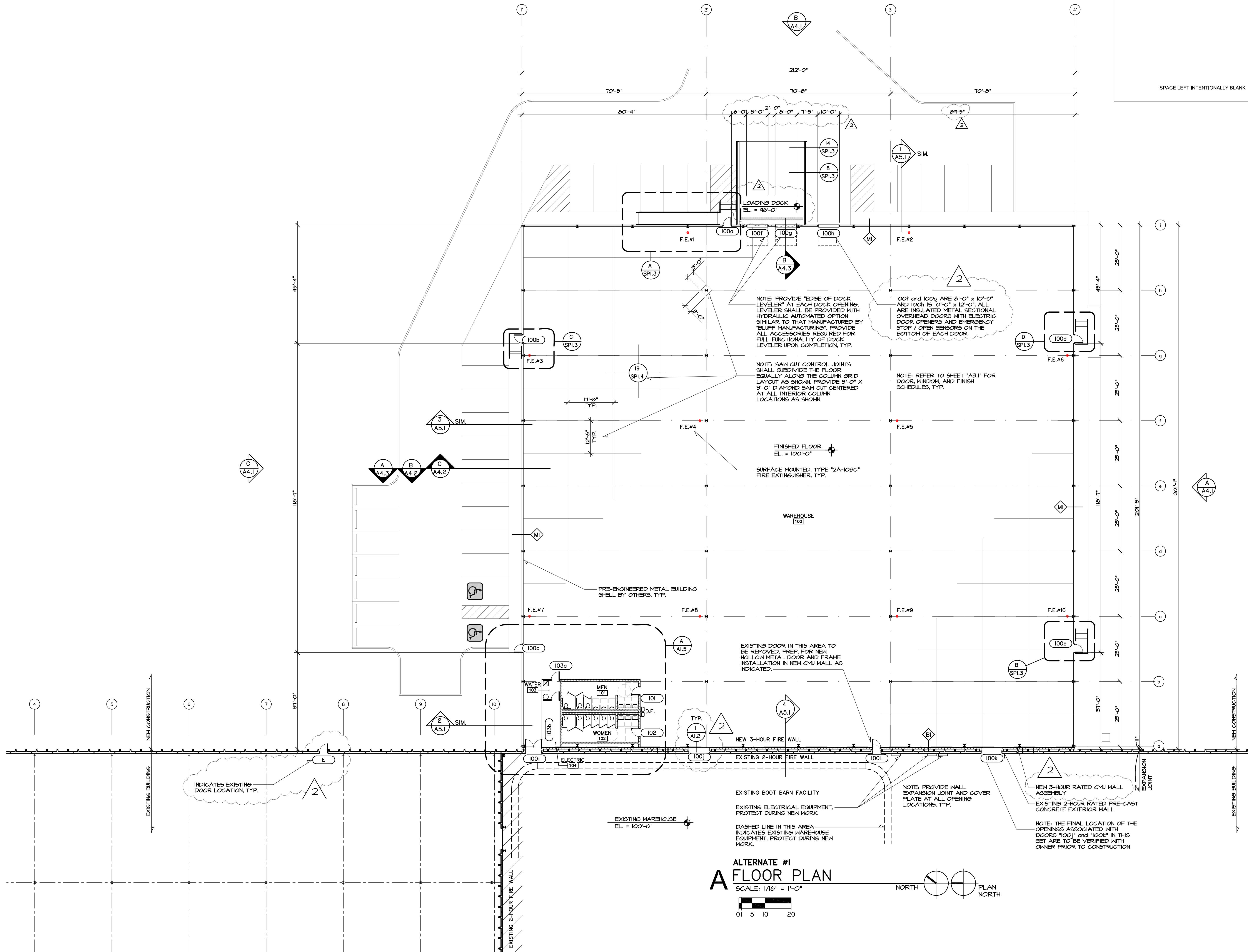


HANNEY & ASSOCIATES, ARCHITECTS  
 1726 South Hillside, Wichita, Kansas, 67211  
 Phone (316) 883-8965  
 Fax (316) 884-1441  
 www.hanneyarchitects.com

**2019  
 BOOT BARN  
 WAREHOUSE EXPANSION**  
 4950 South Laura, Wichita, Kansas 67216



SPACE LEFT INTENTIONALLY BLANK

DRAWINGS ISSUED		
NO.	DATE	ITEM ISSUED
4	8/22	ADDENDUM #2
7	7/15	PLAN REVIEW REV. 1
6	6/25	100% REVIEW
5	6/14	100% REVIEW
4	6/05	PLAN CHANGE
3	5/28	PLAN CHANGE
2	4/26	REVIEW
1	1/24	REVIEW

COMPUTER DRAWING  
 BB\_A103.dwg

DATE: JUNE, 2019  
 DRAWN BY: MH, BS, CH  
 CHECKED BY: MRH

SHEET  
**A1.3**  
 OF 1 SHEETS

ALTERNATE #1  
**A FLOOR PLAN**  
 SCALE: 1/16" = 1'-0"  
 NORTH  
 PLAN NORTH