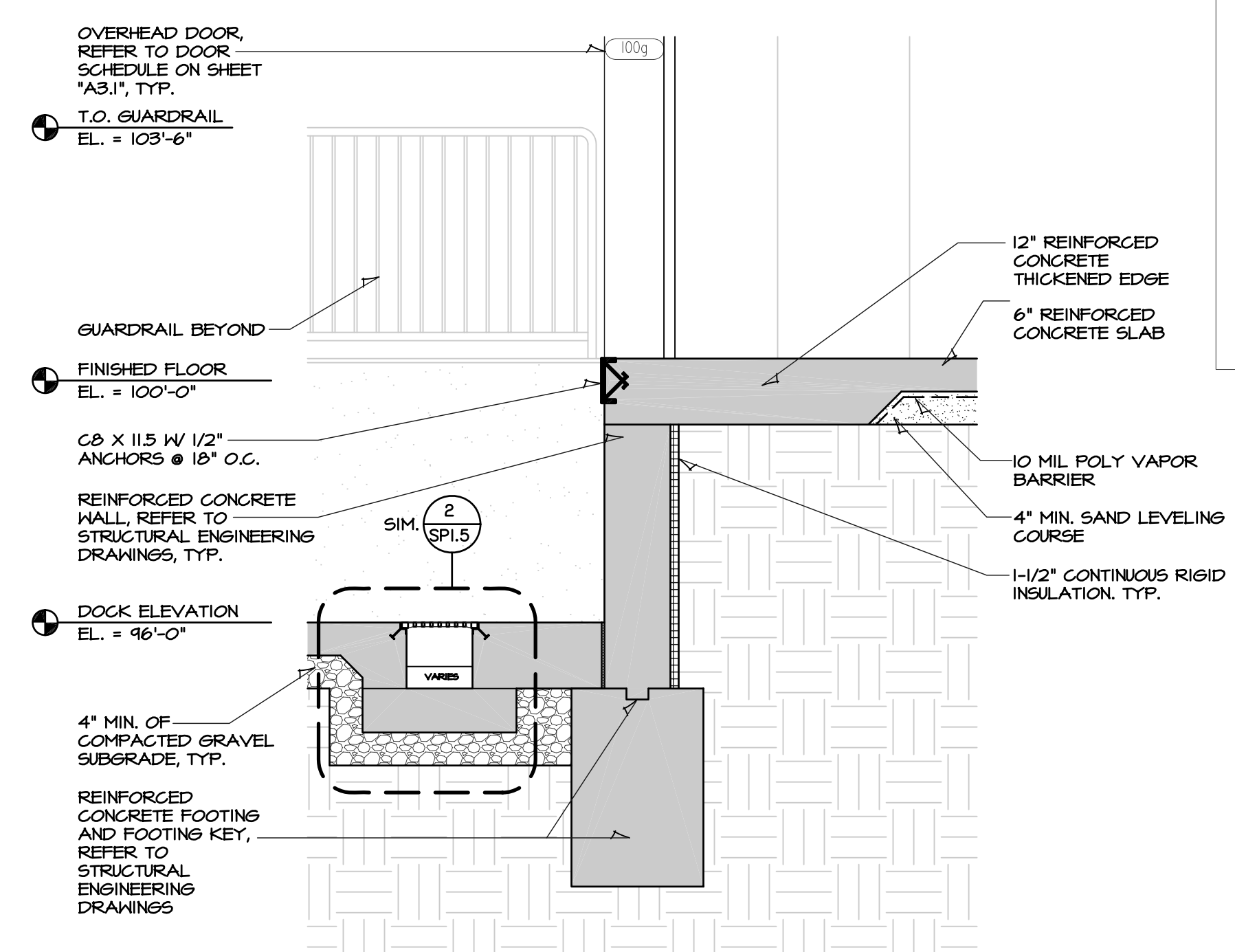


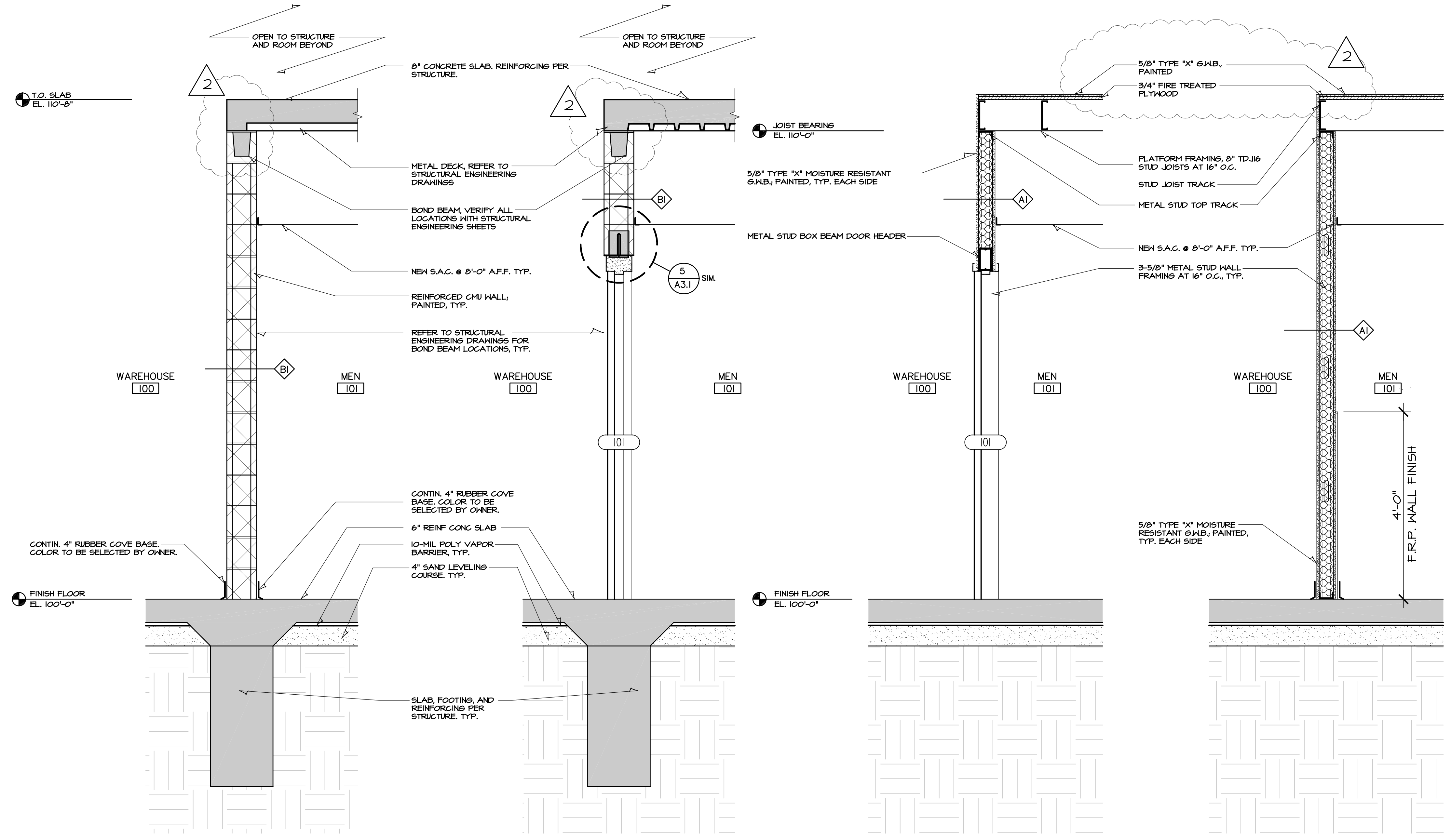
HANNEY & ASSOCIATES, ARCHITECTS  
 1726 South Hillside, Wichita, Kansas, 67211  
 Phone (316) 883-8965  
 Fax (316) 884-1441  
 www.hanneyarchitects.com

**2019 BOOT BARN WAREHOUSE EXPANSION**  
 4950 South Laura, Wichita, Kansas 67216

DOCK LEVELERS AND DOCK SEALS ARE REQUIRED FOR BOTH DOCKS 100F AND 100G. THIS EQUIPMENT IS NOT SHOWN ON THIS ELEVATION, BUT SHALL BE PROVIDED AND INSTALLED AS DEFINED IN APPENDUM 2.



**5 DOCK EDGE DETAIL**  
 SCALE: 1/2" = 1'-0"



**1 WALL SECTION**  
 ALTERNATE #1  
 SCALE: 1/2" = 1'-0"

**2 WALL SECTION**  
 ALTERNATE #1  
 SCALE: 1/2" = 1'-0"

**3 WALL SECTION**  
 SCALE: 1/2" = 1'-0"

**4 WALL SECTION**  
 SCALE: 1/2" = 1'-0"

DRAWINGS ISSUED		
NO.	DATE	ITEM ISSUED
1	1/24	REVIEW
2	4/26	REVIEW
3	5/28	PLAN CHANGE
4	6/05	PLAN CHANGE
5	6/14	100% REVIEW
6	6/25	PLAN REVIEW
7	7/15	PLAN REVIEW REV. 1
8	8/22	ADDENDUM #2

COMPUTER DRAWING  
 BB\_AS02.dwg

DATE: JUNE, 2019  
 DRAWN BY: MH, BS, CH  
 CHECKED BY: MRH

SHEET  
**A5.2**  
 OF 1 SHEETS