

HANNEY & ASSOCIATES, ARCHITECTS
 1726 South Hillside, Wichita, Kansas, 67211
 Phone (316) 683-8965
 Fax (316) 684-1441
 www.haarchitects.com

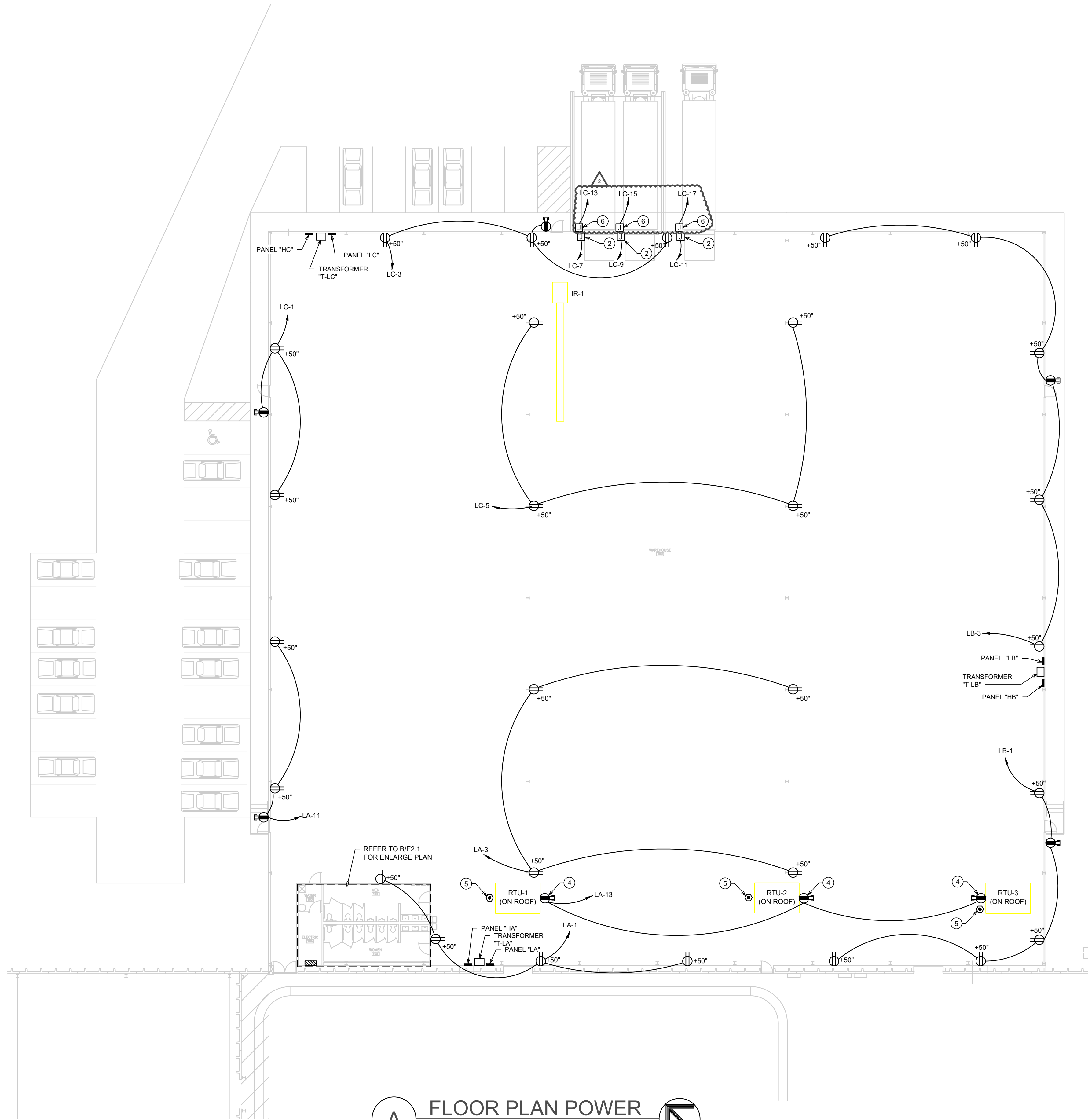
SPACE LEFT INTENTIONALLY BLANK

GENERAL NOTES:

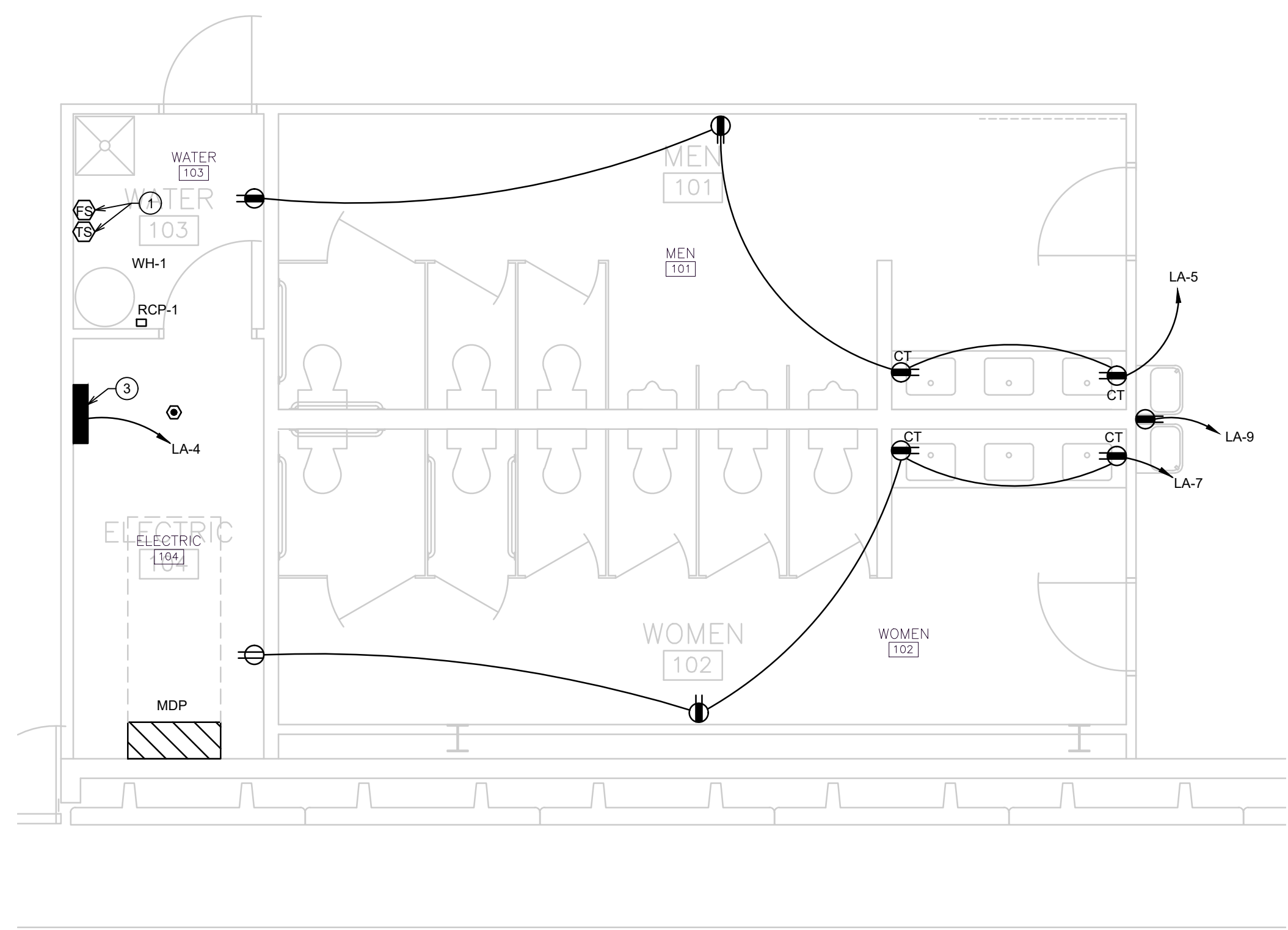
- ALL CIRCUITS INDICATED ON DRAWINGS SHALL BE 20A, 120V CIRCUITS WITH (2)-#12'S AND (1)-#12 G. IN 0.5" CONDUIT U.O.N.
- LABEL ALL SNAP SWITCH COVERPLATES WITH THE PANEL AND CIRCUIT NUMBER.
- REFER TO RELATED ARCHITECTURAL DRAWINGS FOR RELATED INFORMATION.
- WALL MOUNTING HEIGHTS TO CENTERLINE OF DEVICE UNLESS OTHERWISE NOTED.
- A GROUND CONDUCTOR SIZED PER N.E.C. ARTICLE 250 IS REQUIRED IN ALL POWER, RECEPTACLE, AND LIGHTING CIRCUITS. GROUND CONDUCTORS ARE NOT SHOWN ON DRAWINGS.

PLAN NOTES:

- PROVIDE TAMPER AND FLOW SWITCHES AS REQUIRED. CONNECT TO SPRINKLER MONITORING PANEL LOCATED IN ELECTRICAL ROOM 104.
- PROVIDE JUNCTION BOX FOR 120V POWER CONNECTION TO OVERHEAD DOOR. CONTRACTOR TO VERIFY ALL ELECTRICAL REQUIREMENTS WITH EQUIPMENT MANUFACTURER PRIOR TO INSTALL.
- PROVIDE 120V CONNECTION TO MONITORING SYSTEM. REFER TO SPECIFICATIONS FOR ADDITIONAL INFORMATION.
- MOUNT ON UNIT.
- PROVIDE A DUCT MOUNTED SMOKE DETECTOR IN THE RETURN AIR DUCT OF THE ROOF TOP UNIT. COORDINATE LOCATION AND REQUIREMENTS WITH EQUIPMENT MANUFACTURE AND MECHANICAL CONTRACTOR. CONNECT TO MONITORING PANEL LOCATED IN ELECTRICAL ROOM 104.
- PROVIDE JUNCTION BOX FOR 120V POWER CONNECTION TO DOCK LEVELER. CONTRACTOR TO COORDINATE ALL ELECTRICAL REQUIREMENTS WITH EQUIPMENT PROVIDER PRIOR TO ROUGH-IN.



A FLOOR PLAN POWER
 SCALE: 1/16" = 1'-0"
 0 8' 16' 32'
 SCALE: 1/16" = 1'-0"
 NORTH



B FLOOR PLAN POWER
 SCALE: 1/4" = 1'-0"
 0 2' 4' 8'
 SCALE: 1/4" = 1'-0"
 NORTH

2019 BOOT BARN WAREHOUSE EXPANSION
 4950 South Laura, Wichita, Kansas 67218

DRAWINGS ISSUED		
NO.	DATE	ITEM ISSUED
1	1/24	REVIEW
2	4/26	REVIEW
3	5/26	PLAN CHANGE
4	6/05	PLAN CHANGE
4	6/14	100% REVIEW
5	6/17	PLAN REVIEW
4	8/22	ADDENDUM #2

COMPUTER DRAWING

DATE: JUNE 17, 2019
 DRAWN BY: MH CHECKED BY: DR

SHEET
E2.1
 OF 1 SHEETS

