

8/22/19

HANNEY & ASSOCIATES, ARCHITECTS
1726 South Hillside, Wichita, Kansas, 67211
Phone (316) 683-8965
Fax (316) 684-1441
www.haarchitects.com

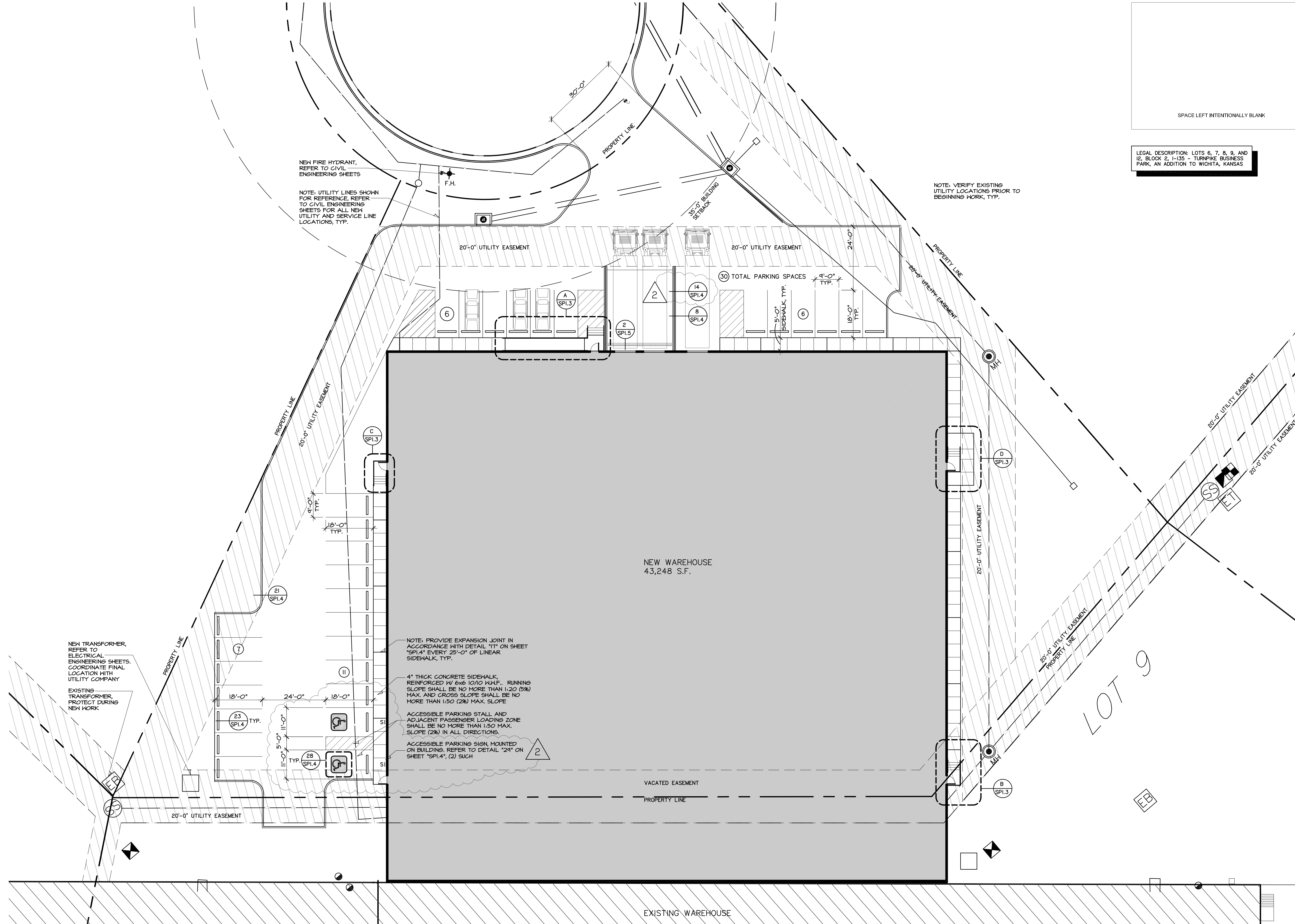
SPACE LEFT INTENTIONALLY BLANK

LEGAL DESCRIPTION: LOTS 6, 7, 8, 9, AND 12, BLOCK 2, 1-135 - TURNPIKE BUSINESS PARK, AN ADDITION TO WICHITA, KANSAS

NOTE: VERIFY EXISTING UTILITY LOCATIONS PRIOR TO BEGINNING WORK, TYP.

NEW FIRE HYDRANT, REFER TO CIVIL ENGINEERING SHEETS
NOTE: UTILITY LINES SHOWN FOR REFERENCE, REFER TO CIVIL ENGINEERING SHEETS FOR ALL NEW UTILITY AND SERVICE LINE LOCATIONS, TYP.

NEW TRANSFORMER, REFER TO ELECTRICAL ENGINEERING SHEETS. COORDINATE FINAL LOCATION WITH UTILITY COMPANY
EXISTING TRANSFORMER, PROTECT DURING NEW WORK



2019 BOOT BARN WAREHOUSE EXPANSION

4950 South Laura, Wichita, Kansas 67216

DRAWINGS ISSUED		
NO.	DATE	ITEM ISSUED
4	8/22	ADDENDUM #2
8	8/13	PLAN REVIEW REV. 2
7	7/15	PLAN REVIEW REV. 1
6	6/25	PLAN REVIEW
5	6/14	100% REVIEW
4	6/05	PLAN CHANGE
3	5/28	PLAN CHANGE
2	4/26	REVIEW
1	1/24	REVIEW

COMPUTER DRAWING
BB_SP102.dwg

DATE: JUNE, 2019
DRAWN BY: M.H., B.S., C.H.
CHECKED BY: M.R.H.

SHEET

SP1.2

OF 1 SHEETS

A ENLARGED SITE PLAN
SCALE: 1/16" = 1'-0"
NORTH

